

Paupong: A New Gold– Silver –Copper Field in the SE Lachlan

Russell Fountain

Alt Resources Ltd

Mines & Wines 2015

September 4th 2015

www.altresources.com.au

Disclaimer

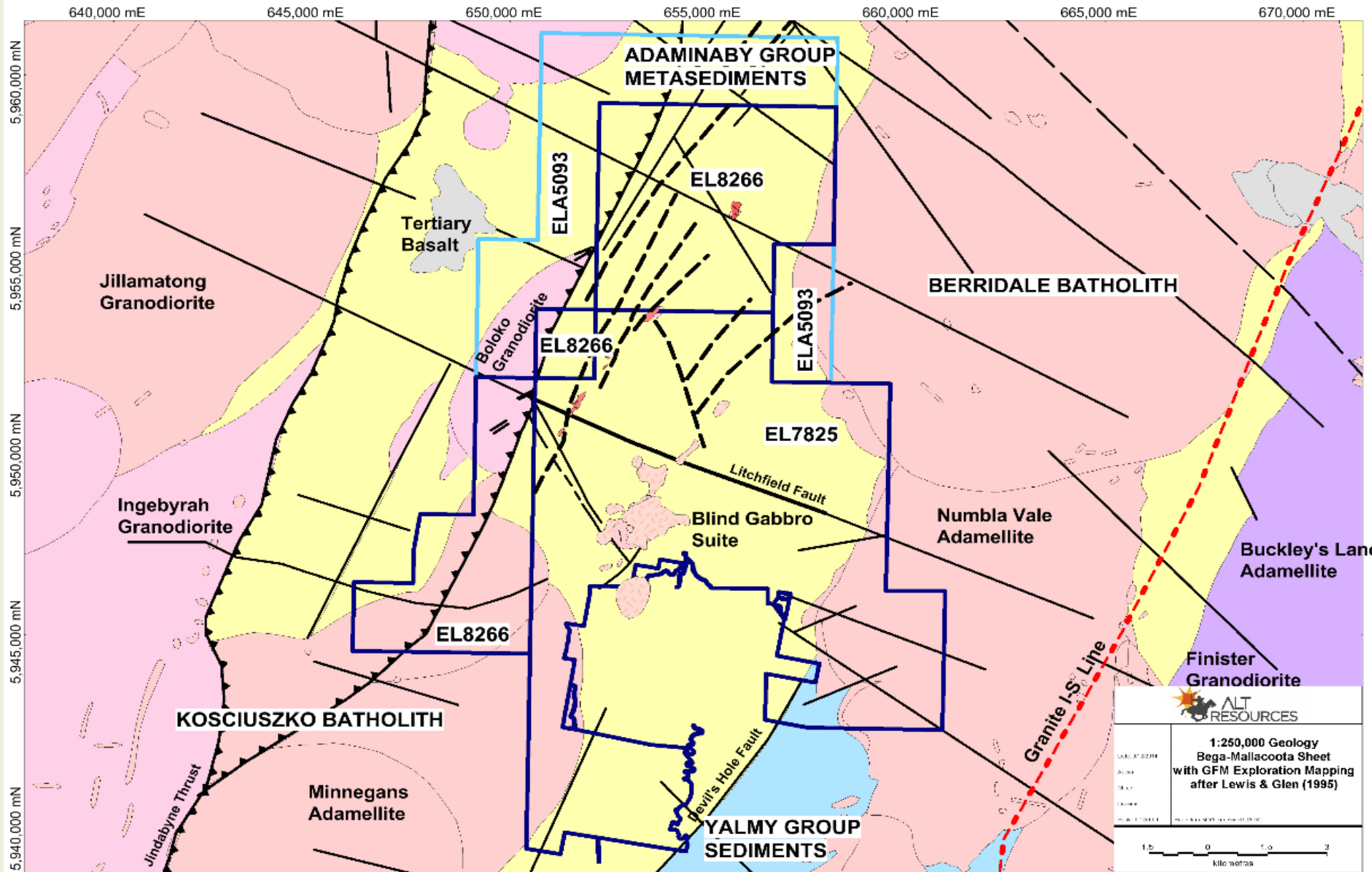
The information in this presentation that relates to exploration results is based on information compiled by or under the supervision of Dr. Russell Fountain, who is a Fellow of The Australian Institute of Geoscientists and a Director of Alt. Dr. Fountain has sufficient experience which is relevant to the style of mineralisation and type of deposit under consideration and the activity he is undertaking to qualify as a Competent Person as defined in the 2012 Edition of the “Australasian Code for Reporting of Exploration Results, Mineral Resources and Ore Reserves”. Dr. Fountain consents to the inclusion of the matters based on his information in the form and context in which it appears.

This presentation is based on information available to it at the time of preparation. No representation or warranty, express or implied, is made as to the fairness, accuracy or completeness of the information, opinions and conclusions contained herein. To the maximum extent permitted by law, Alt, its related bodies corporate (as that term is defined in the *Corporations Act 2001 (Cth)*) and the officers, directors, employees, advisers and agents of those entities do not accept any responsibility or liability including, without limitation, any liability arising from fault or negligence on the part of any person, for any loss arising from the use of the Presentation Materials or its contents or otherwise arising in connection with it.

Acknowledgements

- **James Anderson, who made the whole thing happen from scratch**
- **Tom Klein, Dr Jane Barron Dr Helen Degeling who have all made major contributions to the Project.**
- **NSW Department Trade and Industry Resources and Energy (NSW DTIRE)-Through JV Partner GFM the Paupong Project awarded max \$200,000 drilling grant from the New Frontiers drilling initiative**

Paupong Geological Setting



Discovery

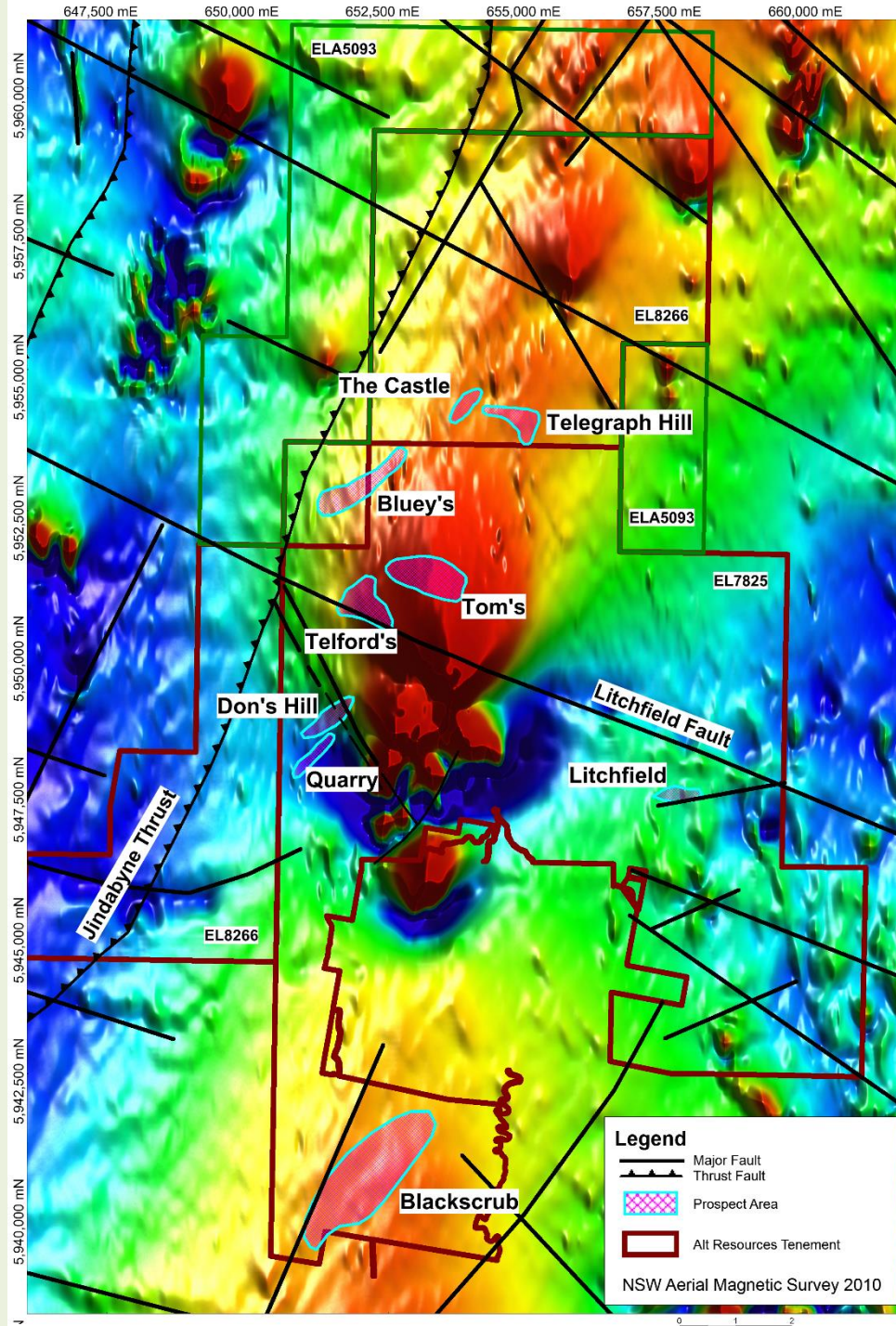
- **Old Erosion Surface, Deep Weathering, Little Outcrop**
- **Gold too fine to pan**
- **Neglected small sliver of Ordovician sediments in largely granitic terrain**
- **Prior stream geochemical surveys by Epoch and BHP prior to 1972 detected anomalies, but not followed up**
- **Discovery through follow-up on 1898 SMH article on Litchfield vein.**



Toms Vein Outcrop Paupong

Work To Date

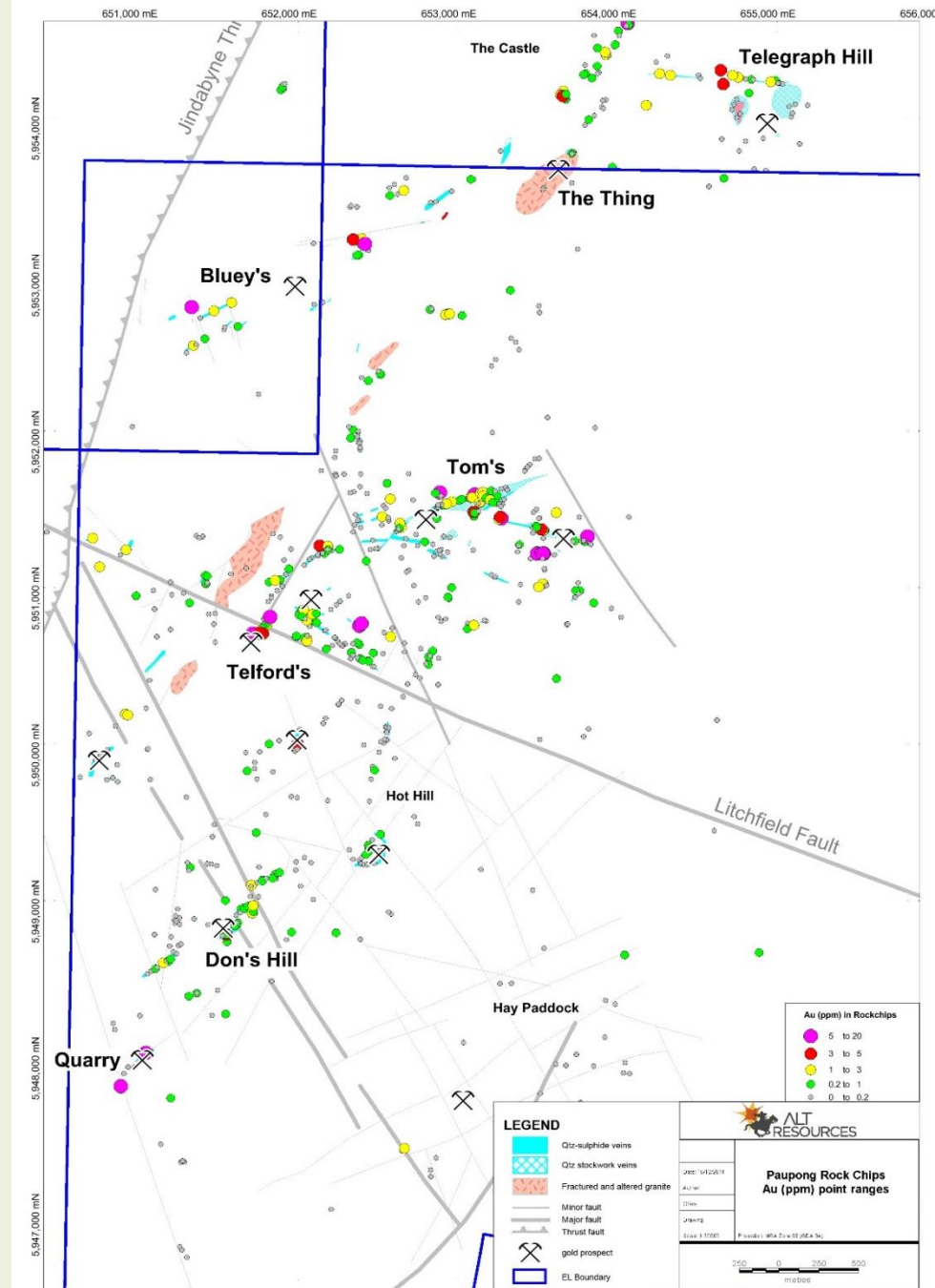
- Systematic surface prospecting, selective vein sampling
- Detailed geological mapping-
- Re-Processing of Government Magnetics
- Resistivity, gradient array and dipole-dipole IP surveys
- 80 line km detailed Gradient Array IP
- 21 drill holes (2050m RC, 600m DD)



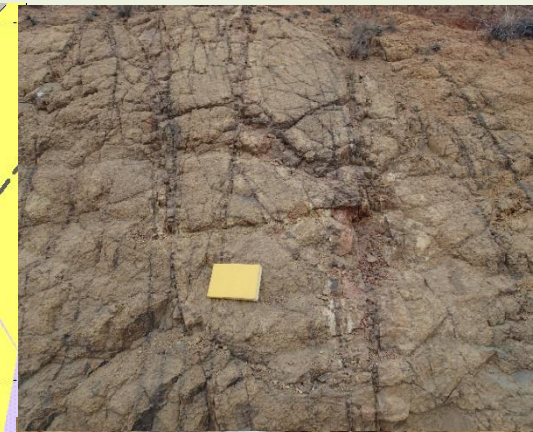
Vein Geochemistry

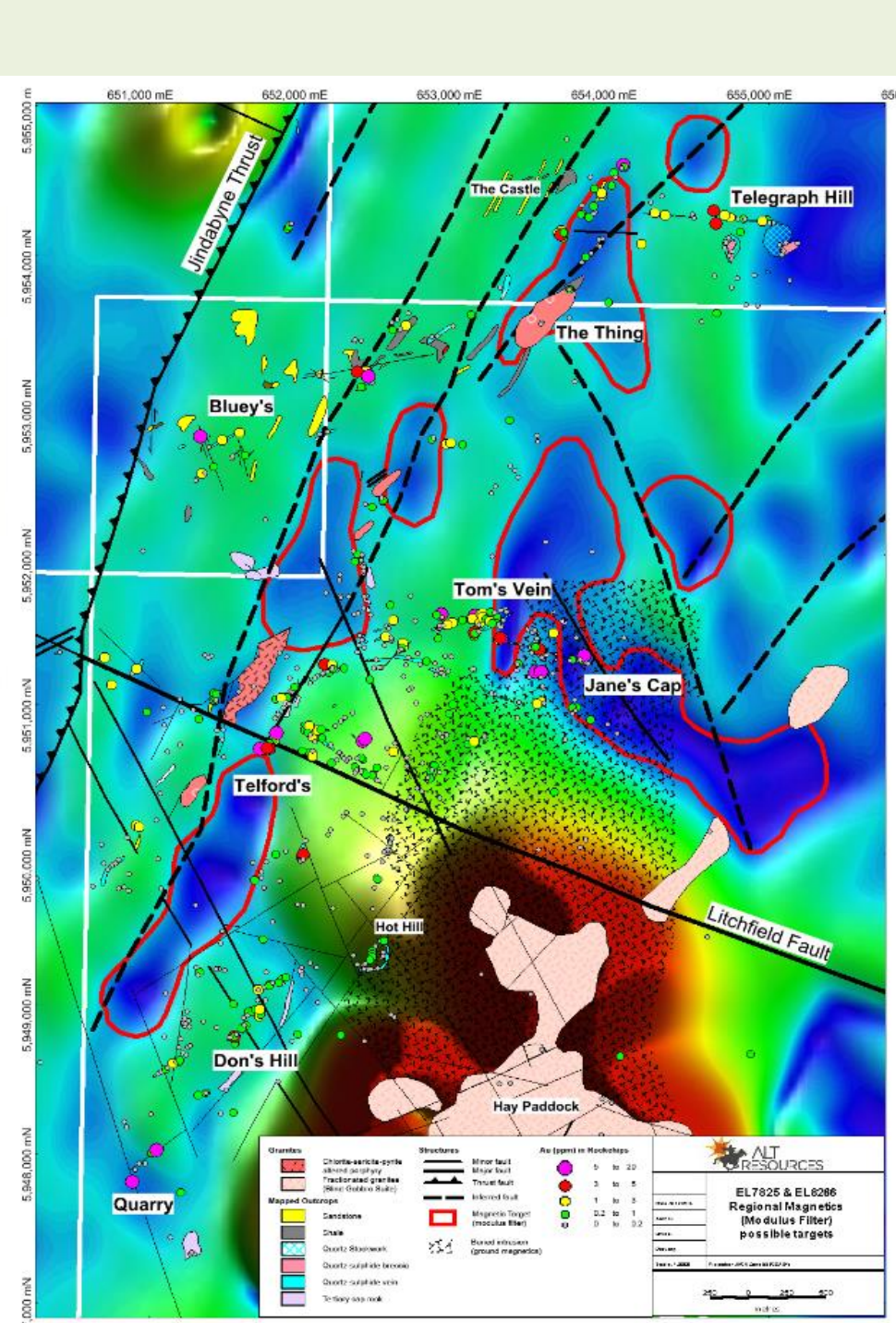
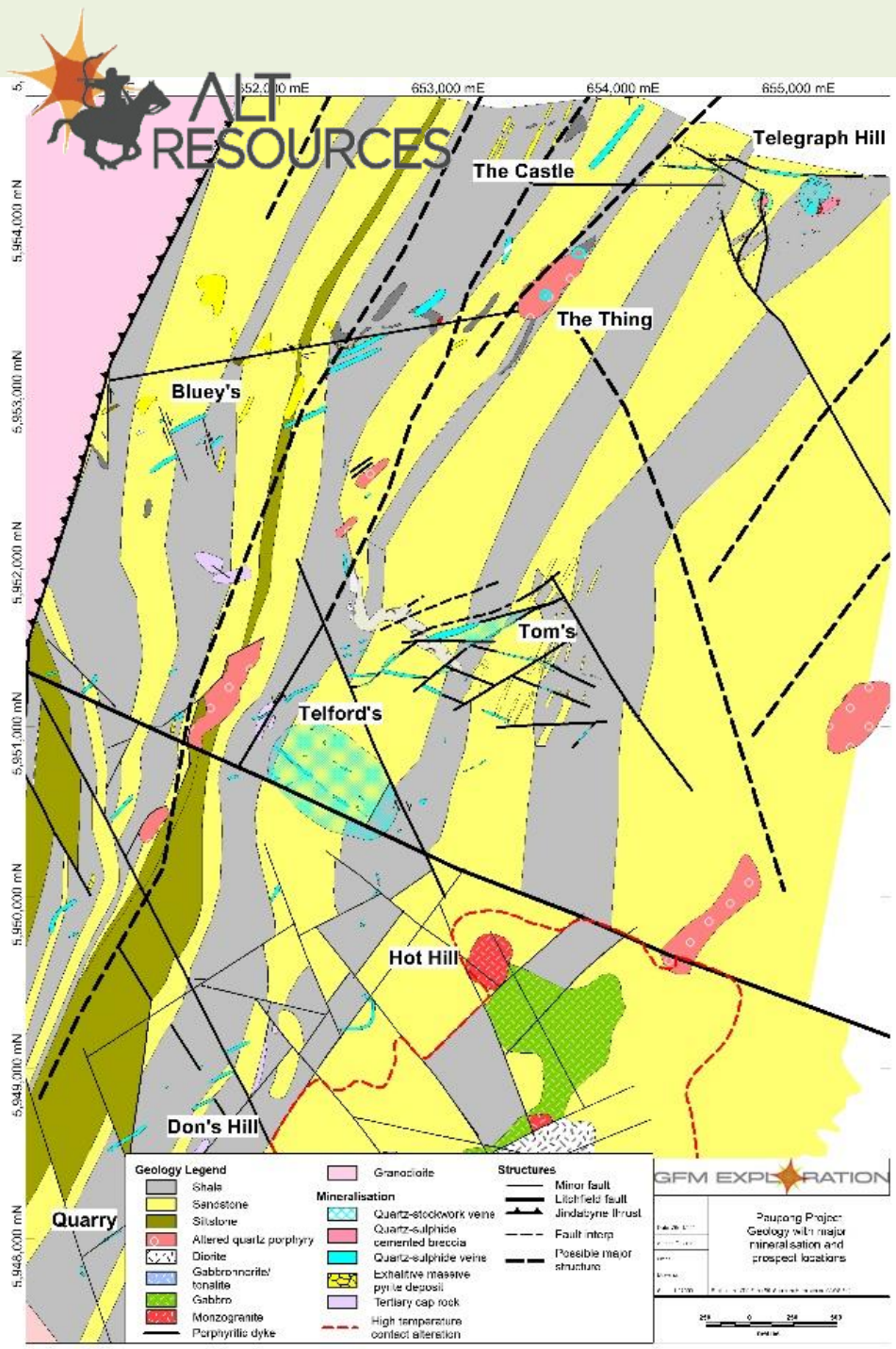
Element	Count	Min	Max	Mean	90 th Percentile
Au ppm	972	0.005	14.05	0.40	0.91
Ag ppm	972	0.1	190	2.6	4.3
As ppm	972	2	80000	3542	8288
Bi ppm	972	1	7380	139	218
Cu ppm	972	1	4910	190	421
Mo ppm	972	0.5	257	11	24
Pb ppm	972	1	70110	536	414
Zn ppm	972	1	839	63	194

- Targets located to date include:
 - Major brecciated gossanous quartz veins and sheeted vein sets (Toms, Jims, Dons, Bluey's)
 - Stockworks and breccias (Telfords, Telegraph)
- Outstanding Au-Ag assays from surface vein sampling

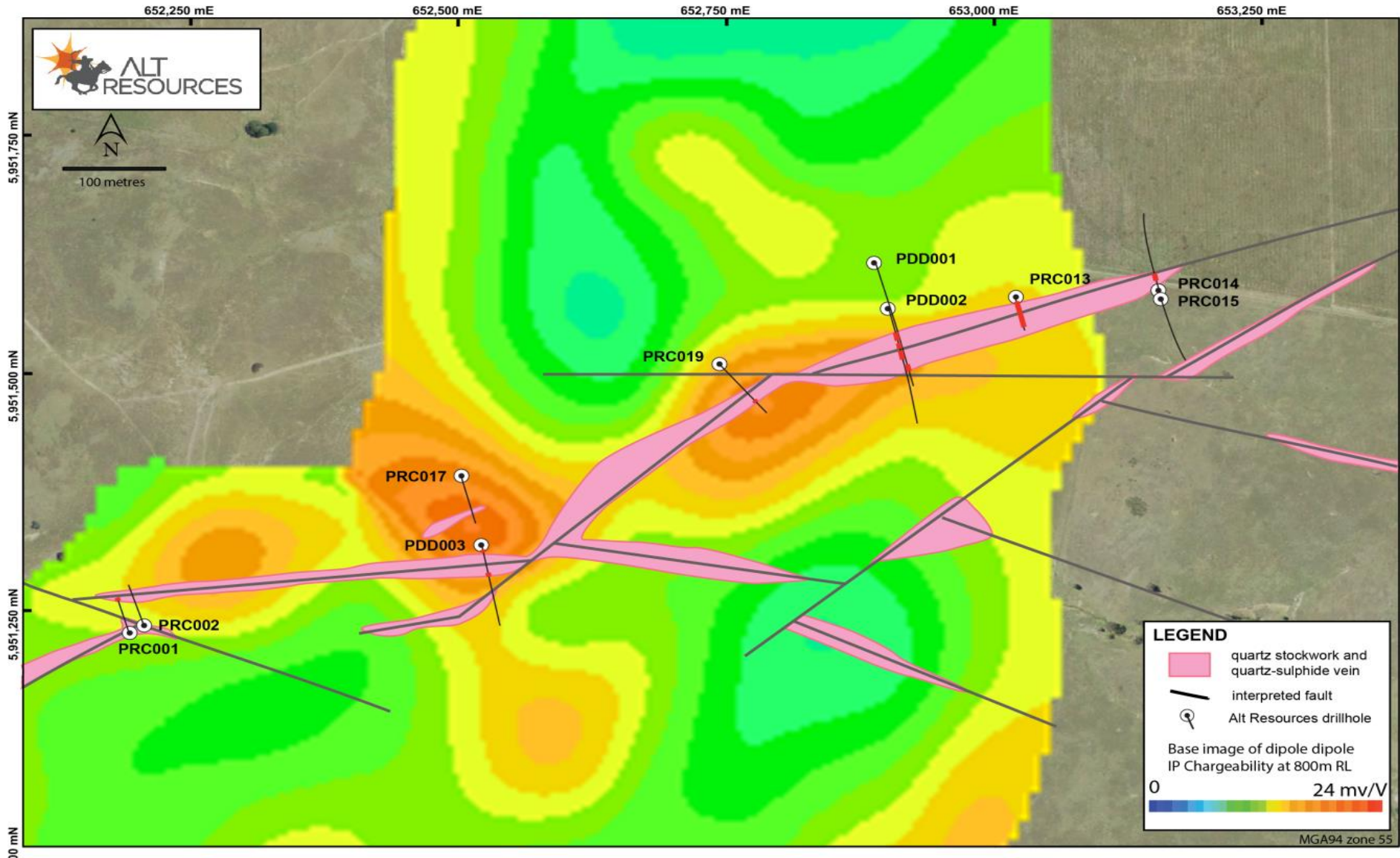


Multiple Small Intrusives

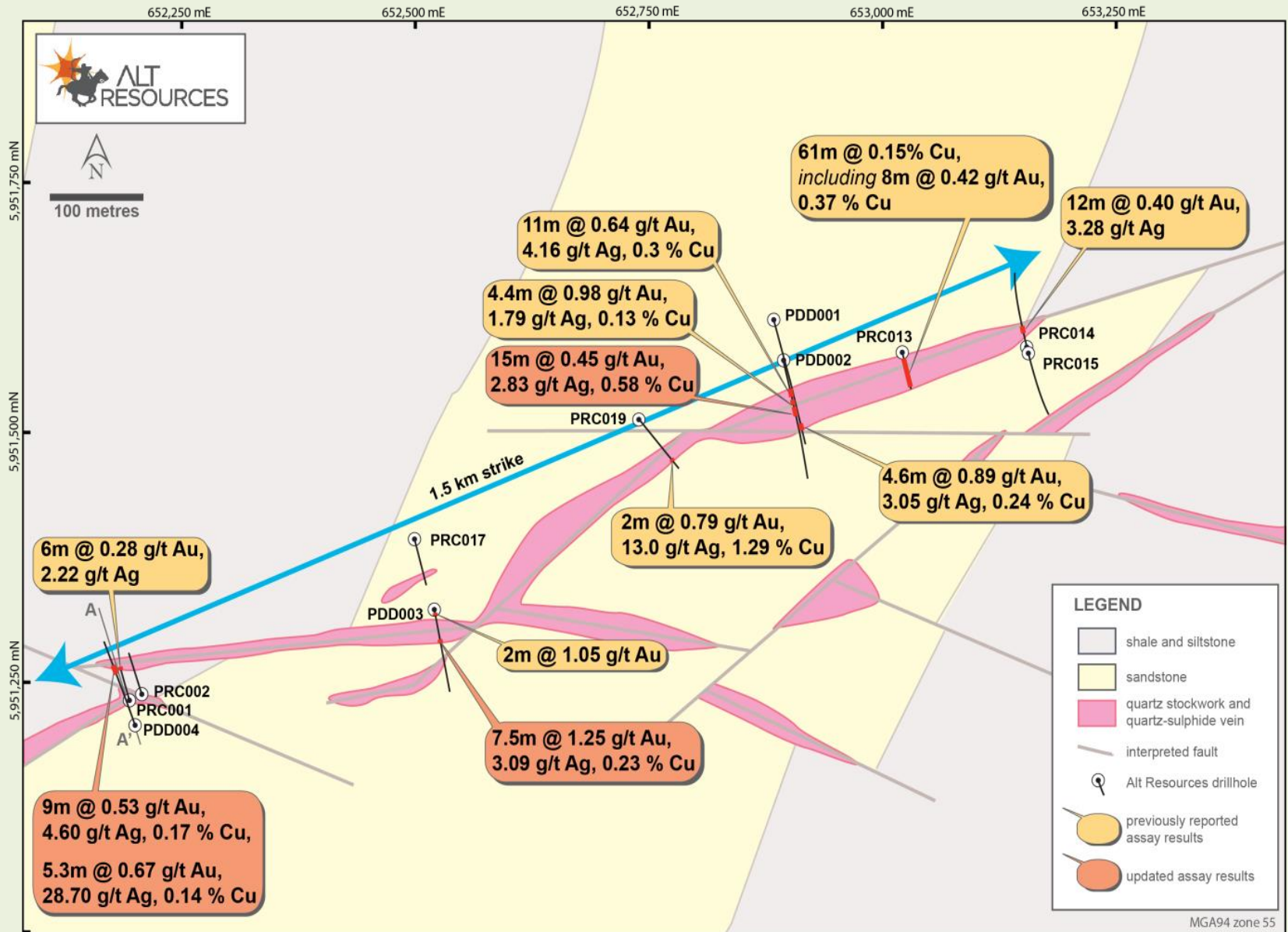


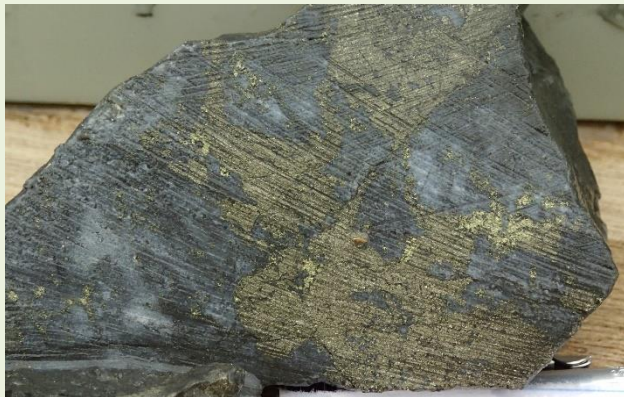
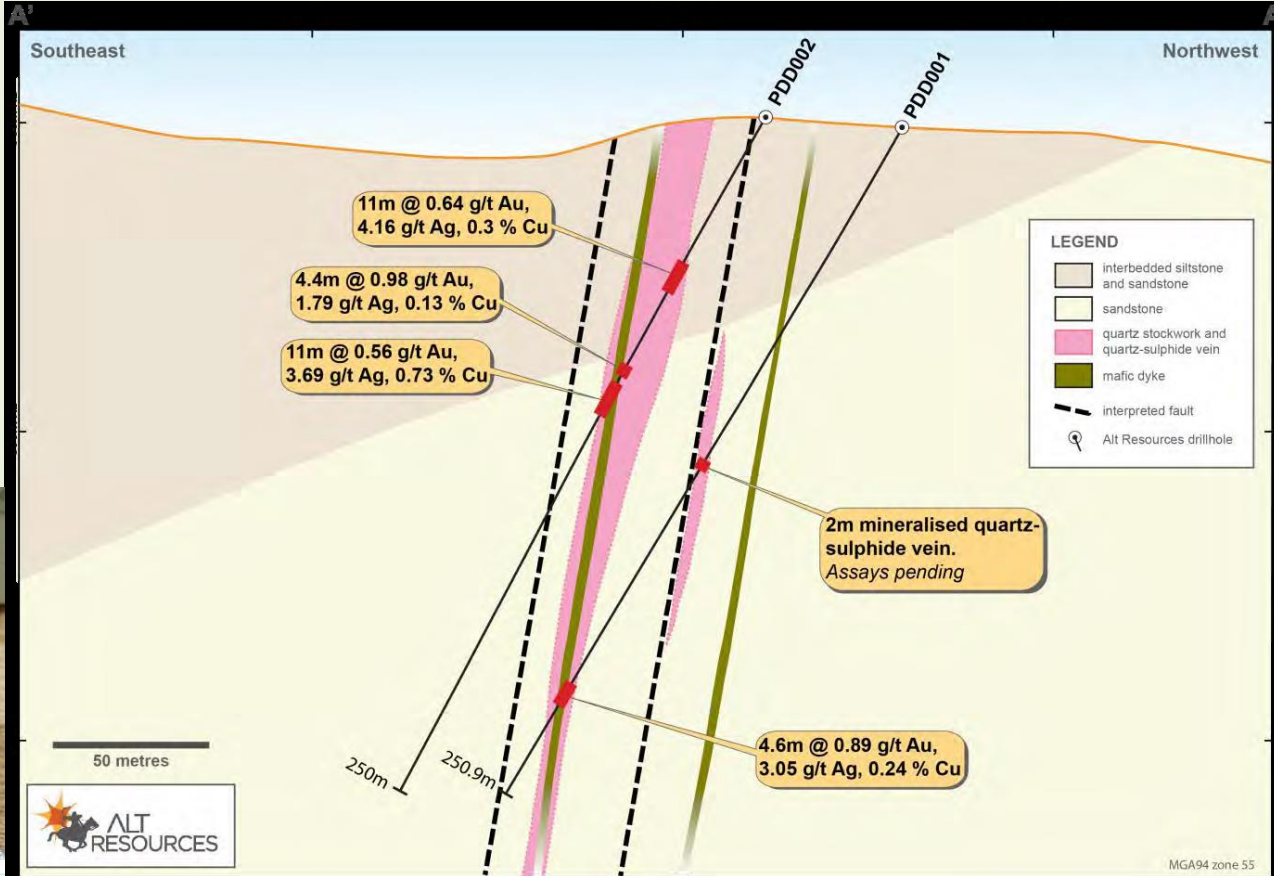


Tom's Vein IP

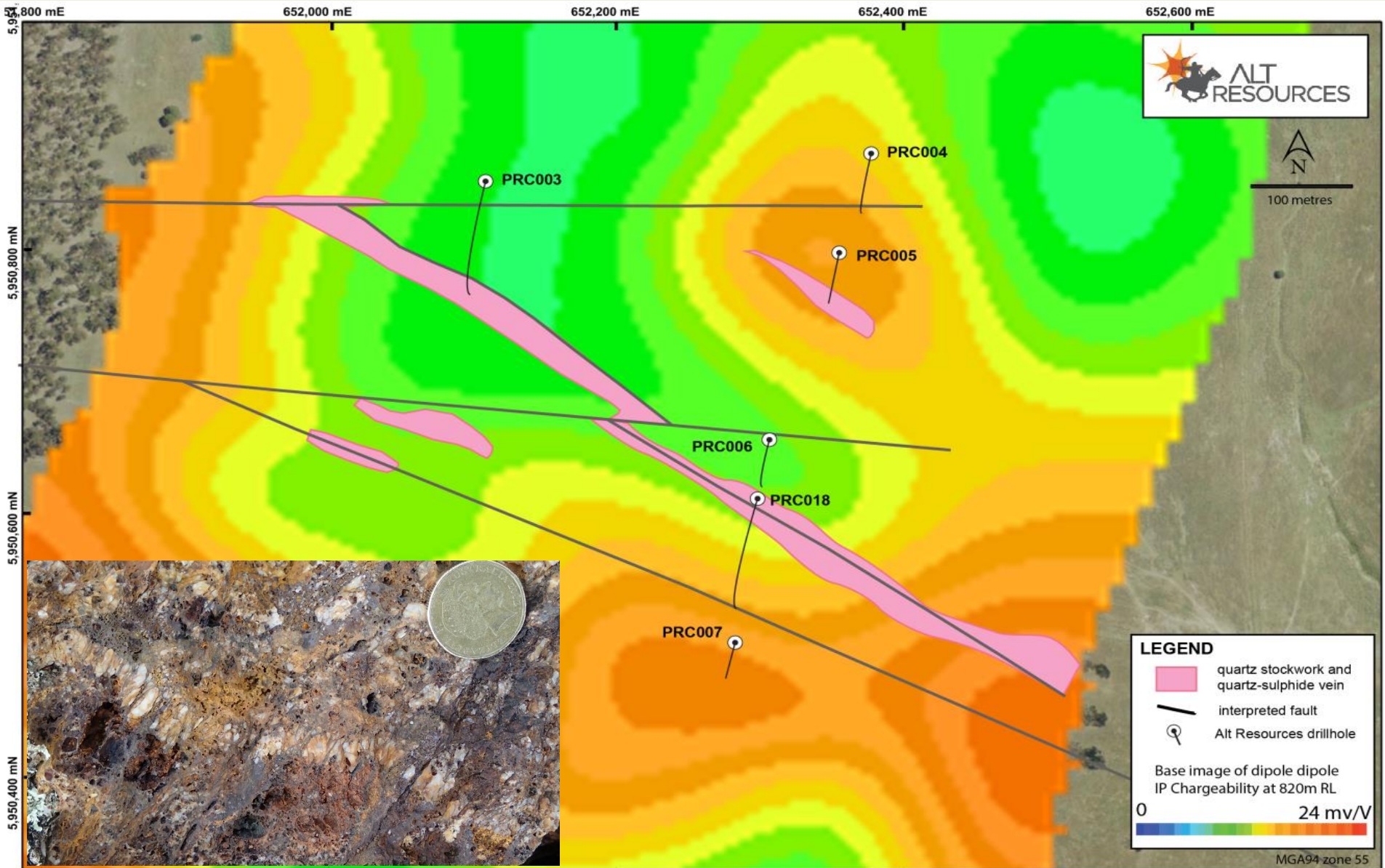


Tom's Vein Drill Results

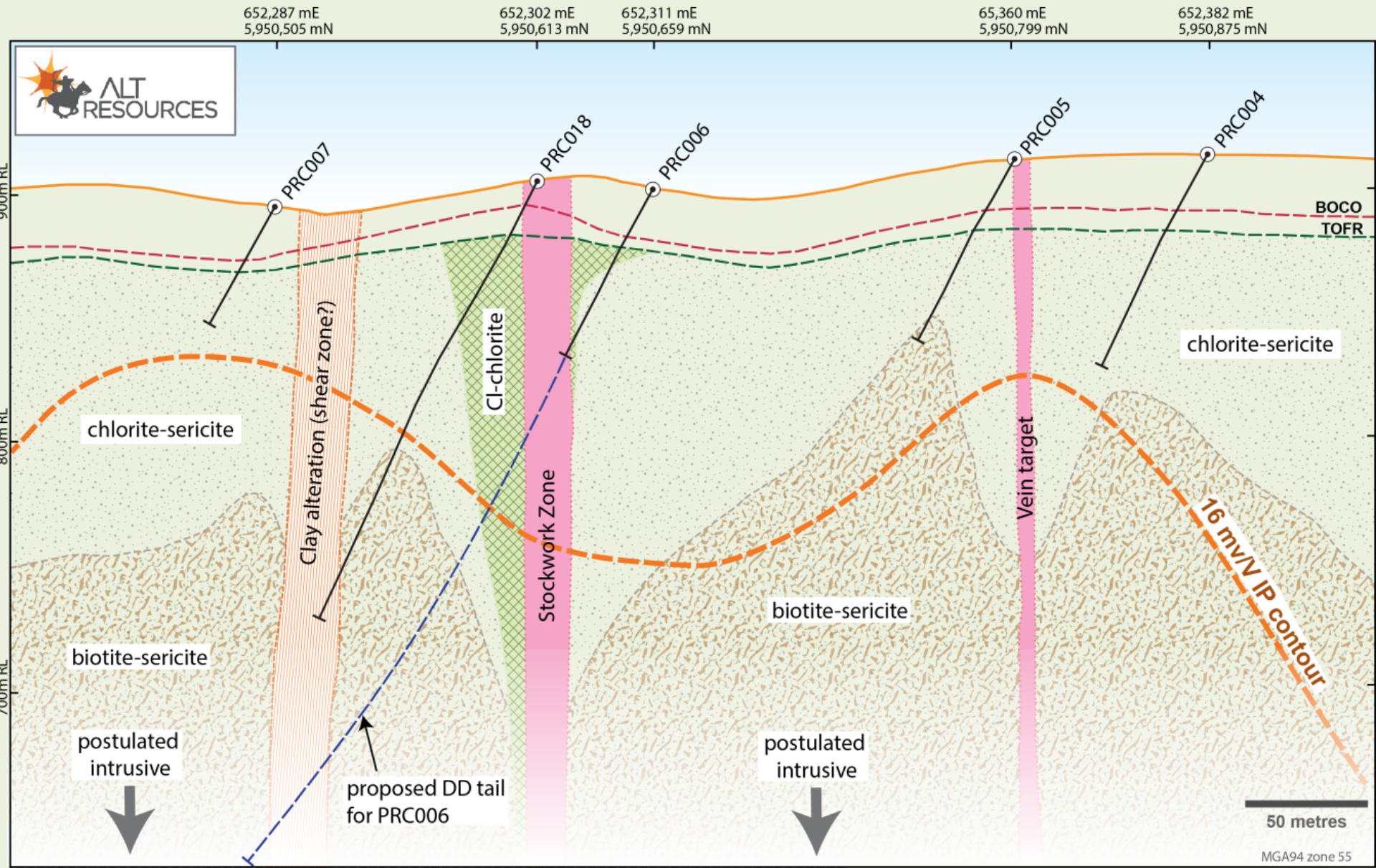




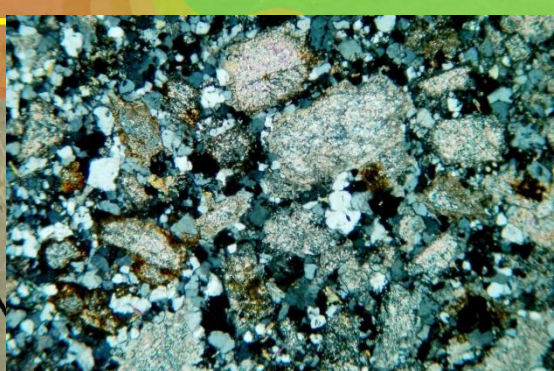
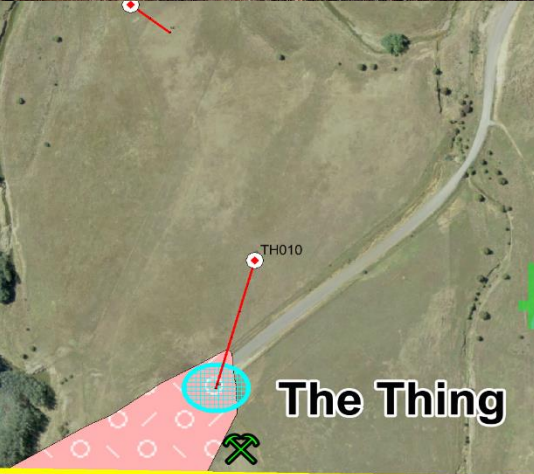
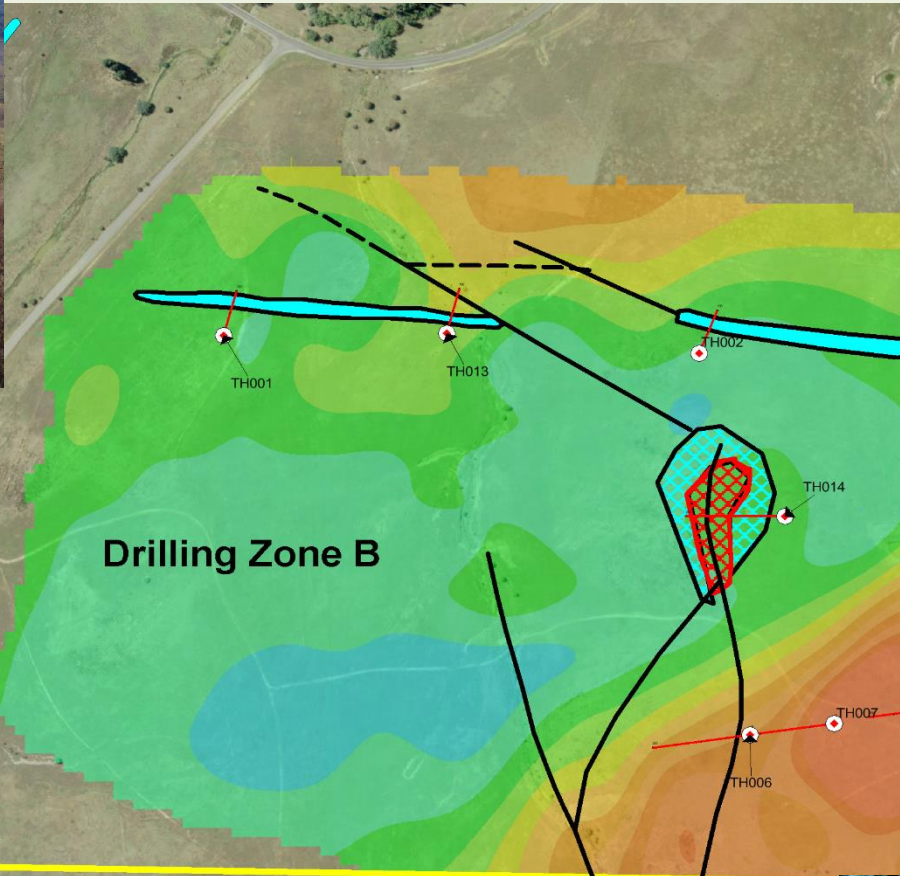
Telfords



Telford's Interpretation



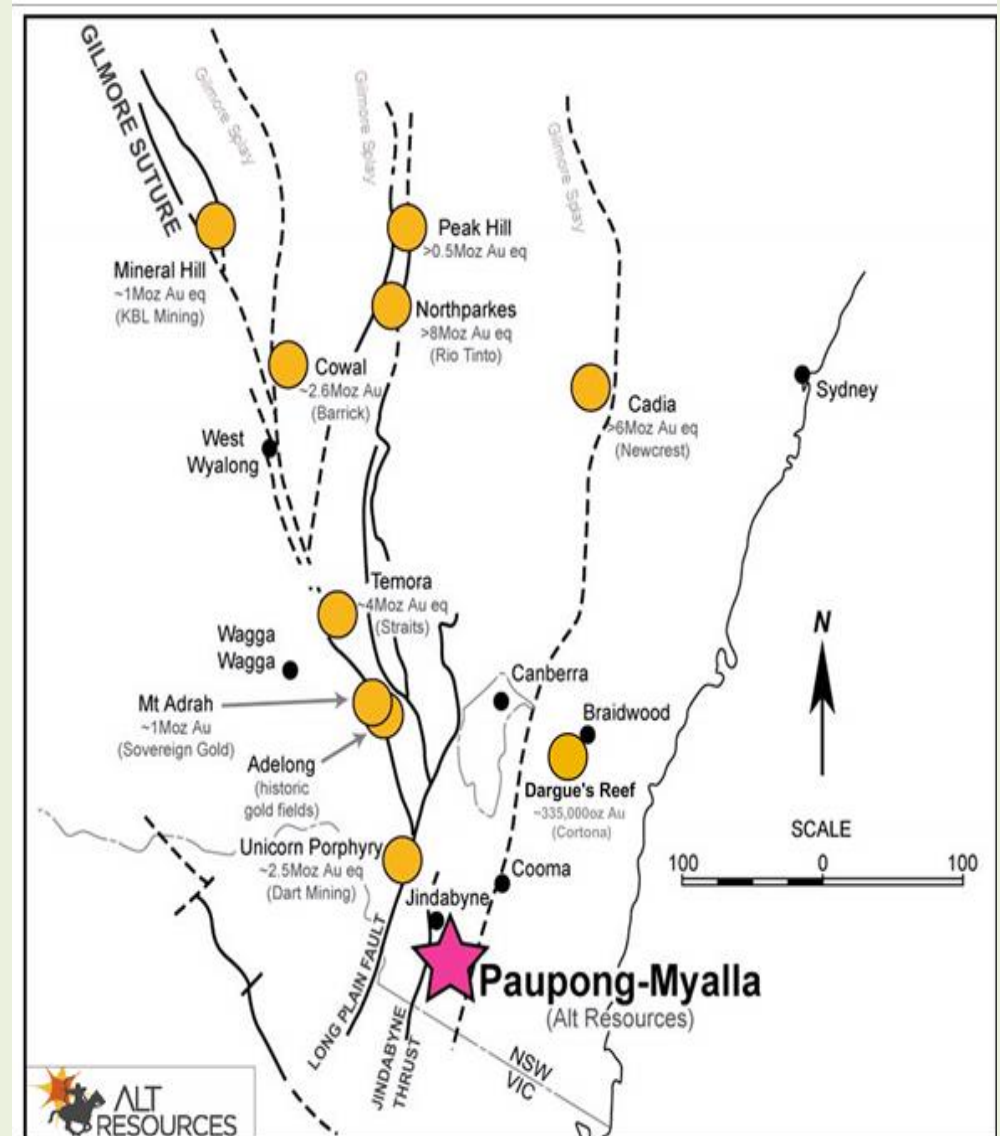
Telegraph Hill Prospect



Paupong Exploration Targets

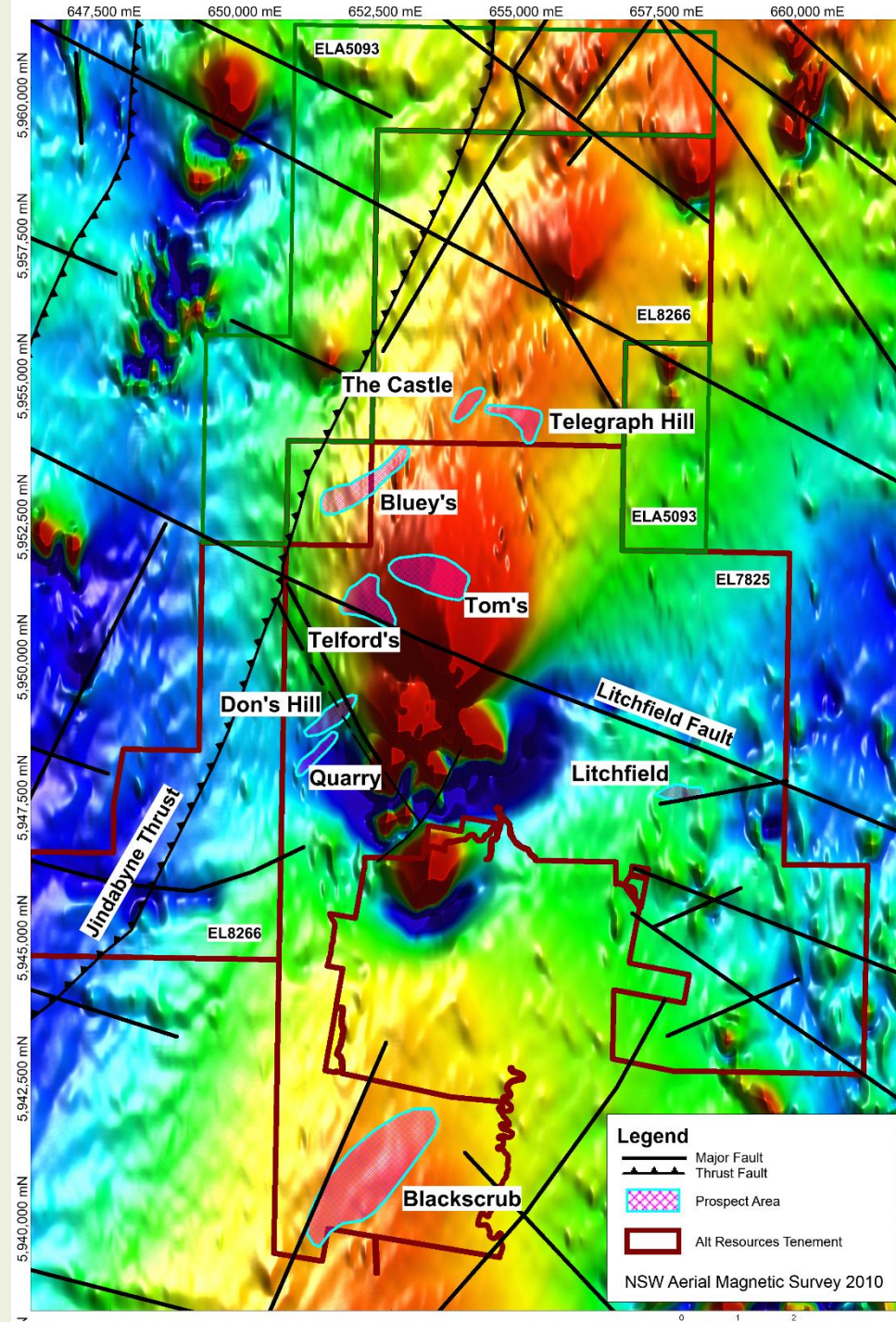
Widespread Au-Ag-Cu mineralization at Paupong is associated with strongly anomalous As, Bi, Co, and Mo, and a cluster of high level intrusives with a wide range of textures and compositions. We consider the prospect is highly prospective for:

- High grade vein hosted gold-silver (base metal) mineralization;
- Porphyry related bulk gold or gold-copper mineralisation.



Planned Work

- Complete 1st pass drilling of known targets, and deeper drill test at Tom's and Telford's
- Detailed aeromag/radiometric survey (4,000 line km, 50m line spacing)
- Ongoing IP surveys
- BLEG sampling to screen remainder of leases
- Ongoing mapping, prospecting, vein and soil sampling to define limits of the whole system.



Thank You

