

CENTRAL VICTORIA PROJECT

Discovery of mineralisation below
Murray Basin cover at Lockington

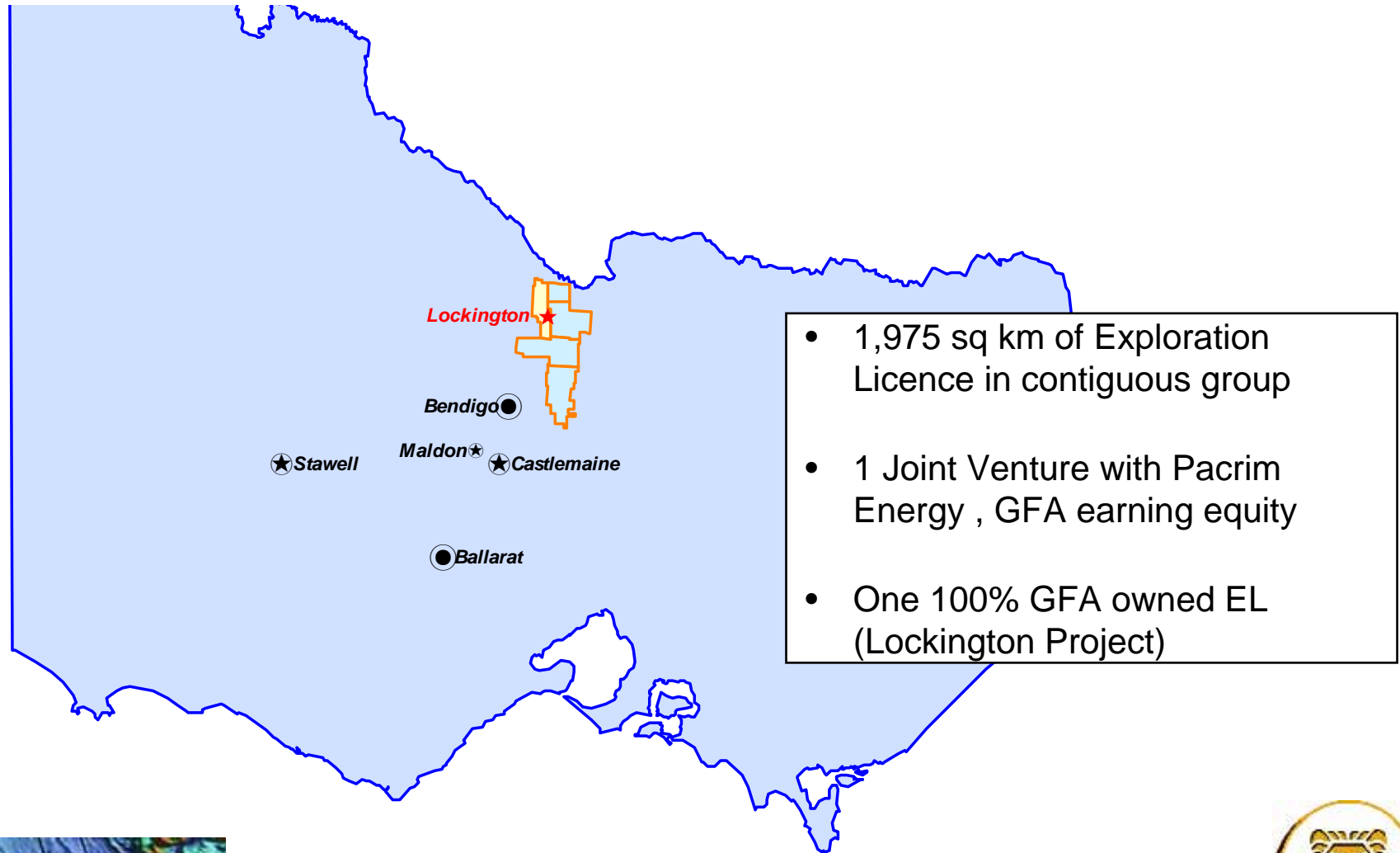


Exploration Management Services Pty Ltd

Gold Fields Australasia Pty Ltd



CENTRAL VICTORIA PROJECT



- 1,975 sq km of Exploration Licence in contiguous group
- 1 Joint Venture with Pacrim Energy , GFA earning equity
- One 100% GFA owned EL (Lockington Project)



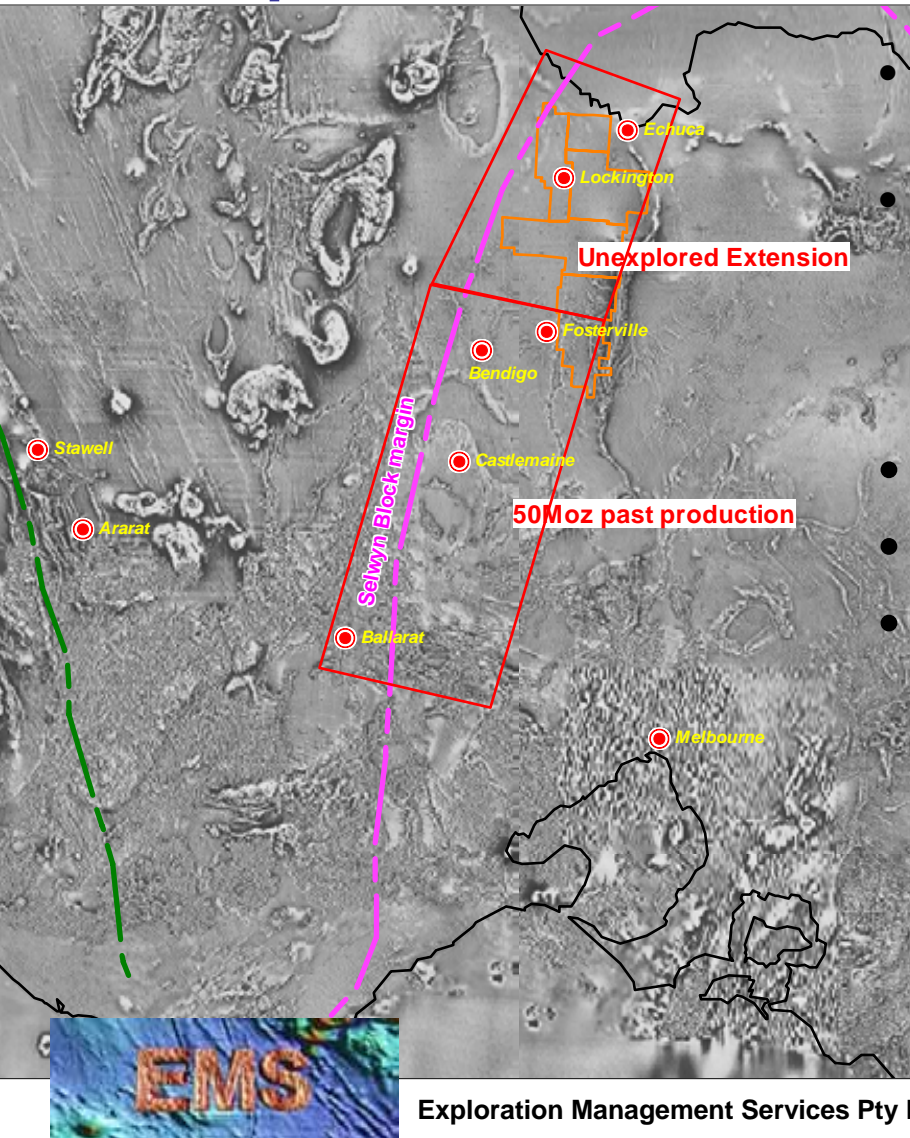
Exploration Management Services Pty Ltd

Gold Fields Australasia Pty Ltd



CENTRAL VICTORIA PROJECT

Exploration Rationale



Exploration Management Services Pty Ltd

- Standout emerging gold producing area in Australia (~1Mozpa by 2011).

- Bendigo Zone:

- Au/km² 2nd only to the Witwatersrand.
- 30Moz GSV Endowment estimate (undercover).

- ~2000km² exploration tenements.

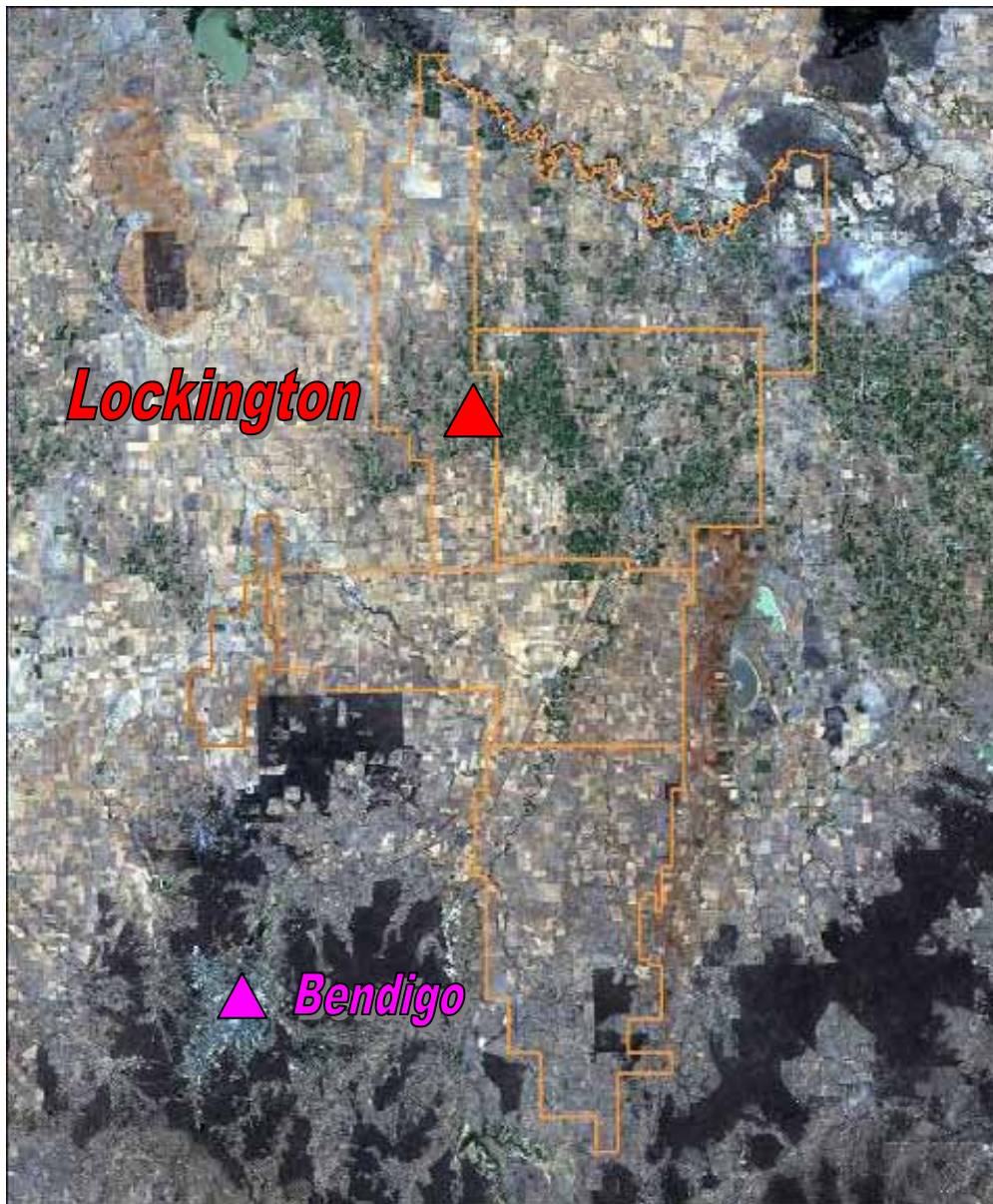
- GFA 100% & JV earning 75%.

- Rationale:

- Ballarat – Bendigo corridor
- Parallel magmatic intrusive trend
- Proximal Selwyn Block Margin

Gold Fields Australasia Pty Ltd





Exploration area over mostly private land, varying in size from

1,000s of Hectares (cereal crops) to

10s of Hectares (dairy & hobby farms)

The only accessible Crown Land is represented by Roadside Reserves.

Roads form a natural 1.5 x 3 km grid for first pass work



Exploration Management Services Pty Ltd

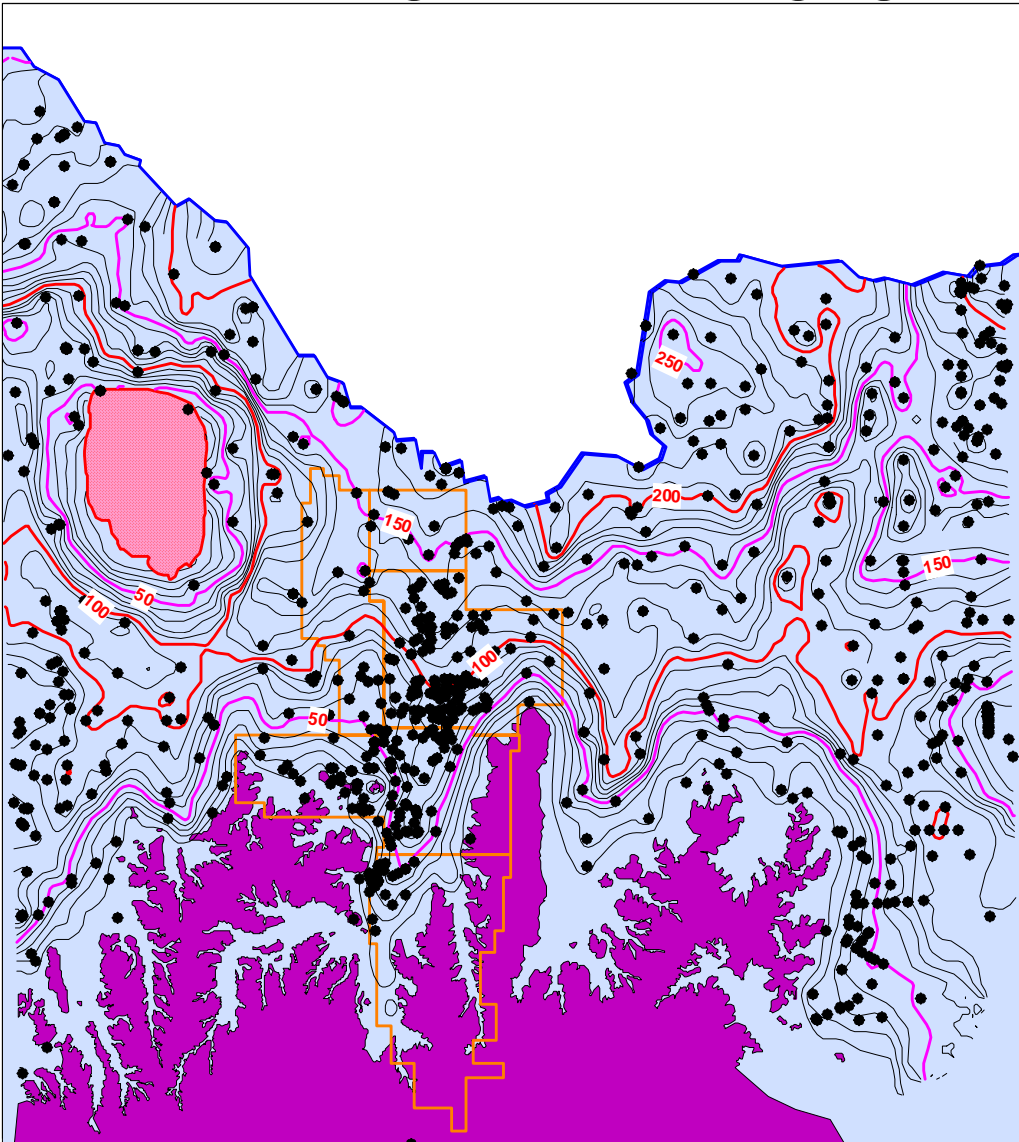
Gold Fields Australasia Pty Ltd



CENTRAL VICTORIA PROJECT

Depth to Basement

- Preliminary to planning
- Nominal 100 metre depth limit
- Used data from existing bore-hole database to generate basement DTM and contours



Exploration Management Services Pty Ltd

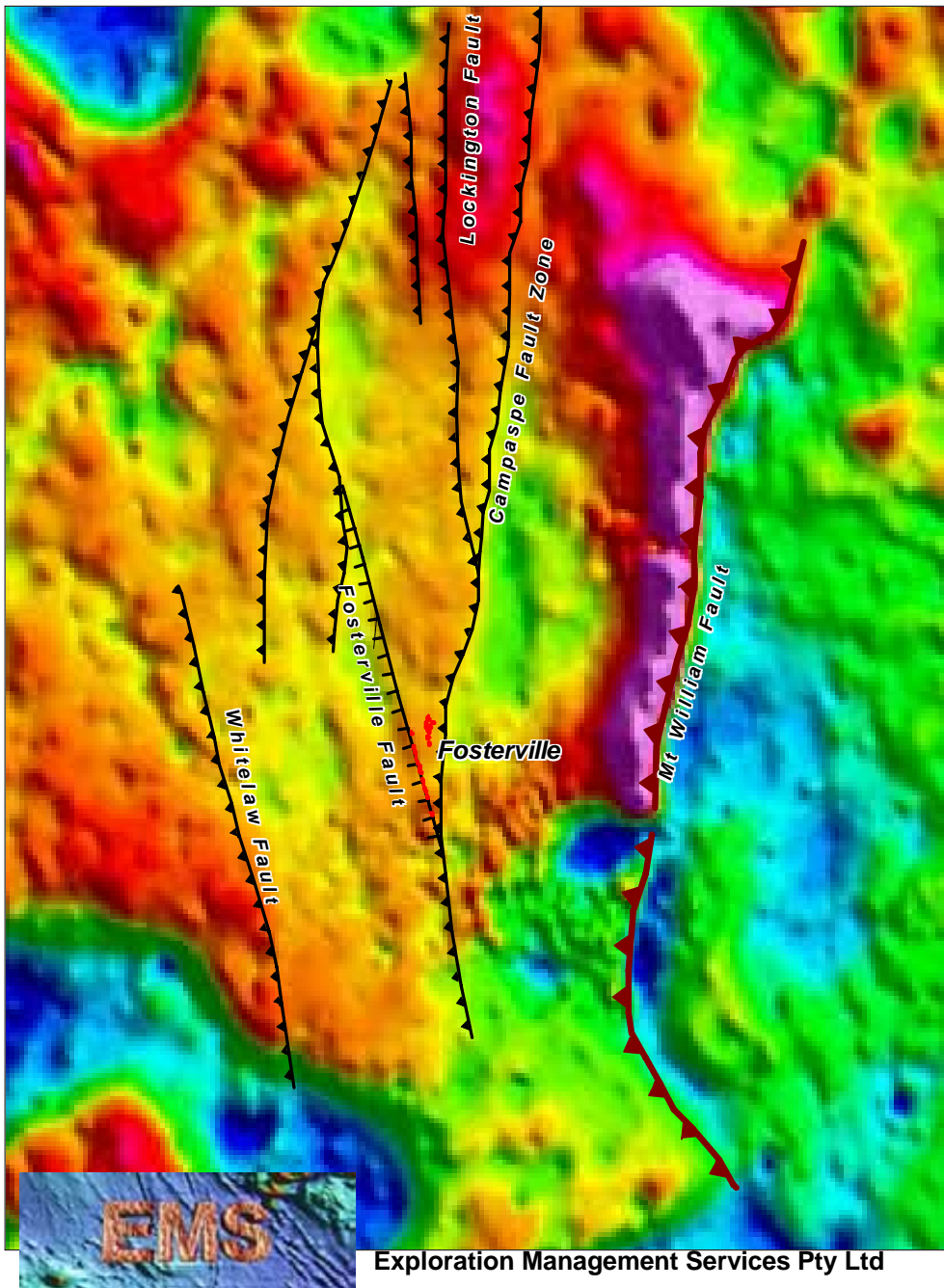
Gold Fields Australasia Pty Ltd

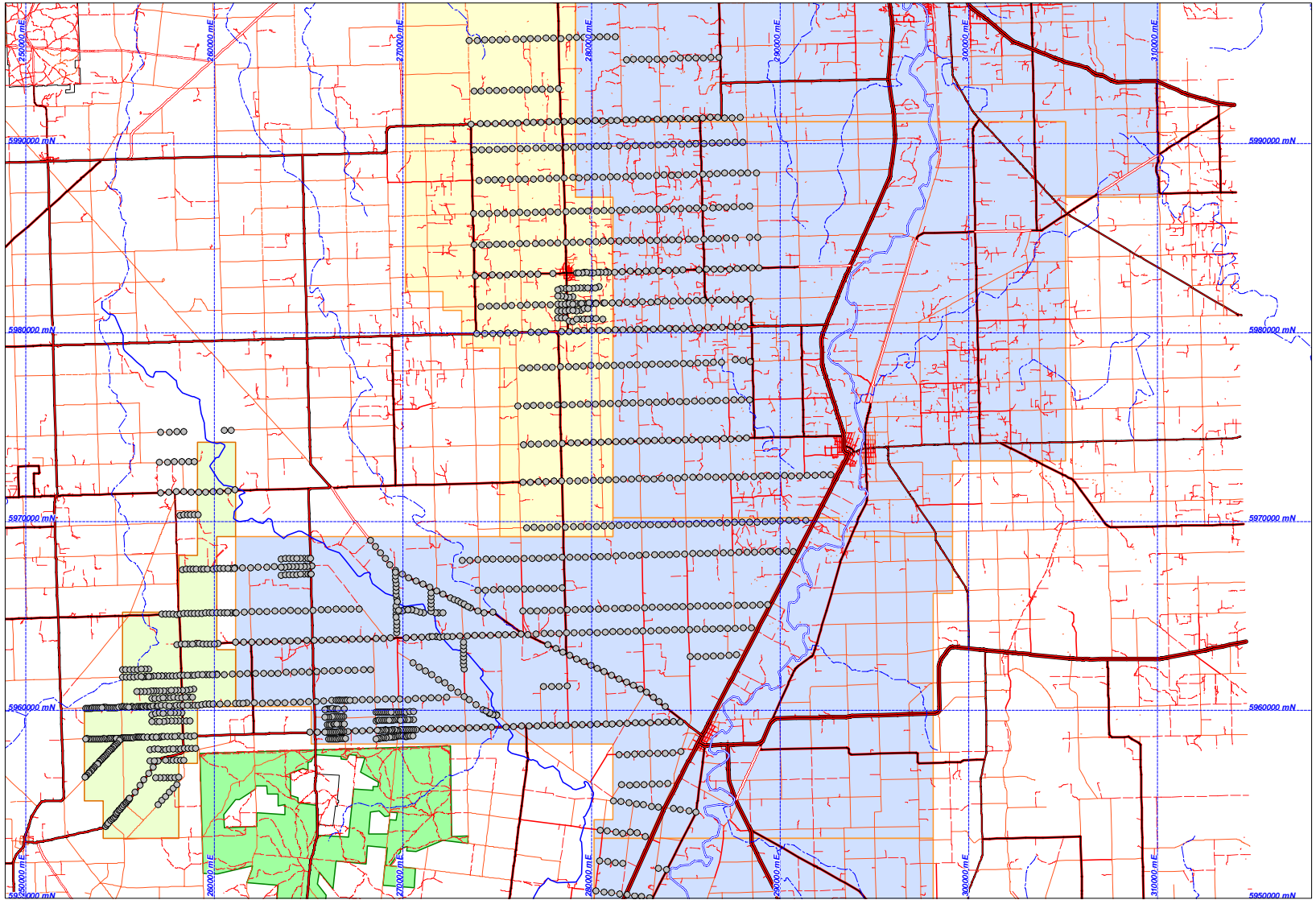


CENTRAL VICTORIA PROJECT

GEOPHYSICS

- Aeromagnetics
 - limited usefulness
- Gravity Data
 - More useful, with abundance of structural trends interpreted





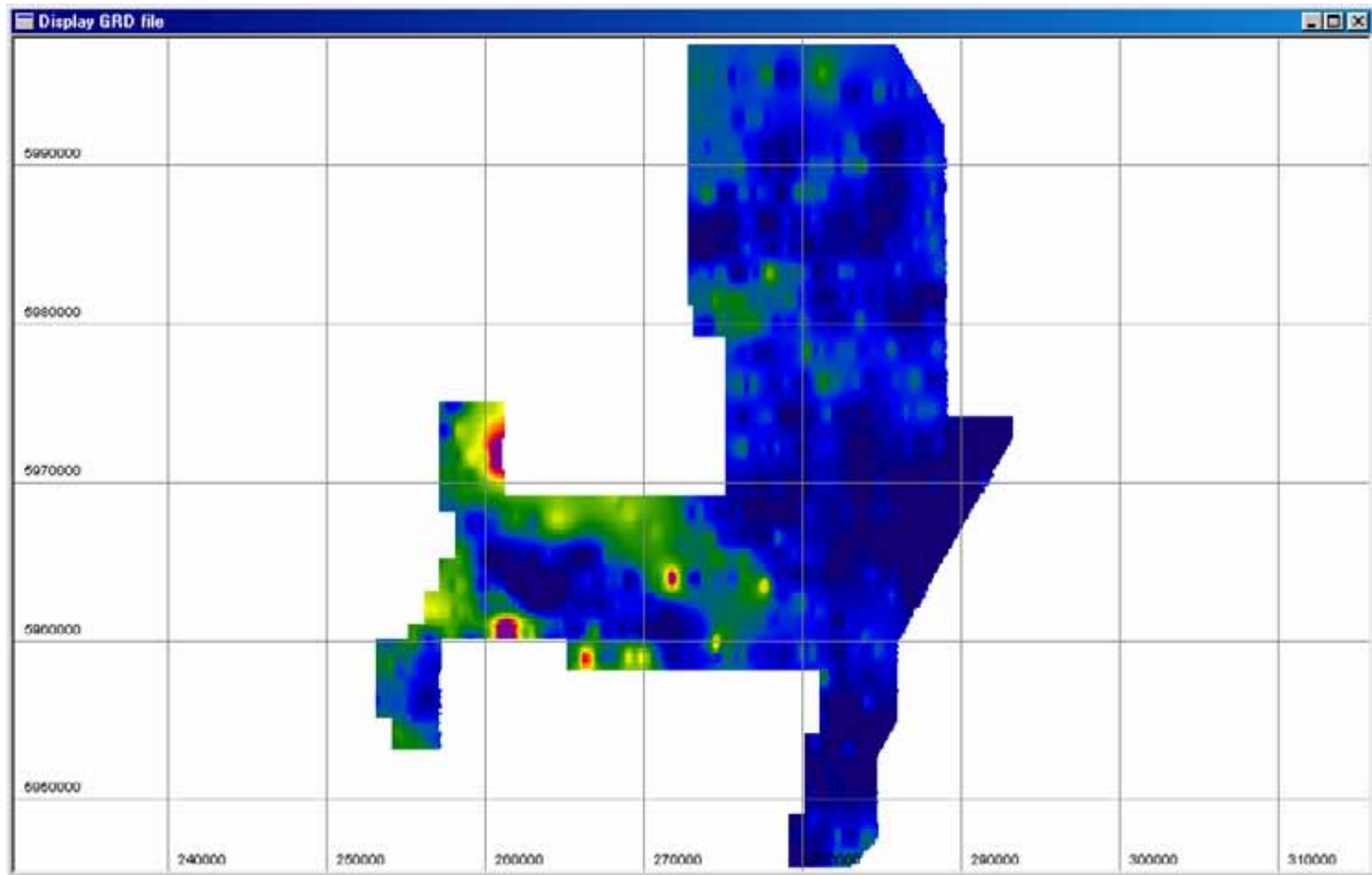
Exploration Management Services Pty Ltd

Regional Soil Program

Gold Fields Australasia Pty Ltd



Soil Results - Gold

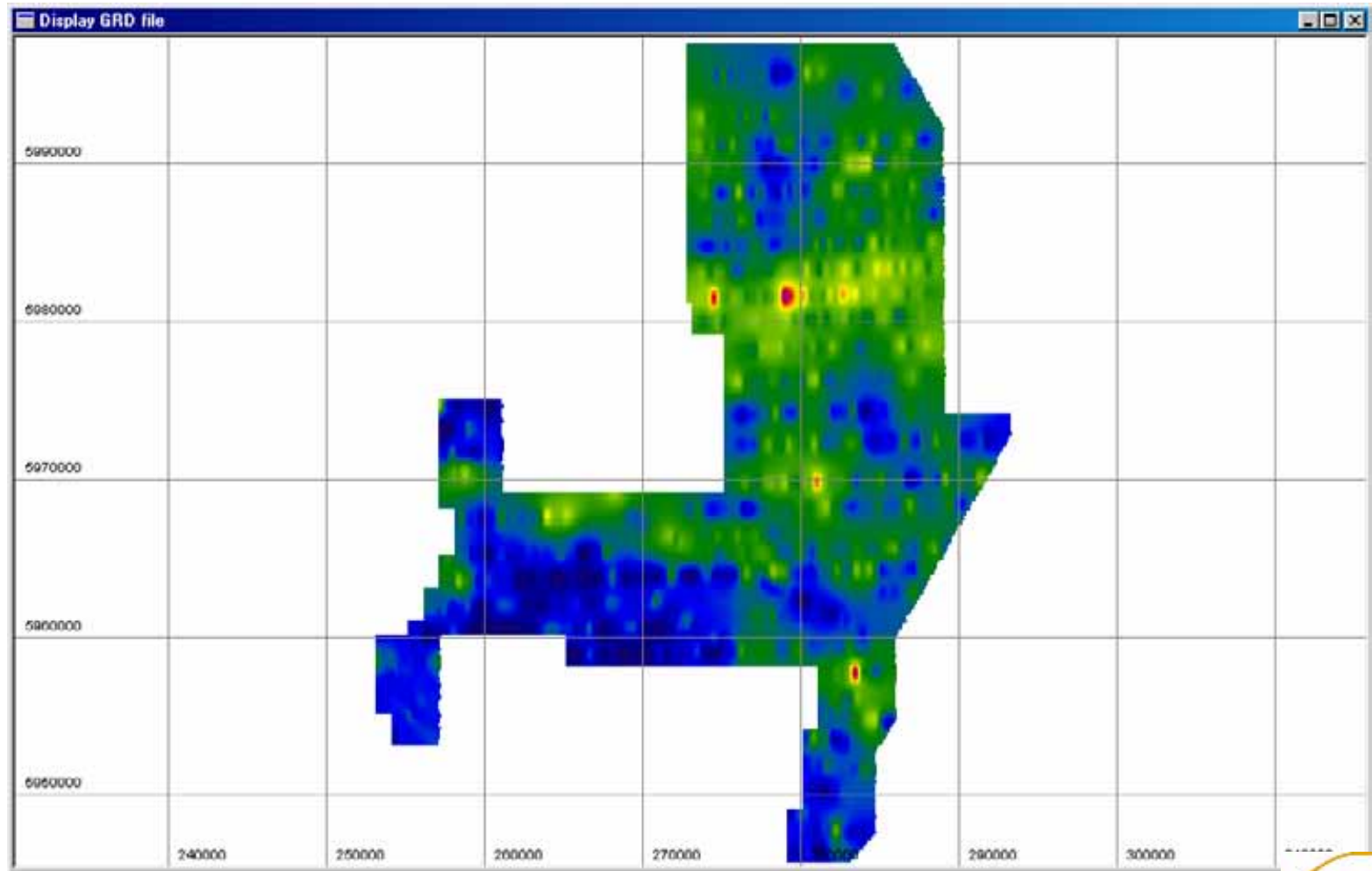


Exploration Management Services Pty Ltd

Gold Fields Australasia Pty Ltd



Soil Results – other metals



Exploration Management Services Pty Ltd

Gold Fields Australasia Pty Ltd



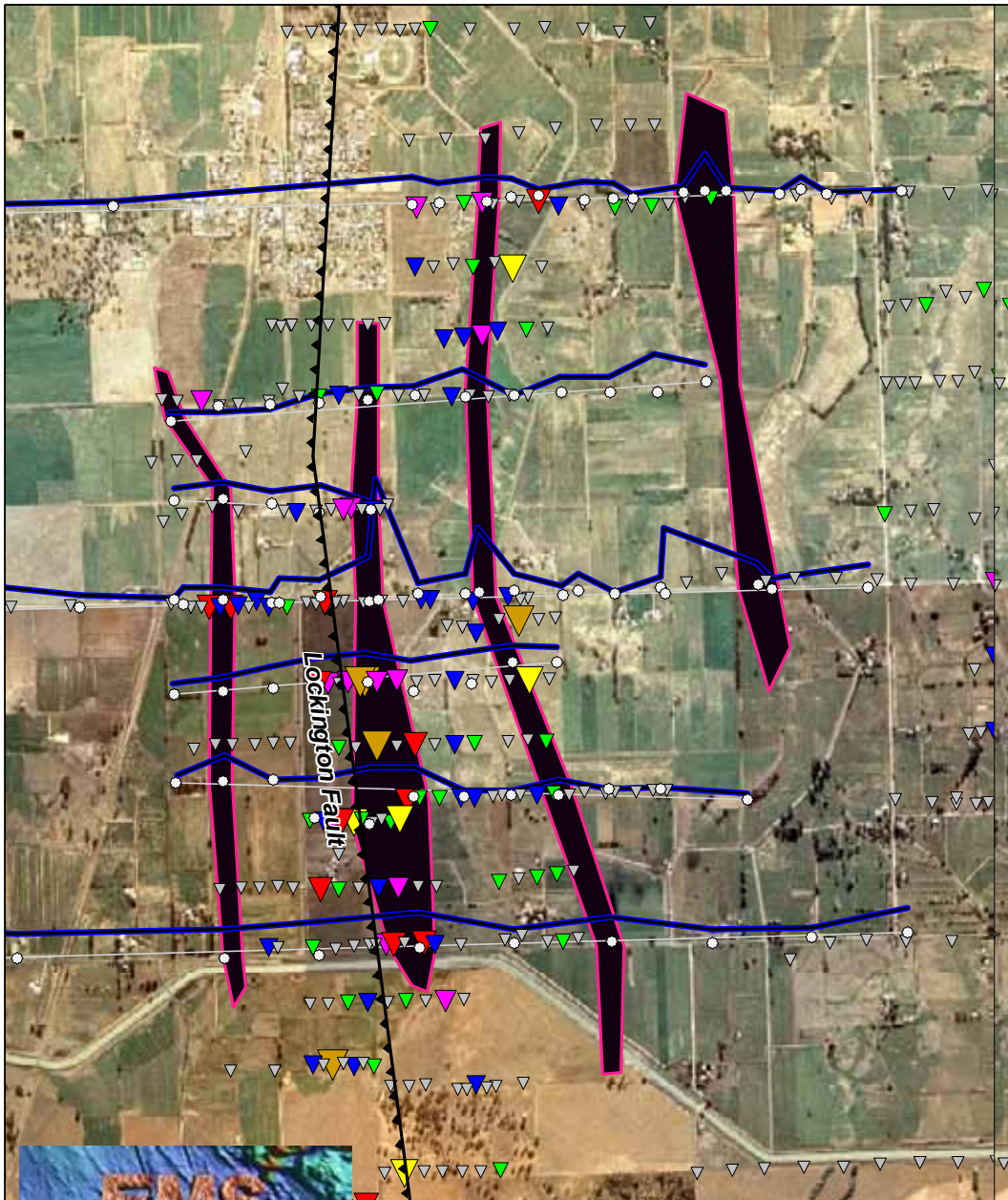
Lockington South Silver Anomaly

Stacked profiles of the Lockington South Metals in soils anomaly

Create linear soil anomalies for aircore basement testing

Compares with AirCore – gold in basement results

Results have close spatial relationship to the interpreted Lockington Fault



Exploration Management Services Pty Ltd

Gold Fields Australasia Pty Ltd



AirCore drilling at Lockington



Exploration Management Services Pty Ltd

Gold Fields Australasia Pty Ltd



INITIAL AIRCORE DRILL RESULTS

Hole ID	From (m)	To (m)	Thick (m)	Au (ppm)	As (ppm)	Sb (ppm)	Depth to Basement	Line
04LOKC001	75	90	15	0.53	203	9	54	1
04LOKC006	66	72	6	0.74	190	35	66	1
04LOKC006	78	81	3	0.15	90	19	66	1
04LOKC011	59	60	1	0.12	89	11	59	1
04LOKC011	66	69	3	0.13	125	26	59	1
04LOKC008	96	111	15	0.29	148	10	84	2
04LOKC010	78	81	3	0.12	72	21	78	2
04LOKC010	96	111	15	1.27	290	17	78	2
04LOKC016	99	102	3	0.11	511	1	102	3
04LOKC019	78	84	6	0.28	33	5	78	3
04LOKC019	93	99	6	0.18	49	3	78	3
04LOKC020	84	87	3	0.12	15	15	69	3
04LOKC020	93	99	6	0.13	42	13	69	3

First hole intersected 15 metres @ 0.53 gm/t gold

Of 20 holes in initial program, 8 intersected significant gold with good arsenic support.

Rocks, however, were not particularly interesting

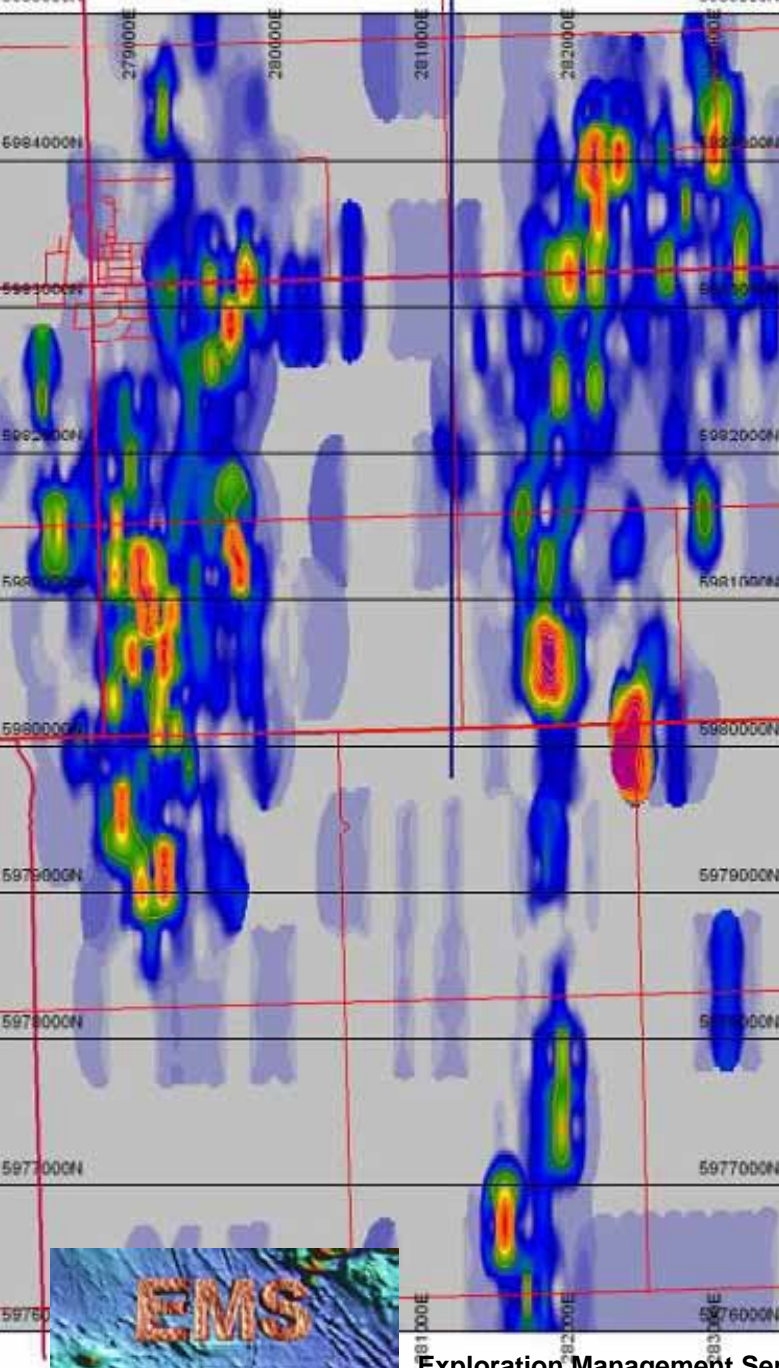
LOCKINGTON BEDROCK ANOMALIES

GOLD

Basement under cover, at depths ranging from 40 metres in the south, to 120 metres in the north

Anomalies defined by intersections > 0.1 ppm Au

Max gold in bedrock 7.0 ppm



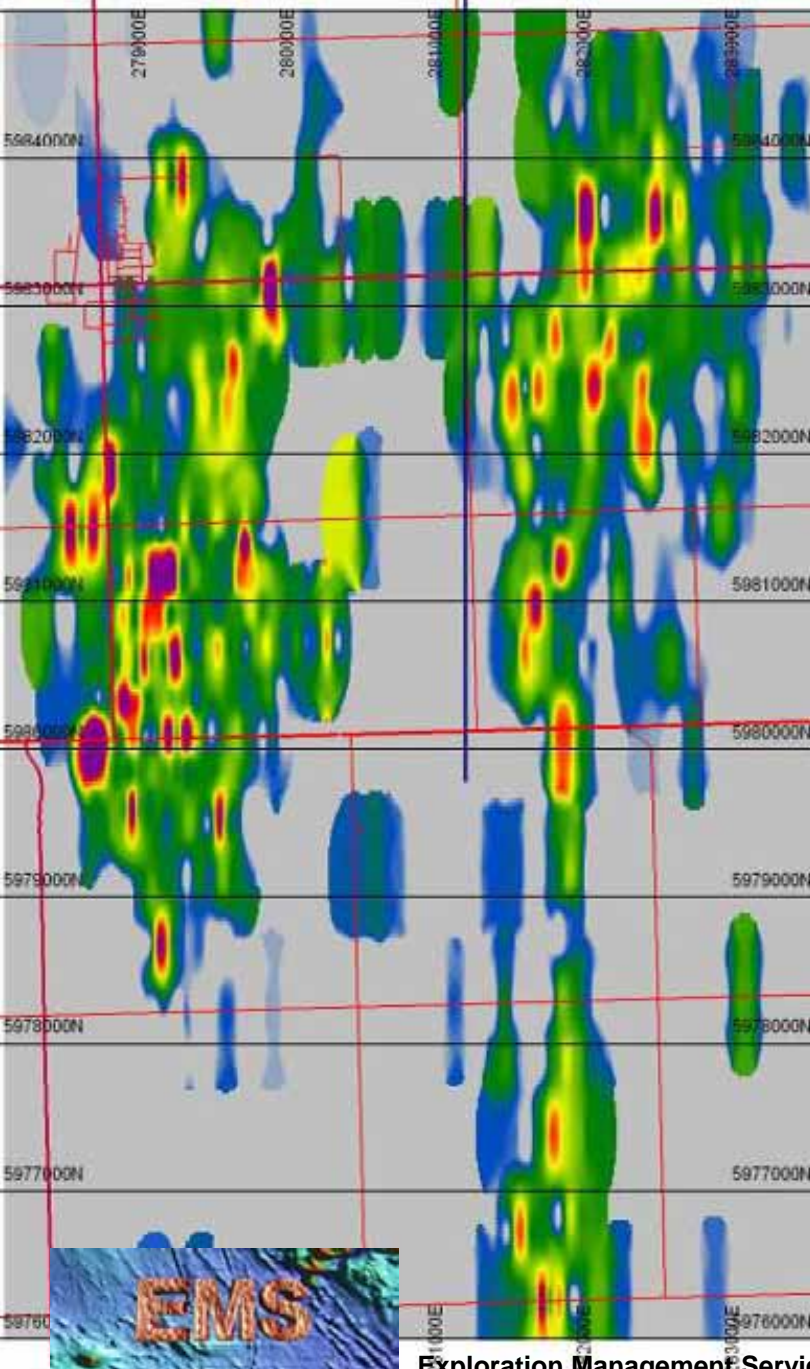
LOCKINGTON BEDROCK ANOMALIES

ARSENIC

More diffused anomaly, due to higher mobility of arsenic in saprolite zone

Anomalies defined by intersections > 50 ppm As

Max arsenic in bedrock 4,730 ppm



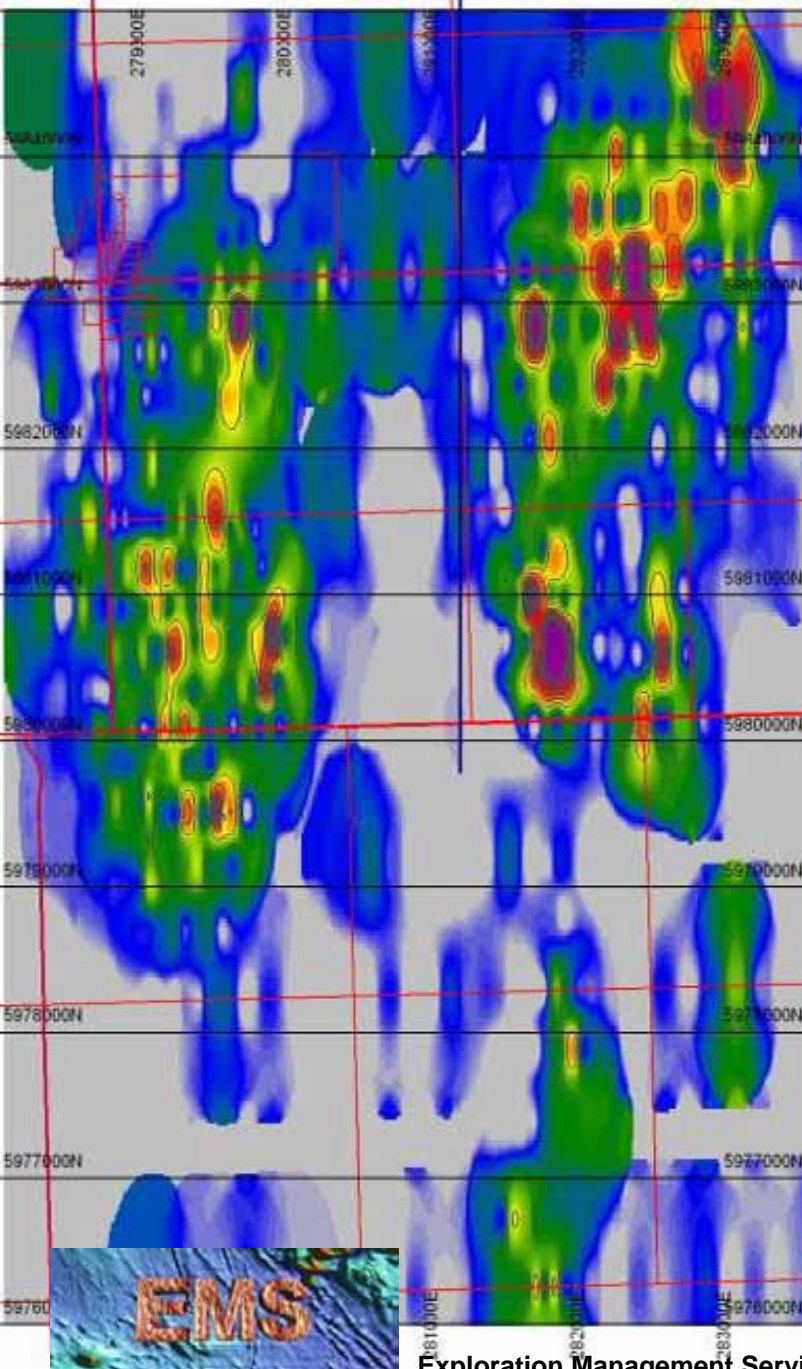
LOCKINGTON BEDROCK ANOMALIES

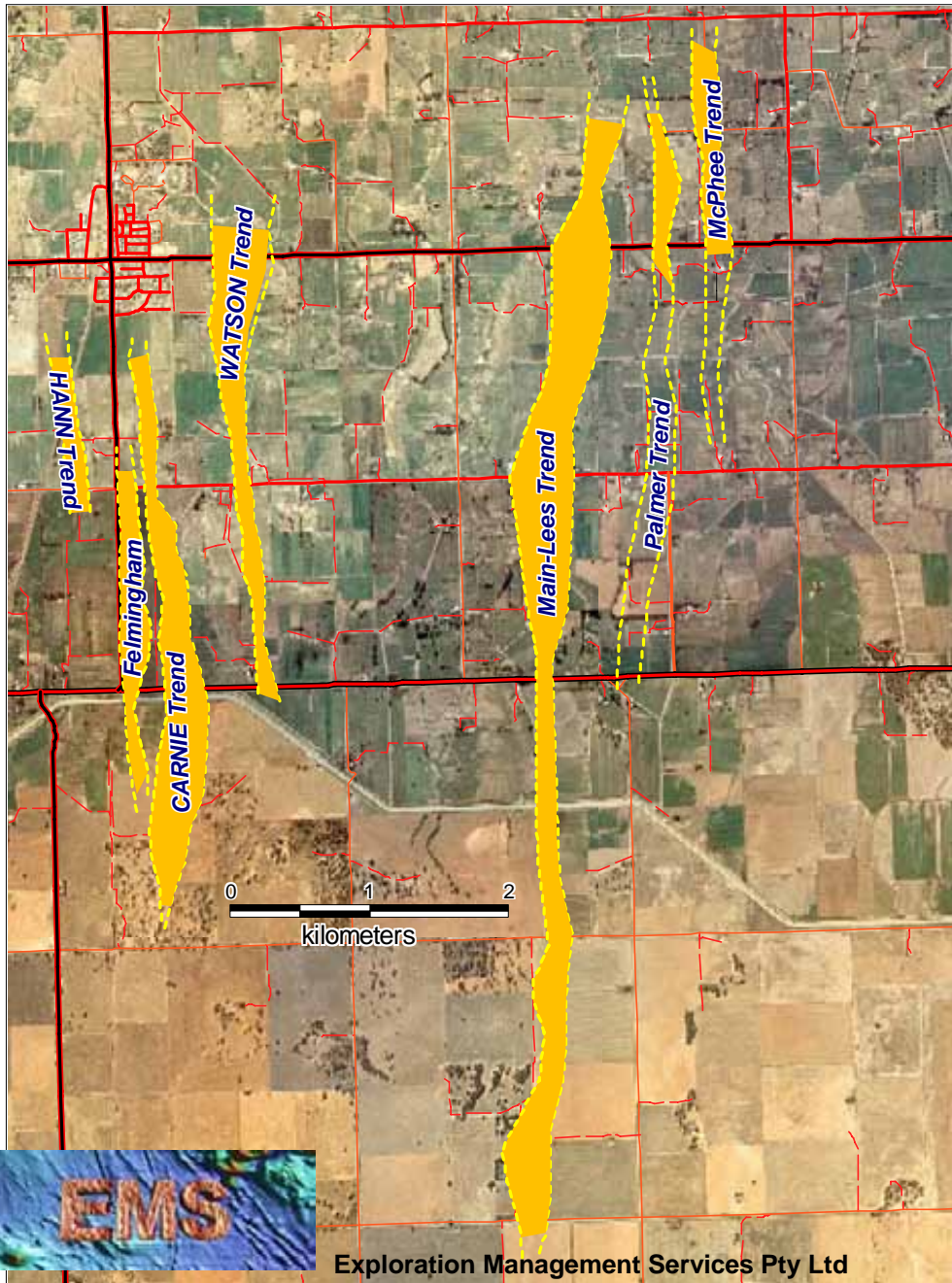
ANTIMONY

Basement under cover, at depths ranging from 40 metres in the south, to 120 metres in the north

Anomalies defined by intersections > 10 ppm Sb

Max antimony in bedrock 303 ppm

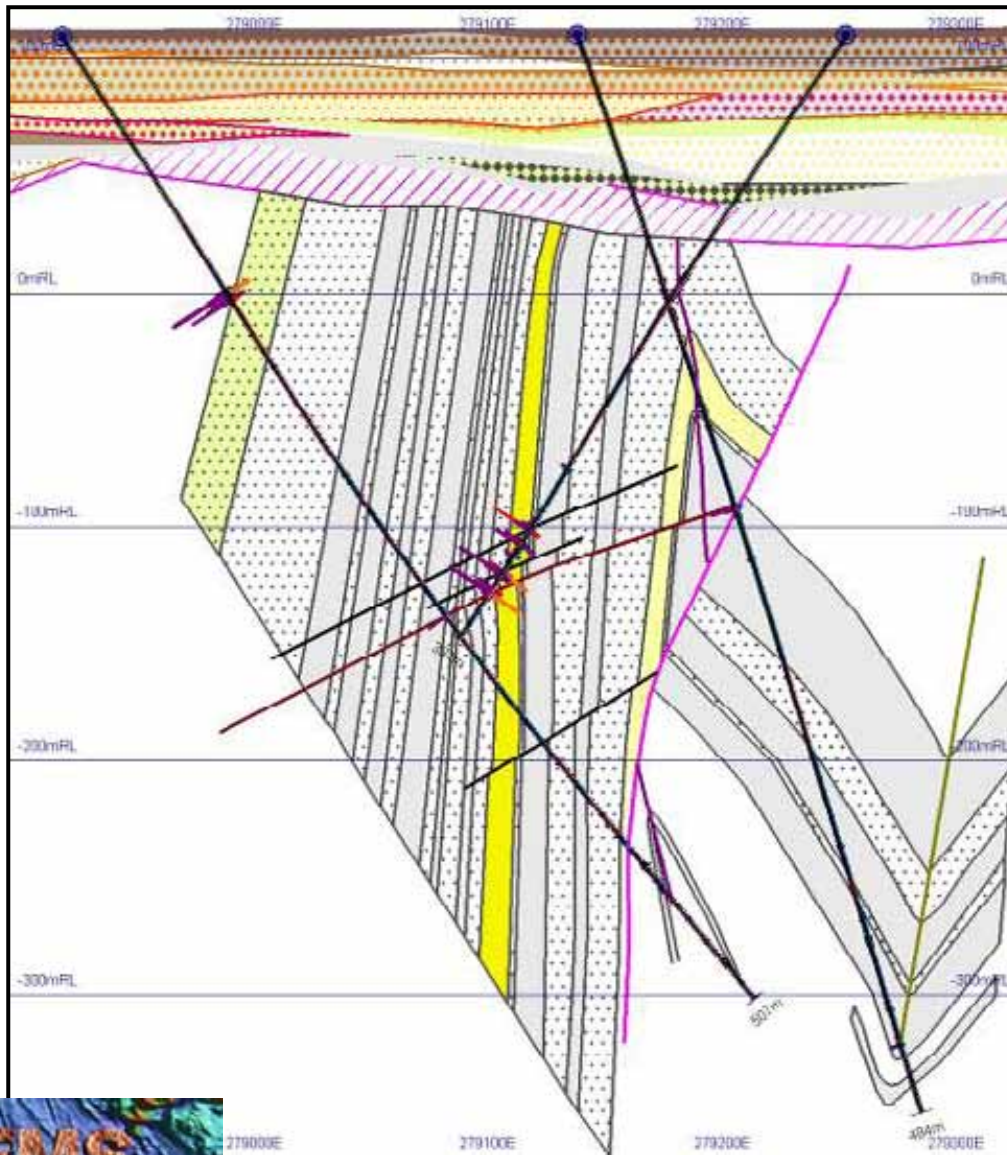




- 7 mineralised trends identified
- 3 major trends selected for diamond drill testing
- Longest trend is 8.0 km, open both ends
- Mineralised area of 9 km long x 5 km wide



DIAMOND DRILLING



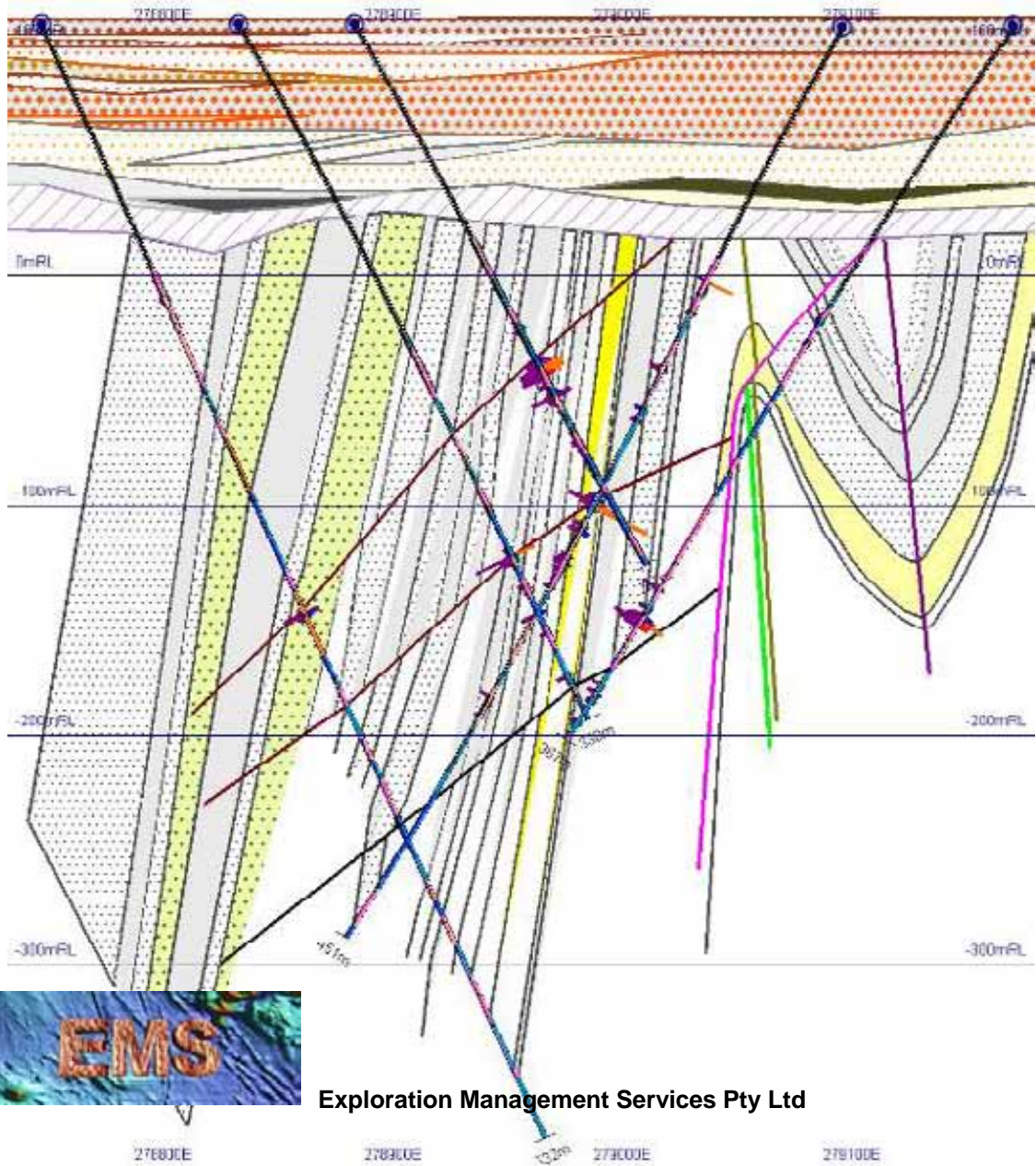
Section 5980600N

Mineralisation appears to be associated with west dipping reverse faults in shoulder of Friesian Anticline

Displacement along fault variable



DIAMOND DRILLING



Section 5981200N

Mineralisation appears to be associated with west dipping reverse faults in shoulder of Friesian Anticline

Displacement along fault variable

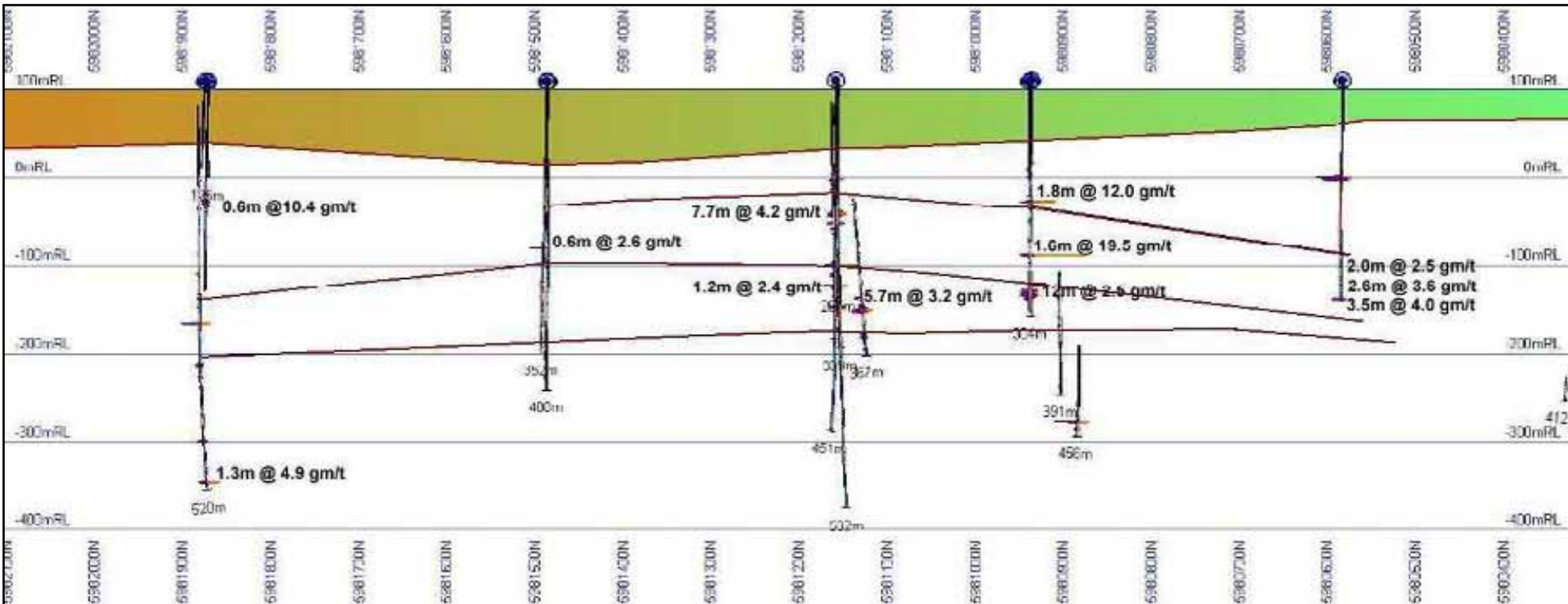


Lockington – Significant Diamond Drill Results

Hole ID	From (m)	To (m)	Thickness (m)	Au (ppm)	As (ppm)	East	North	Azimuth	Dip
05LODH001	166.0	173.7	7.7	4.24	3488	278900	5981179	89	-60
05LODH001	181.5	183.6	2.1	2.92	3352				
05LODH002	259.8	261.0	1.2	2.44	3748	278849	5981176	89	-60
05LODH004	154.6	156.4	1.8	12.04	3887	278936	5980956	89	-60
05LODH004	224.5	226.1	1.6	19.49	4064				
05LODH004	270.0	282.0	12.0	2.47	2987				
05LODH005	230.8	234.9	4.1	6.28	2460	279112	5981183	269	-60
05LODH005	245.8	247.5	1.7	1.77	2224	279112	5981183	269	-60
05LODH006	280.0	282.0	2.0	2.47	3033	278763	5981174	89	-65
05LODH007	303.2	308.9	5.7	3.15	3406	279186	5981164	269	-55
05LODH008	437.2	437.7	0.5	7.55	7810	279257	5980911	269	-62
06LODH012	161.0	162.6	1.6	1.51	1722	278965	5981892	89	-58
06LODH012	289.6	290.2	0.6	10.40	17100				
06LODH015	141.2	146.3	5.1	1.65	4083	279150	5979974	89	-58
06LODH017	301.4	302.3	0.9	3.47	6003	278836	5981903	91	-60
06LODH017	453.0	454.6	1.6	1.54	2815				
06LODH017	508.5	509.8	1.3	4.91	1705				
06LODH020	203.0	204.1	1.1	2.64	3992	279604	5981442	89	-58
07LODH022	128.4	130.9	2.5	4.17	7659	278933	5980603	89	-57
07LODH022	129.1	130.9	1.8	5.40	9778				
07LODH022	132.3	134.1	1.8	2.48	5427				
07LODH024	256.9	258.9	2.0	2.50	4474	279269	5980598	269	-55
07LODH024	271.8	274.4	2.6	3.62	4999				
07LODH024	279.9	283.4	3.5	4.00	4796				

CARNIE TREND

LONG SECTION - Looking to east



PROGRESS

- Project initiated in July 2003
- Trial soil sampling commenced in August 2003
- Regional soil sampling commenced in February 2004
- AirCore drilling at Lockington commenced June 2004
- Bedrock anomaly at Lockington South defined by September 2004
- First pass Diamond Drilling completed May 2005
- 7 mineral trends defined by March 2007, with maximum strike length of +8 km
- Diamond drill testing of basement continuing



CENTRAL VICTORIA PROJECT

- EXPLORATION UNDERCOVER – USEFUL TOOLS
 - Regional borehole datasets \Rightarrow *broad basement topography*
 - Regional gravity datasets \Rightarrow *structural setting*
 - TEM: \Rightarrow *locate palaeochannels*
 - Soil geochemistry – *in certain situations*
 - Lots of AirCore Drilling

