



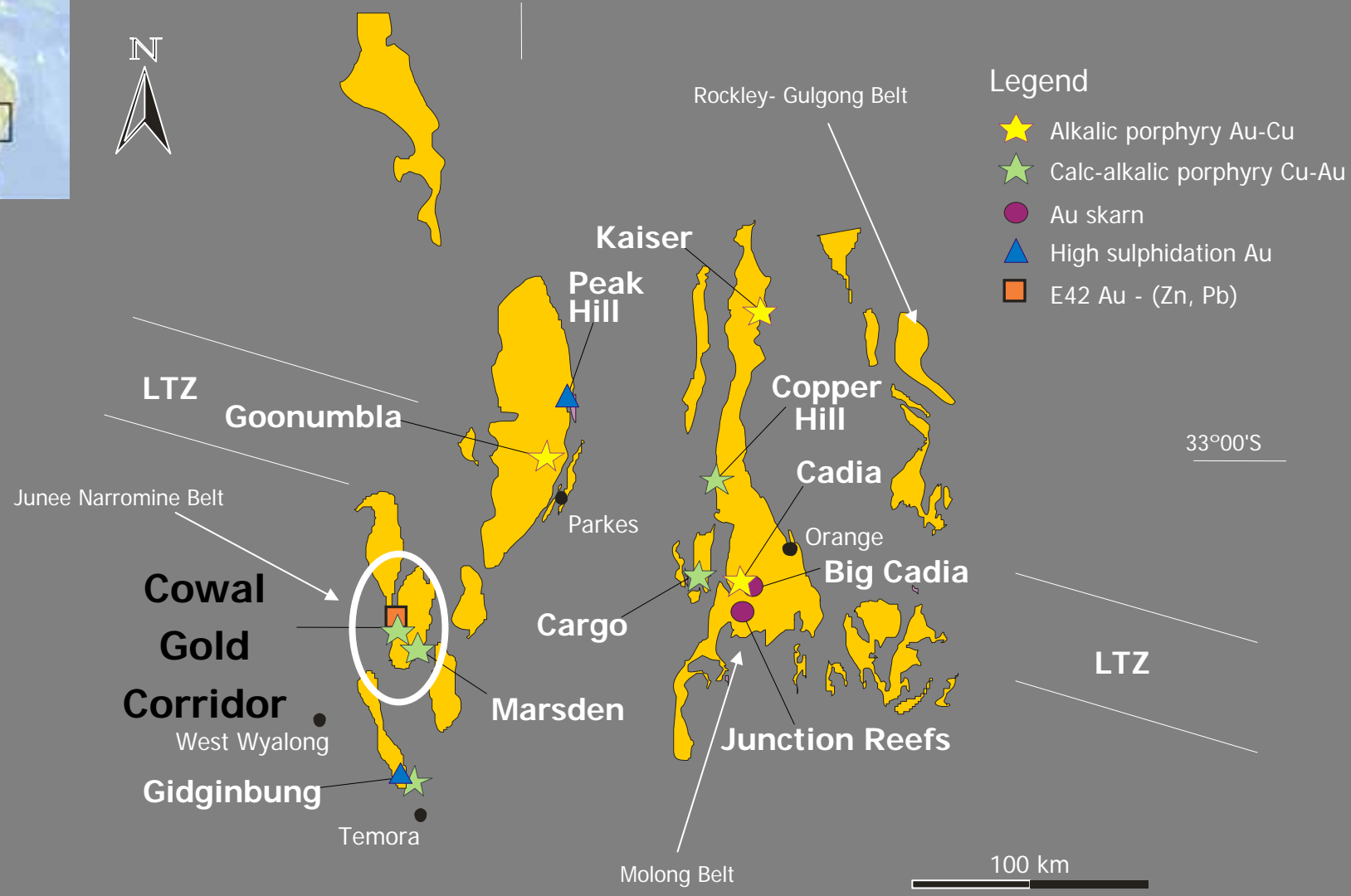
BARRICK

Cowal Gold Corridor

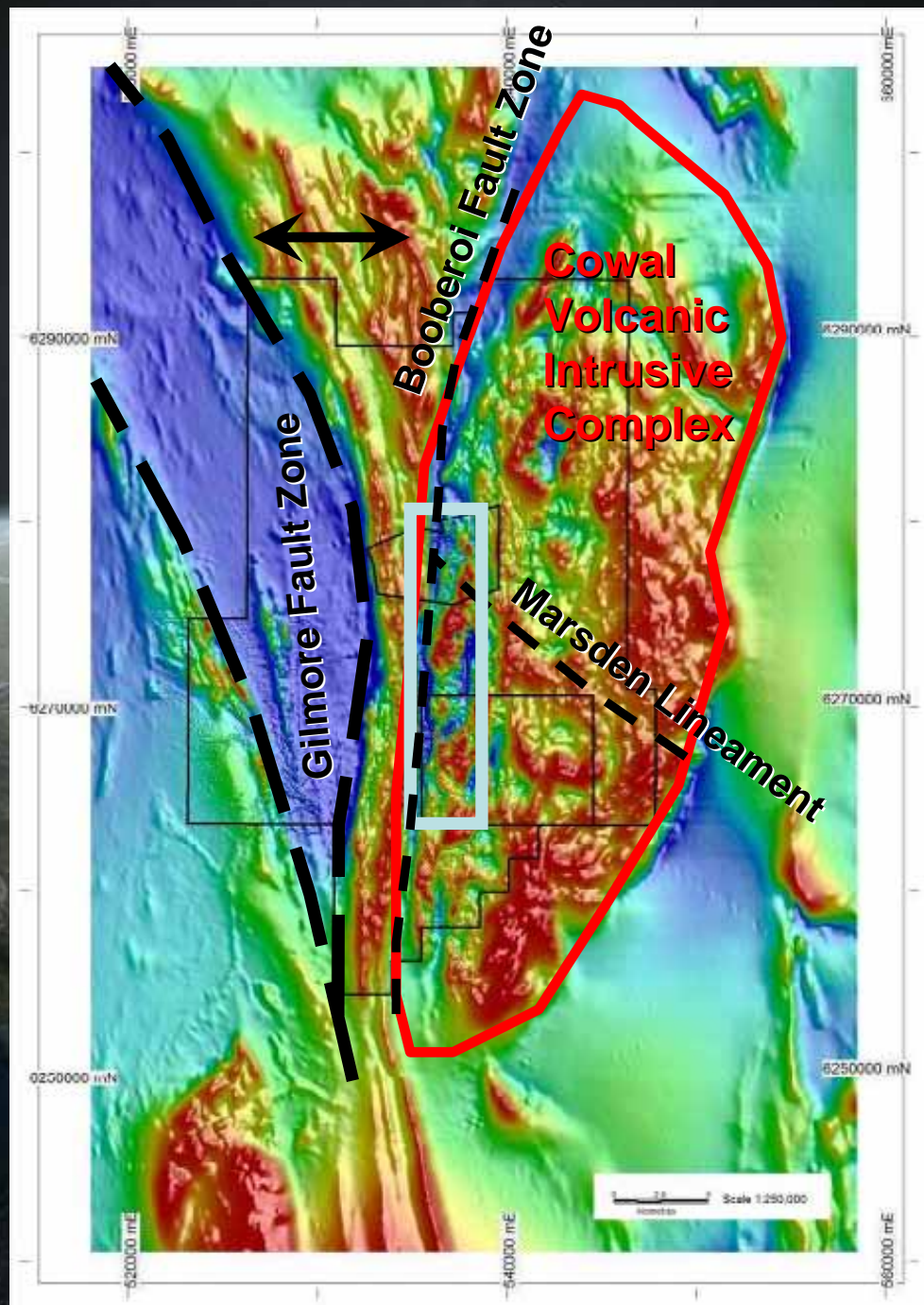
“Opening Other Doors”

- “The Doors” of the Corridor – local geology of Cowal Gold Corridor
- Styles and controls on mineralisation within the Corridor
- Vein paragenesis
- Summary of characteristics of Cowal Gold Corridor and its deposits

Regional Geology



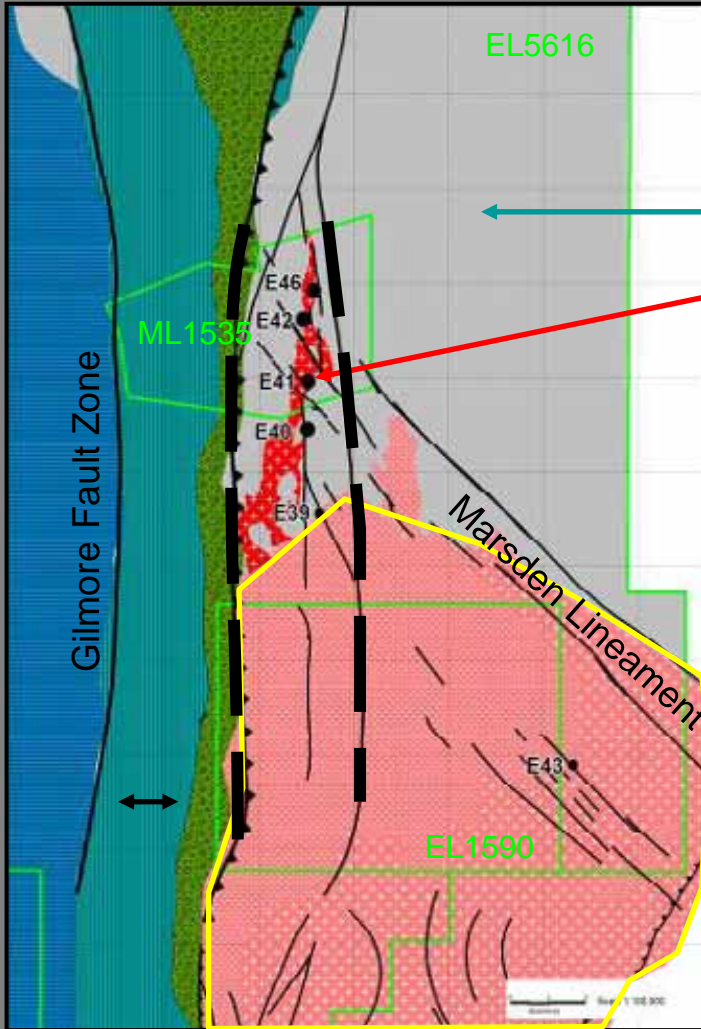
Modified from Holliday et al., 2002



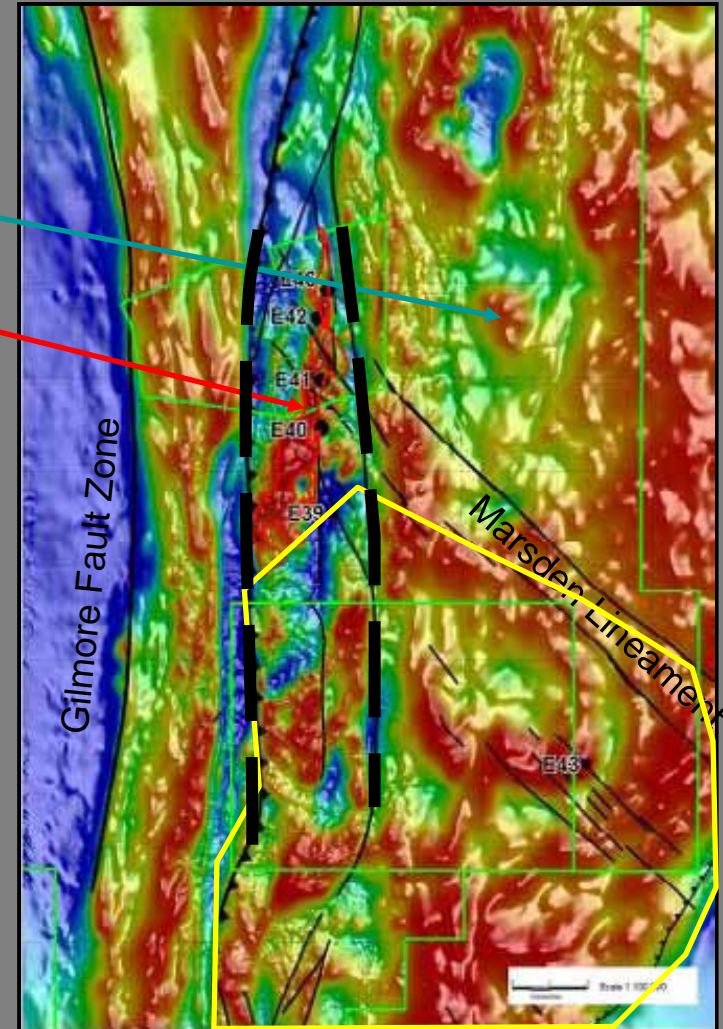
Regional Simplified Geology



BARRICK



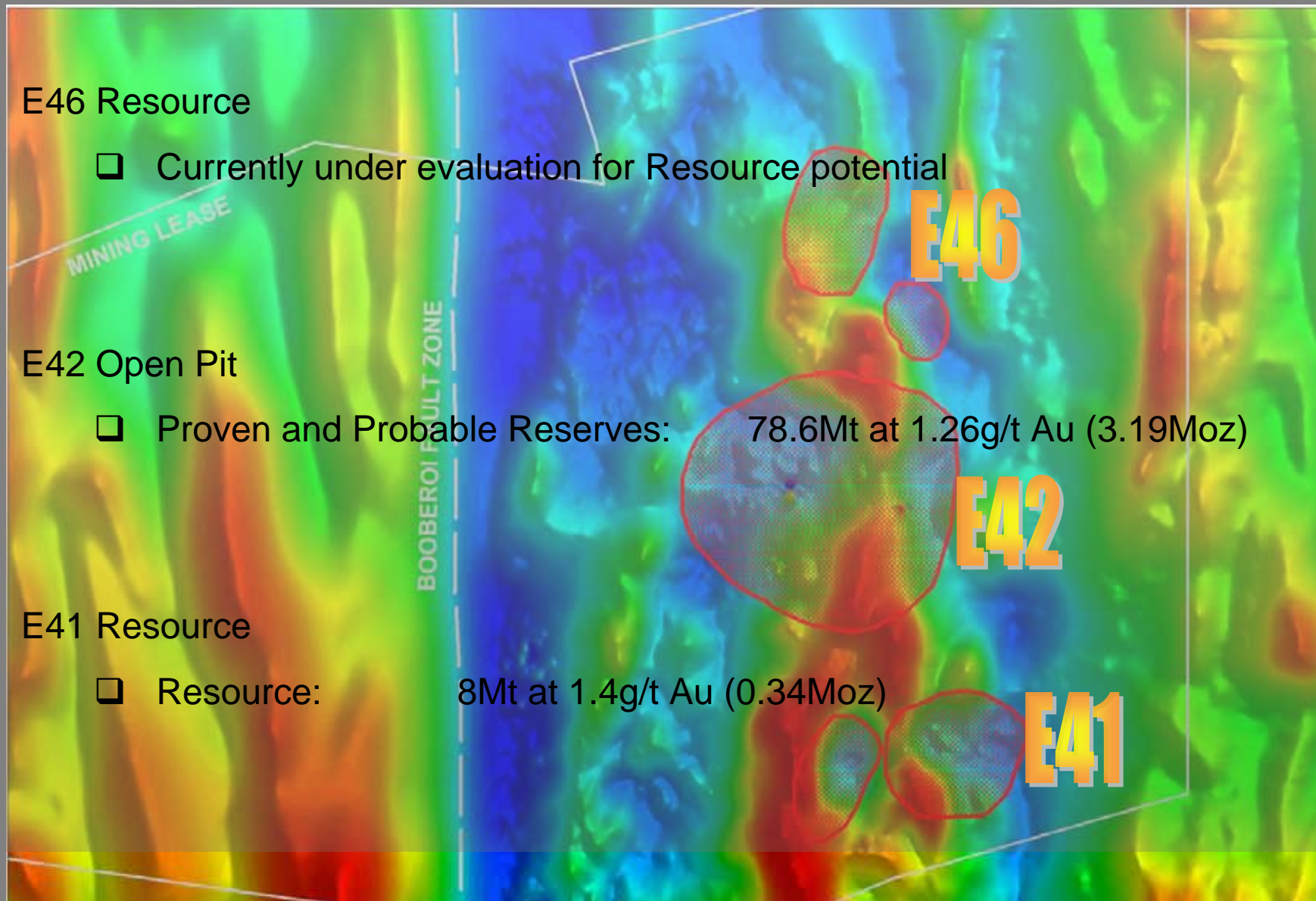
- Cowl Gold Corridor
- Volcaniclastics
- Muddy Lake Diorite
- Phase 2 Intrusion (455 – 467Ma)
- Granodiorite
- Phase 3 Intrusion (445-452Ma)

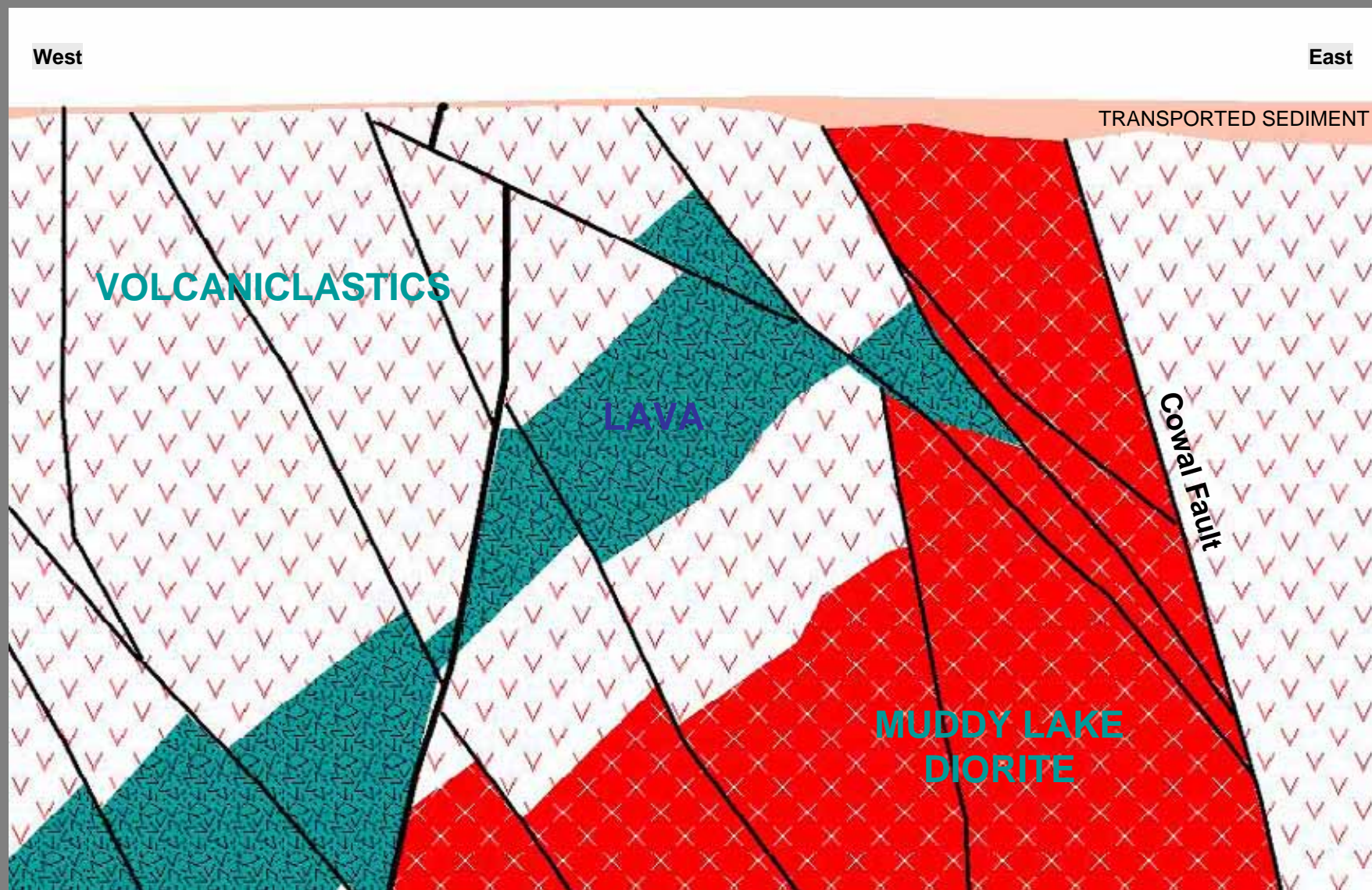


"The Doors" of the Corridor

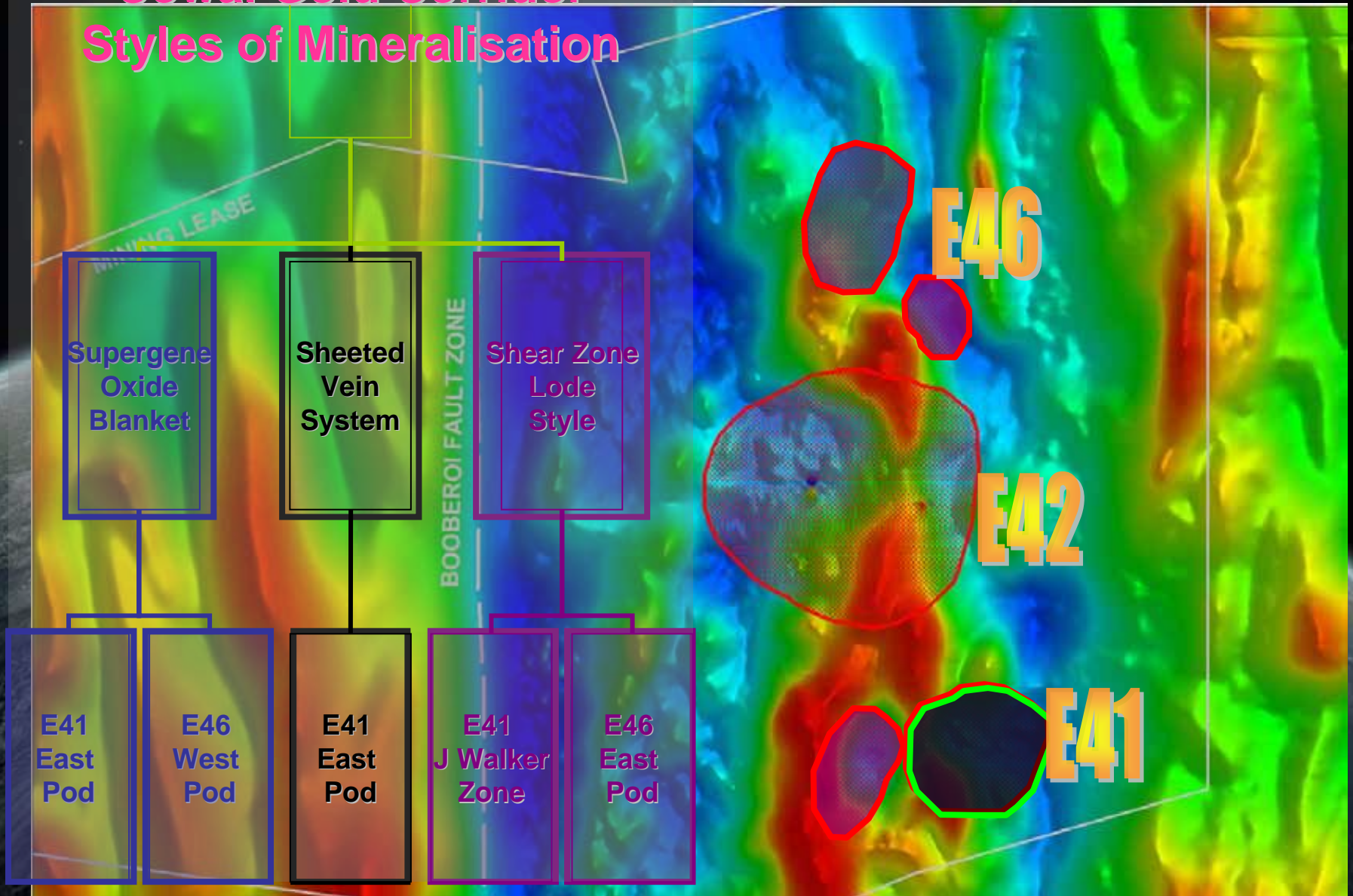


BARRICK





Cowal Gold Corridor Styles of Mineralisation



Supergene
Oxide
Blanket

Sheeted
Vein
System

Shear Zone
Lode
Style

E41
East
Pod

E46
West
Pod

E41
East
Pod

E41
J Walker
Zone

E46
East
Pod

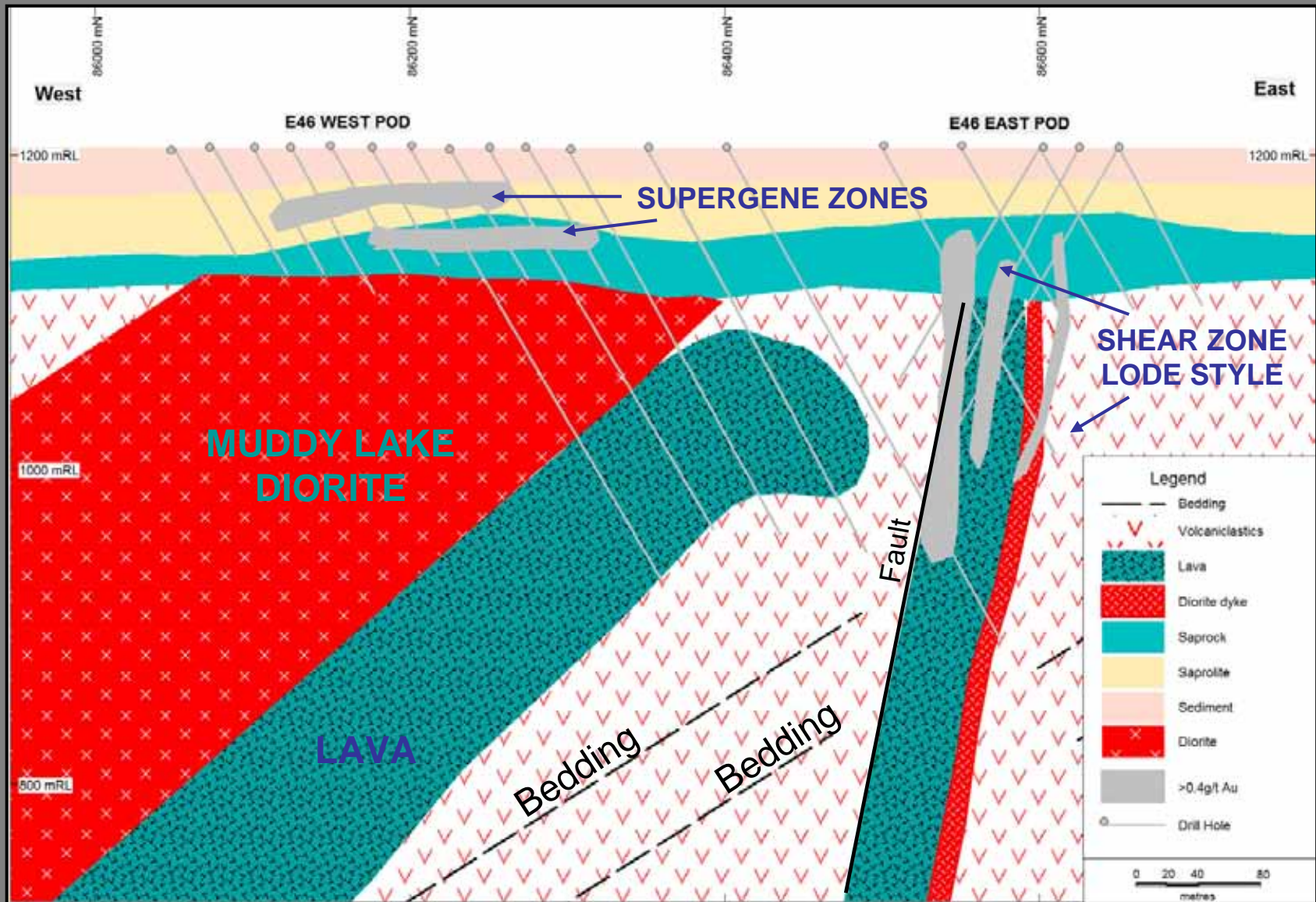
E46

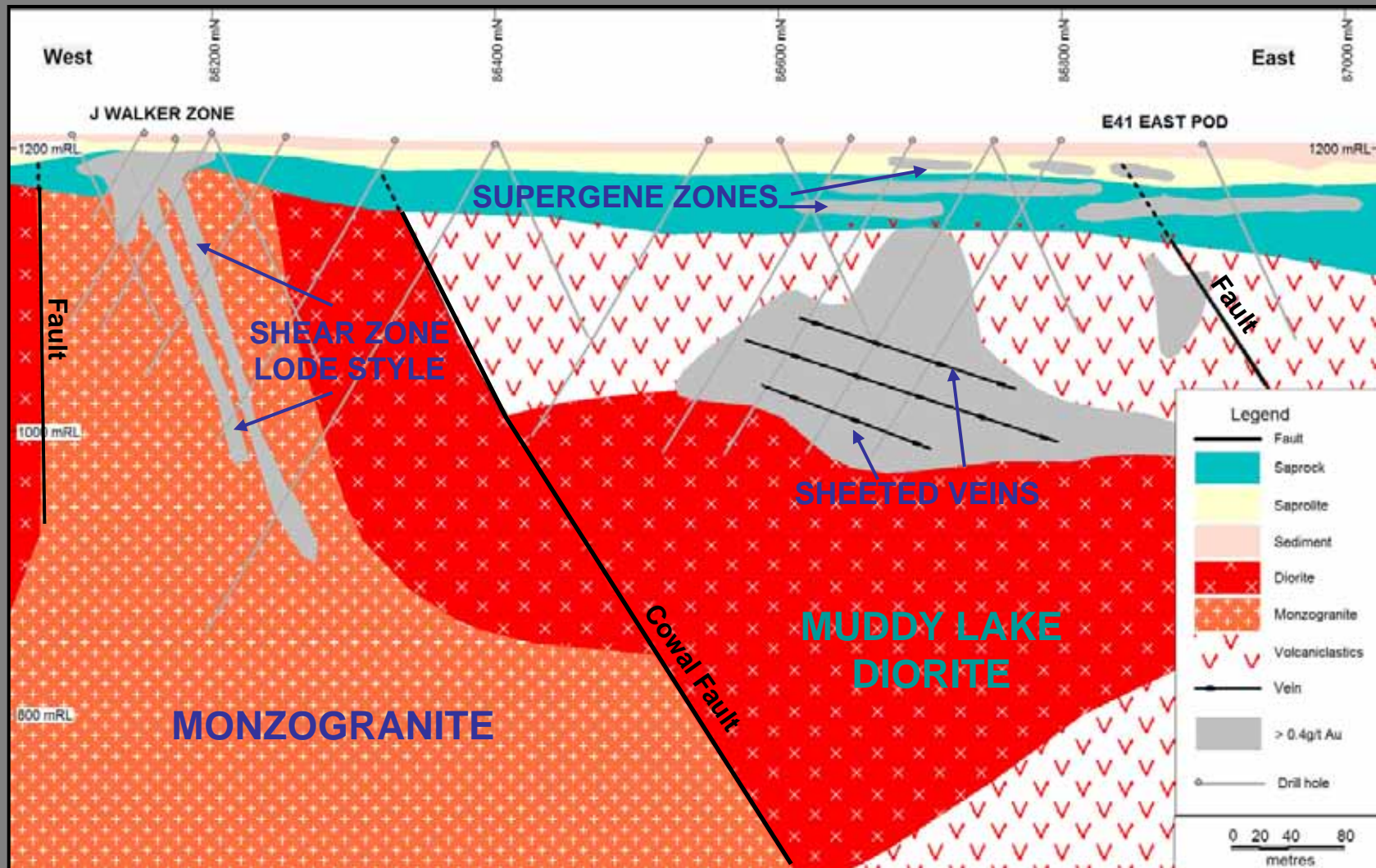
E42

E41

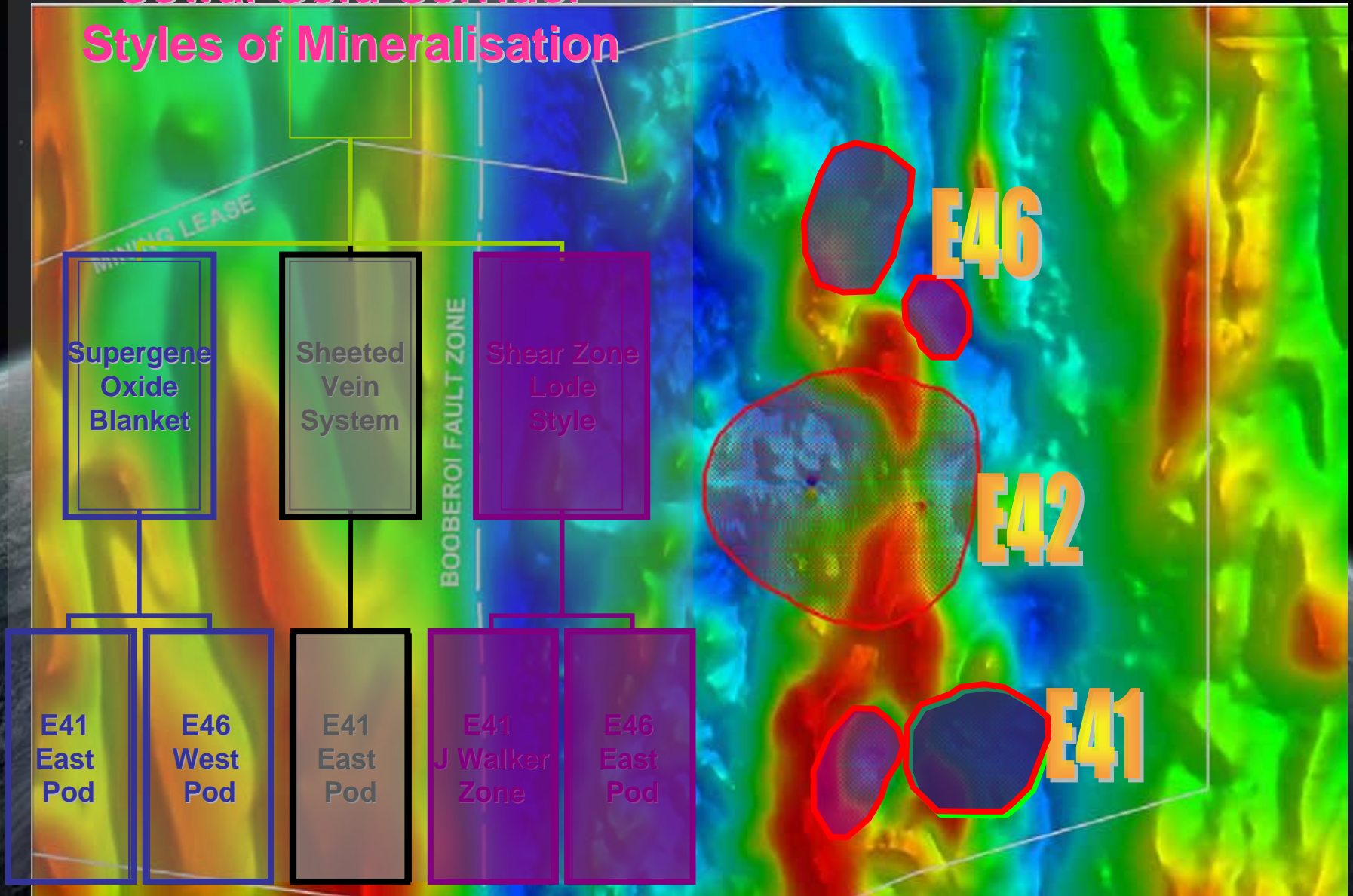
MINING LEASE

BOOBEROI FAULT ZONE





Cowal Gold Corridor Styles of Mineralisation

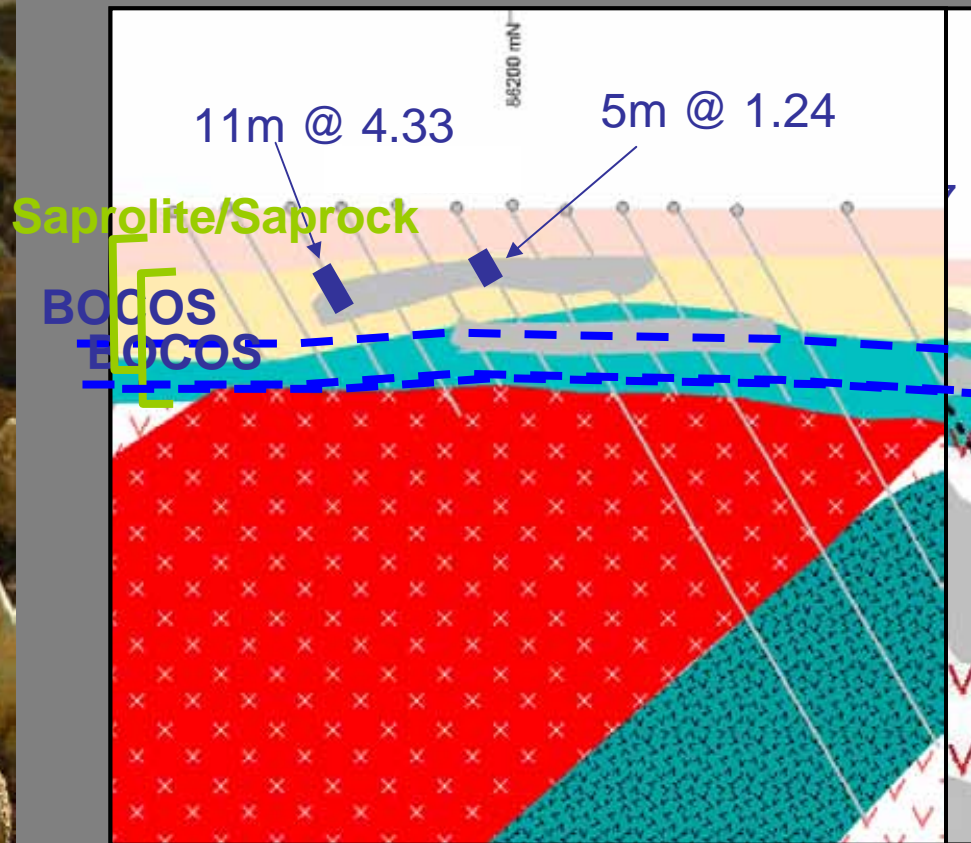


Supergene oxide zones



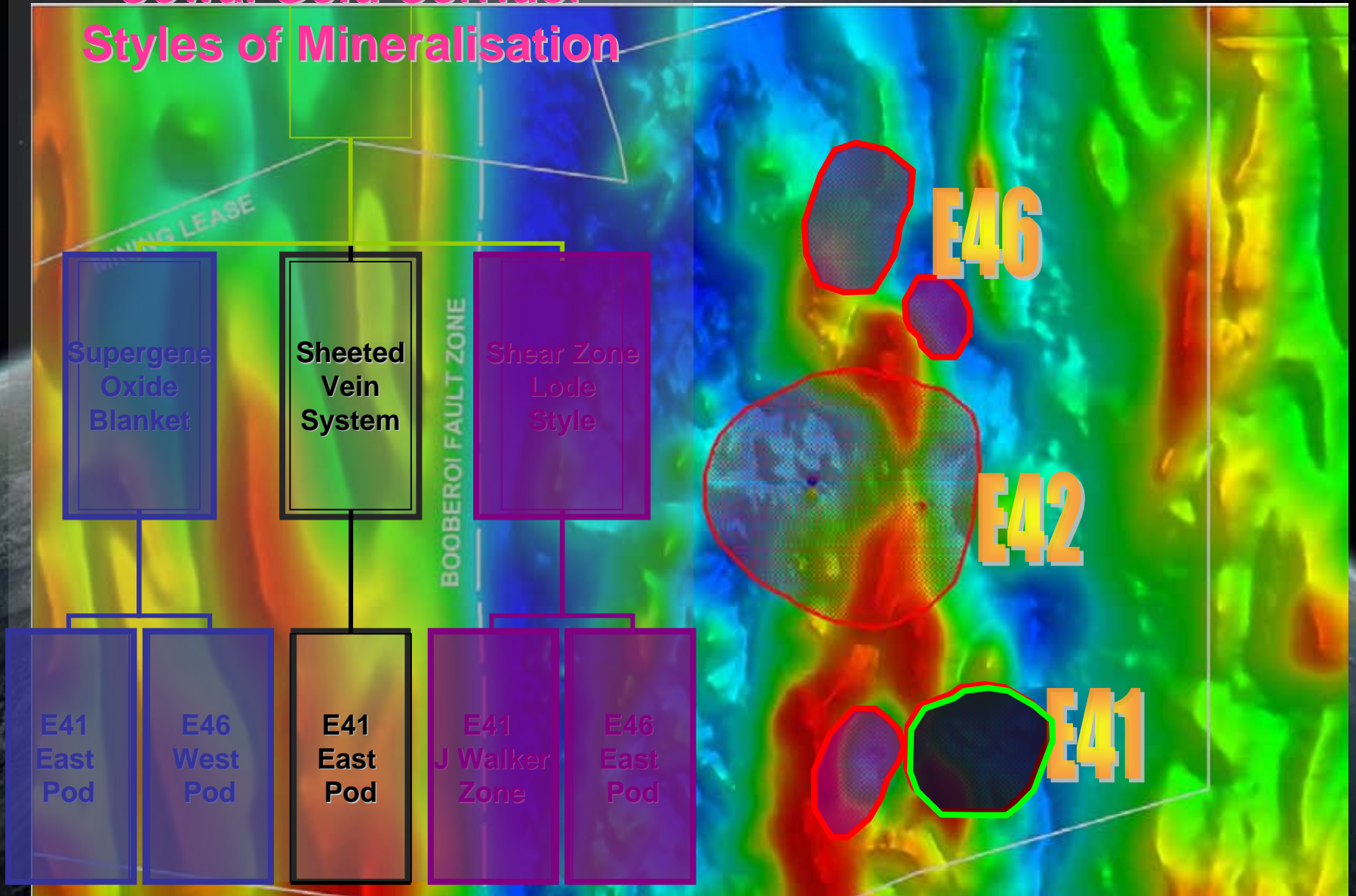
BARRICK

- Several hundred metres wide; 1-15m thick
- Associated with dark brown- black goethite stringer veining and goethite rich quartz veins



E46 West Pool

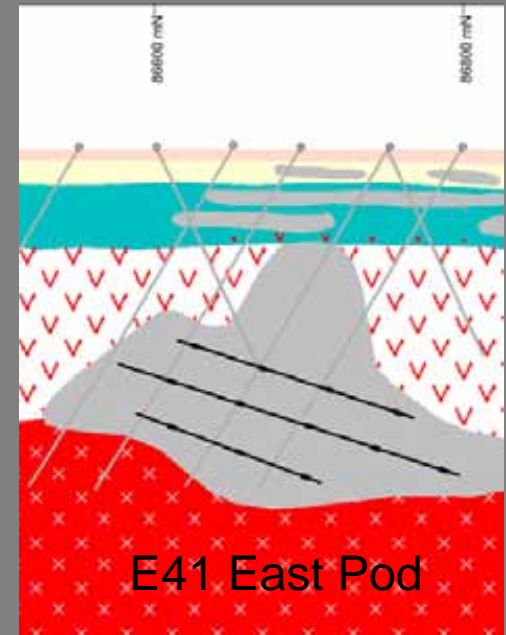
Cowal Gold Corridor Styles of Mineralisation

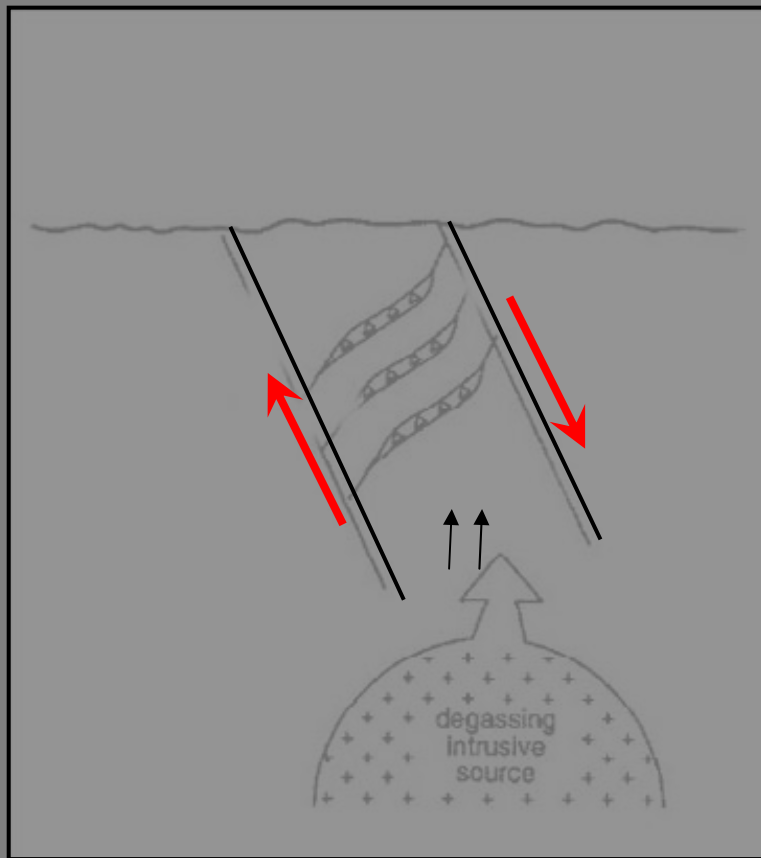




- Moderately dipping dilational veins with disseminated sulphides
- Calc-potassic alteration
- Overprinted by carbonate-base metals

e.g. rare sphalerite and galena, mainly chalcopyrite

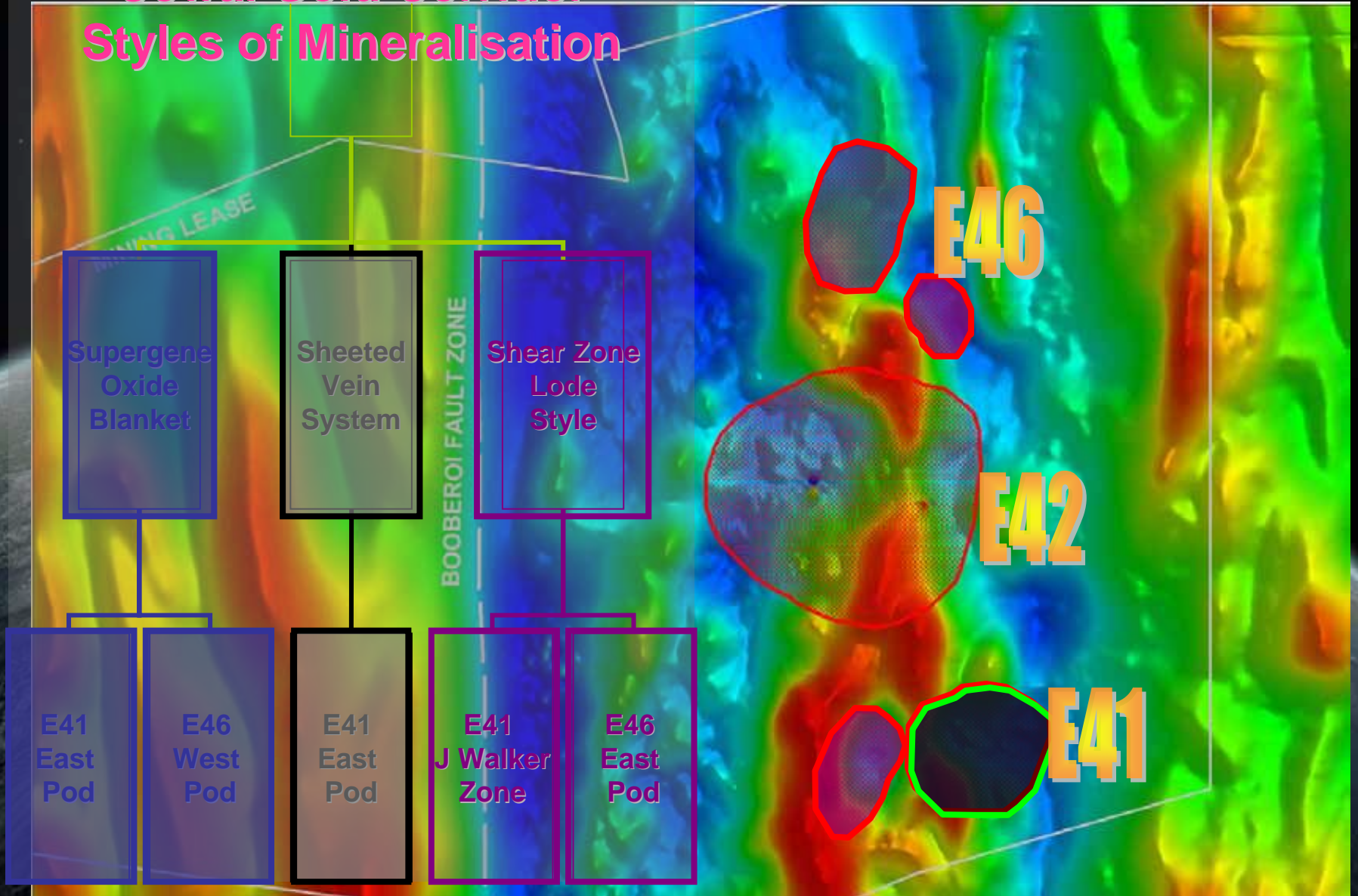




- Pre- Au mineralising event
- Rock competency – dilational veins in diorite and volcaniclastics
- Structures
- Degassing deep intrusive source

Adapted from Corbett and Leach, 1998

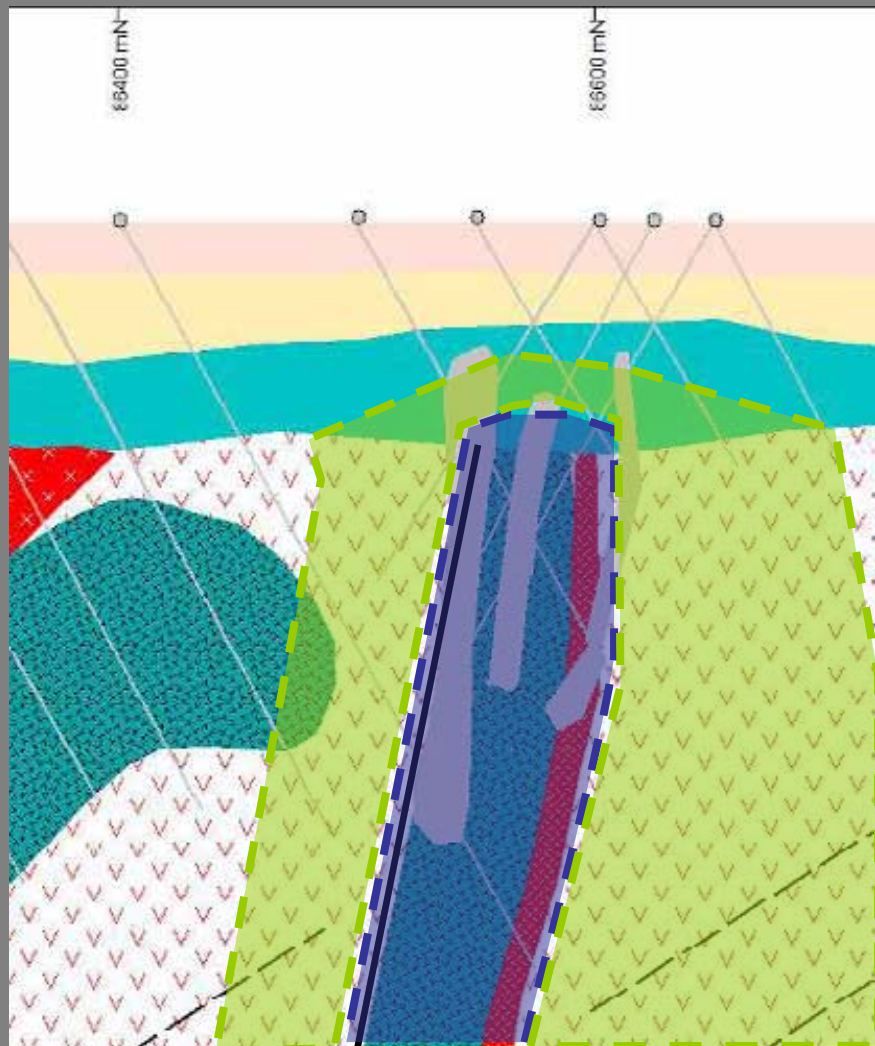
Cowal Gold Corridor Styles of Mineralisation



Shear zone lode style

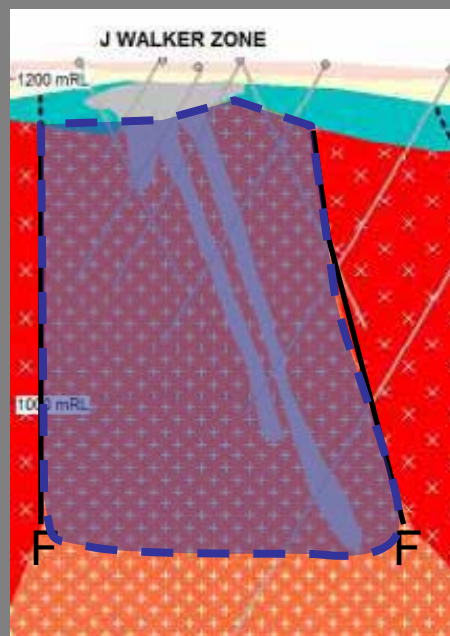


BARRICK



Fault

- Structurally controlled mineralisation
- Phyllic alteration: ser ± si ± py ± cb (ankerite)



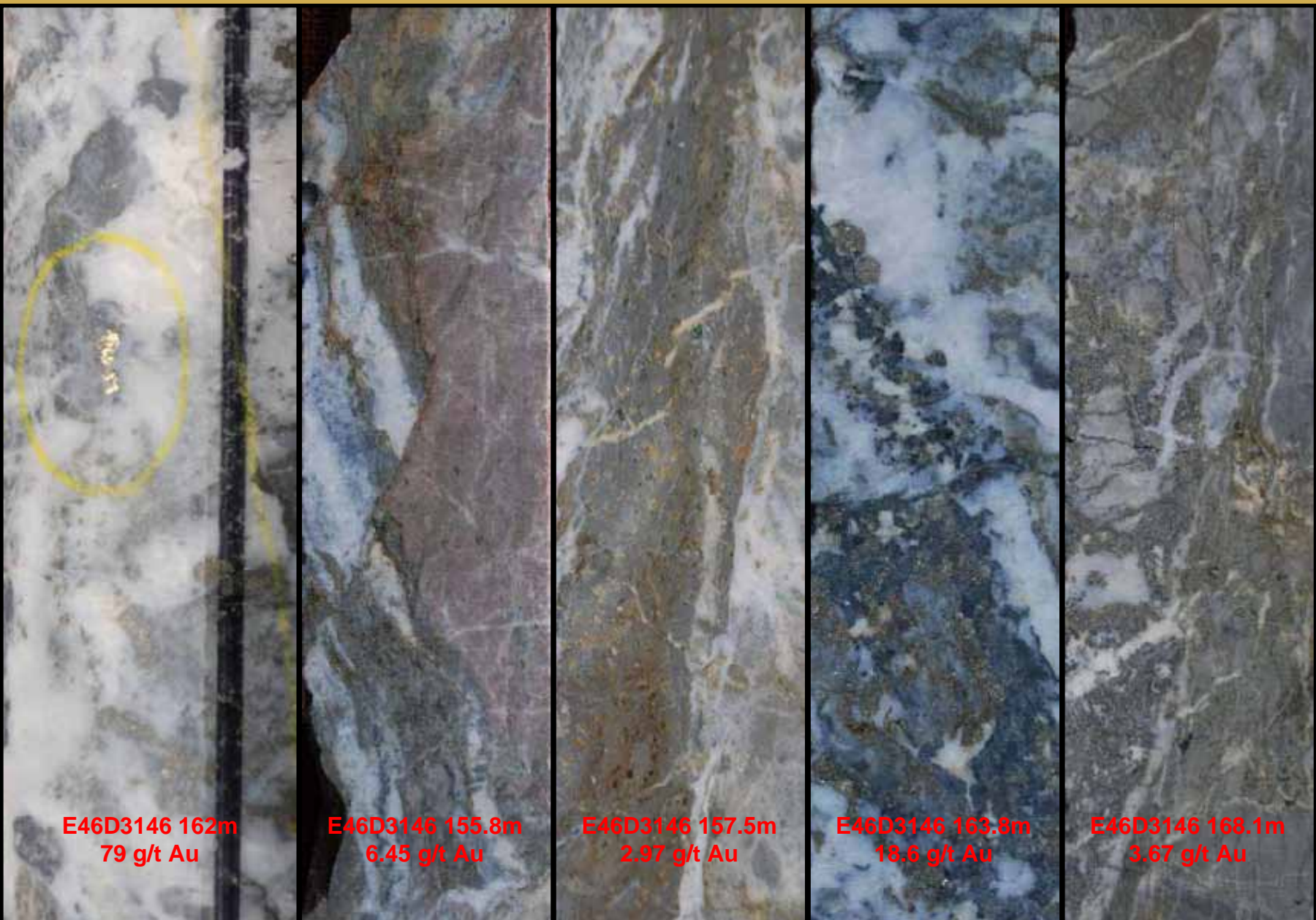
Qz-ank-py veins
E41 J Walker Zone



Shear zone lode style



BARRICK



E46D3146 162m
79 g/t Au

E46D3146 155.8m
6.45 g/t Au

E46D3146 157.5m
2.97 g/t Au

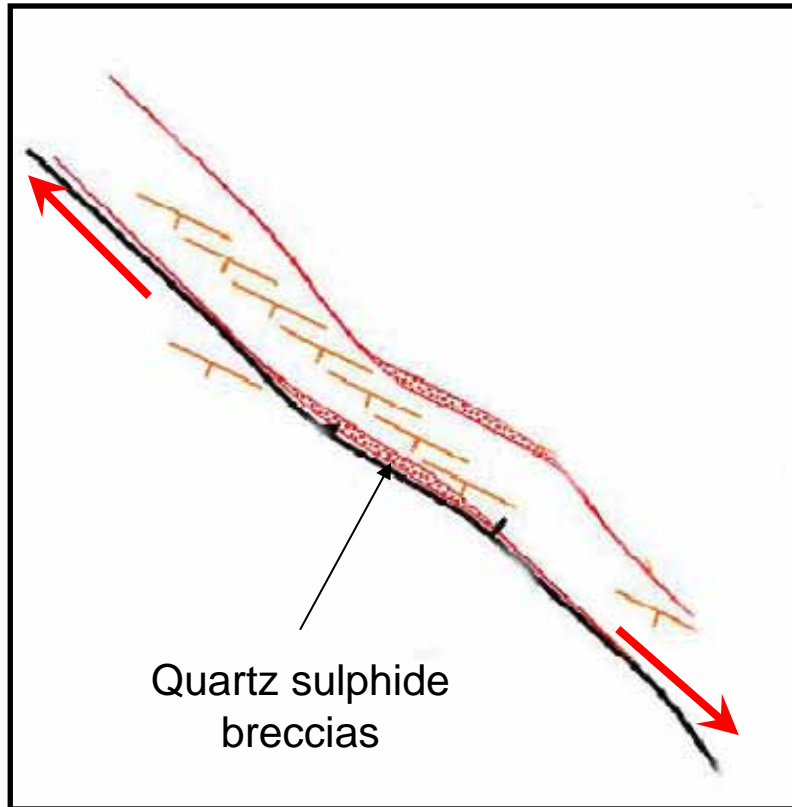
E46D3146 163.8m
18.6 g/t Au

E46D3146 168.1m
3.67 g/t Au

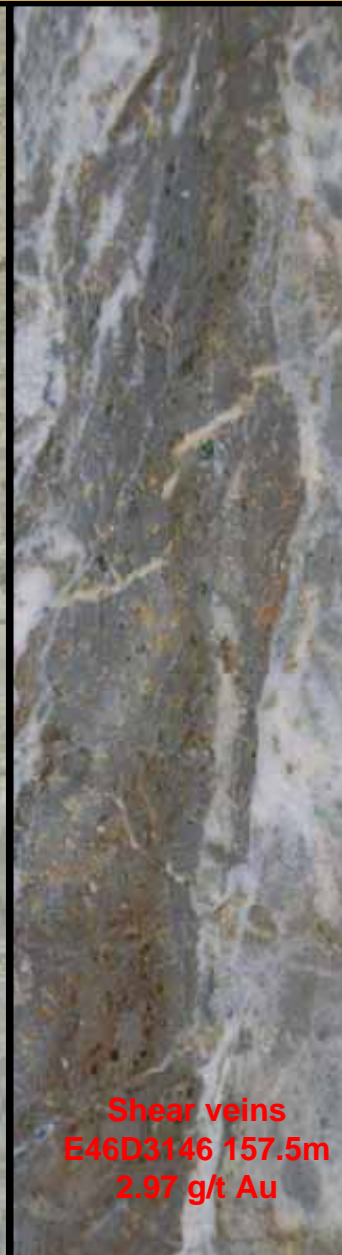
Shear Zone Lode Style



BARRICK



**Quartz sulphide
breccia
E42D1061 168.5m
1.18 g/t Au**



**Shear veins
E46D3146 157.5m
2.97 g/t Au**



**Dilational jog
within shear zone
9.12 g/t Au**

Vein Paragenesis



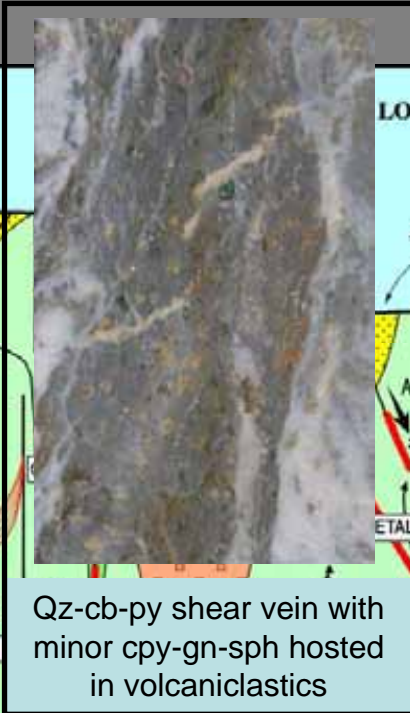
BARRICK



Act-ab-mgt-chl alteration cross cut by qz-ksp-cb



Qz-py±cb vein hosted in act-ab-mgt-chl altered diorite



Qz-cb-py shear vein with minor cpy-gn-sph hosted in volcanoclastics



Late cb-ep vein cut by ep-cb-prehnite veins hosted in diorite

Calc-potassic alteration

Quartz-sulphide event

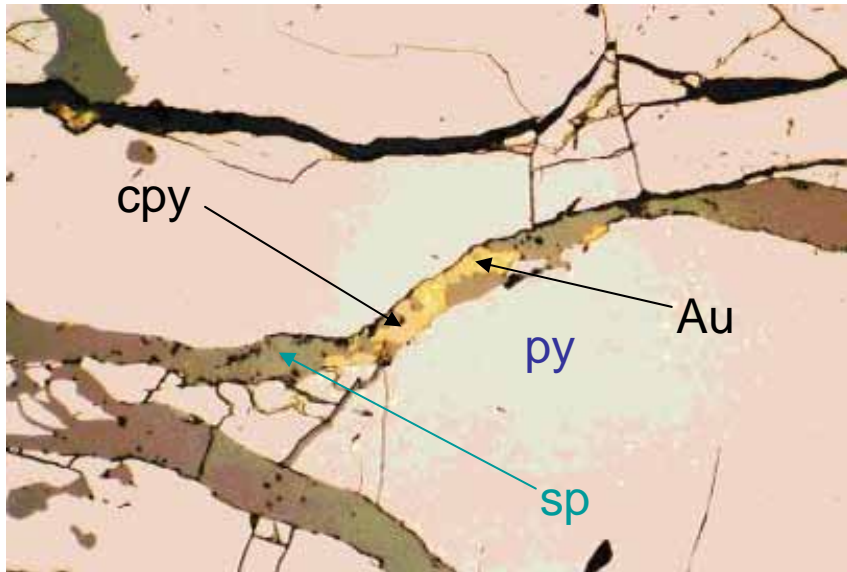
Carbonate base metal sulphide event

Epithermal association

High Temperature

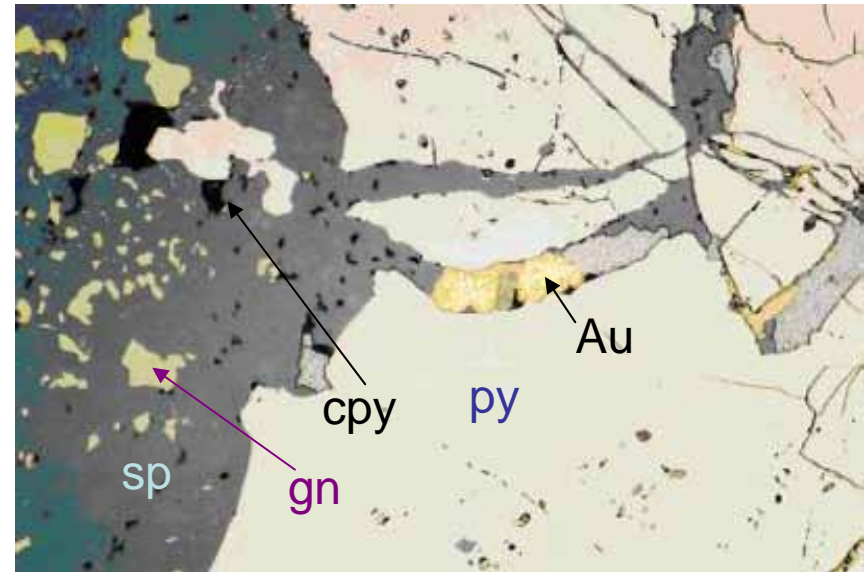
Sheeted veins

FLUIDS
 Rising mineralised magmatic fluid
 Circulating meteoric dominant water
 B - bicarbonate
 O - oxygenated
 Rising volatiles



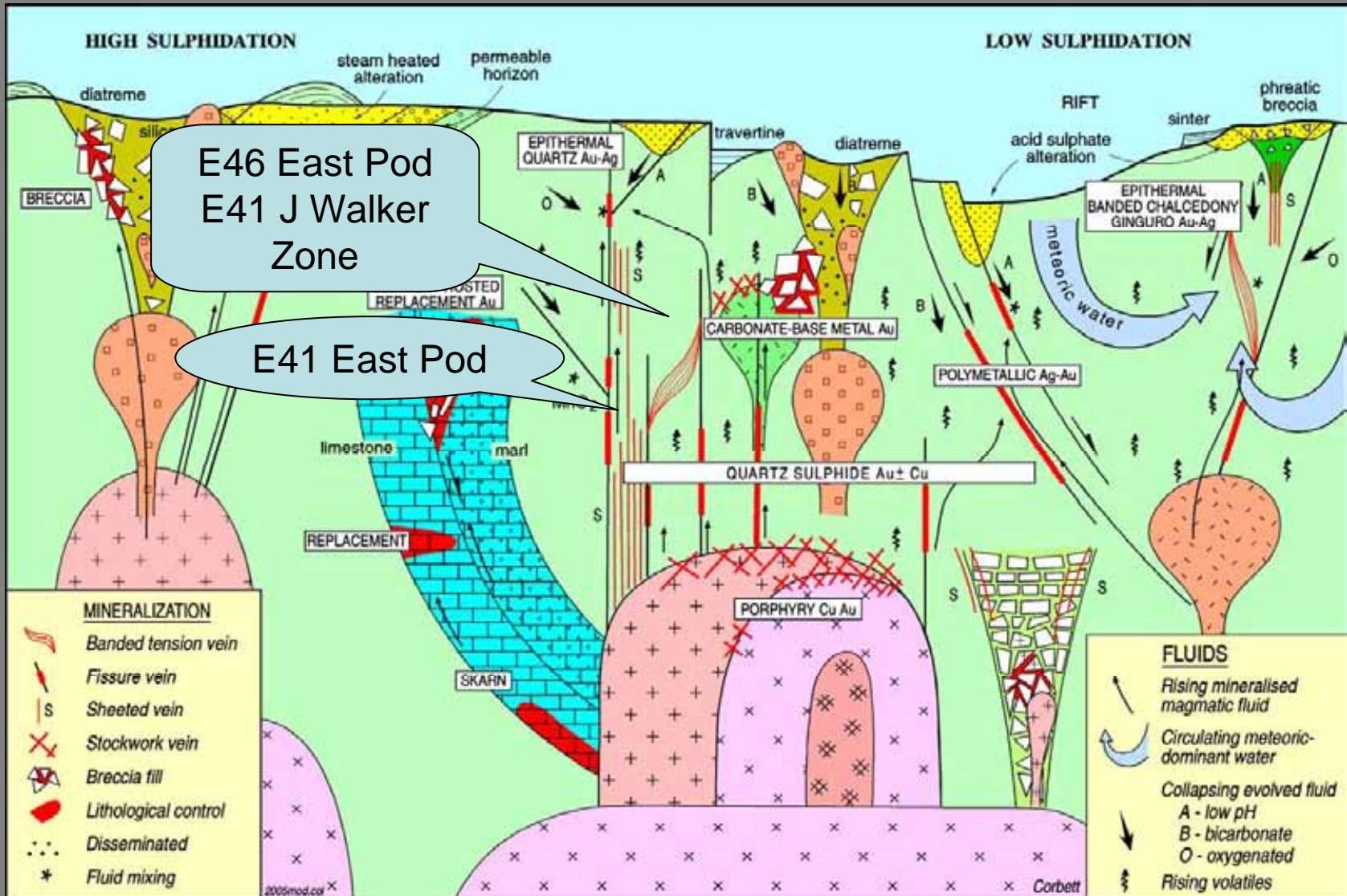
Dilational vein

Fractured pyrite (creamy) containing vein fillings of sphalerite (mid-grey), gold (bright golden yellow) and a little chalcopyrite (yellow, less bright than gold). Plane polarised reflected light, field of view 0.25 mm across.



Quartz sulphide breccia

Fractured pyrite (creamy) invaded by sphalerite (mid-grey) with chalcopyrite inclusions, galena (pale grey) and gold (golden yellow). Largest gold grain is 25 μm across. Plane polarised reflected light, field of view 0.25 mm across.





BARRICK



Questions?