

The Tritton Copper Project: Three New Orebodies

Mike Erceg

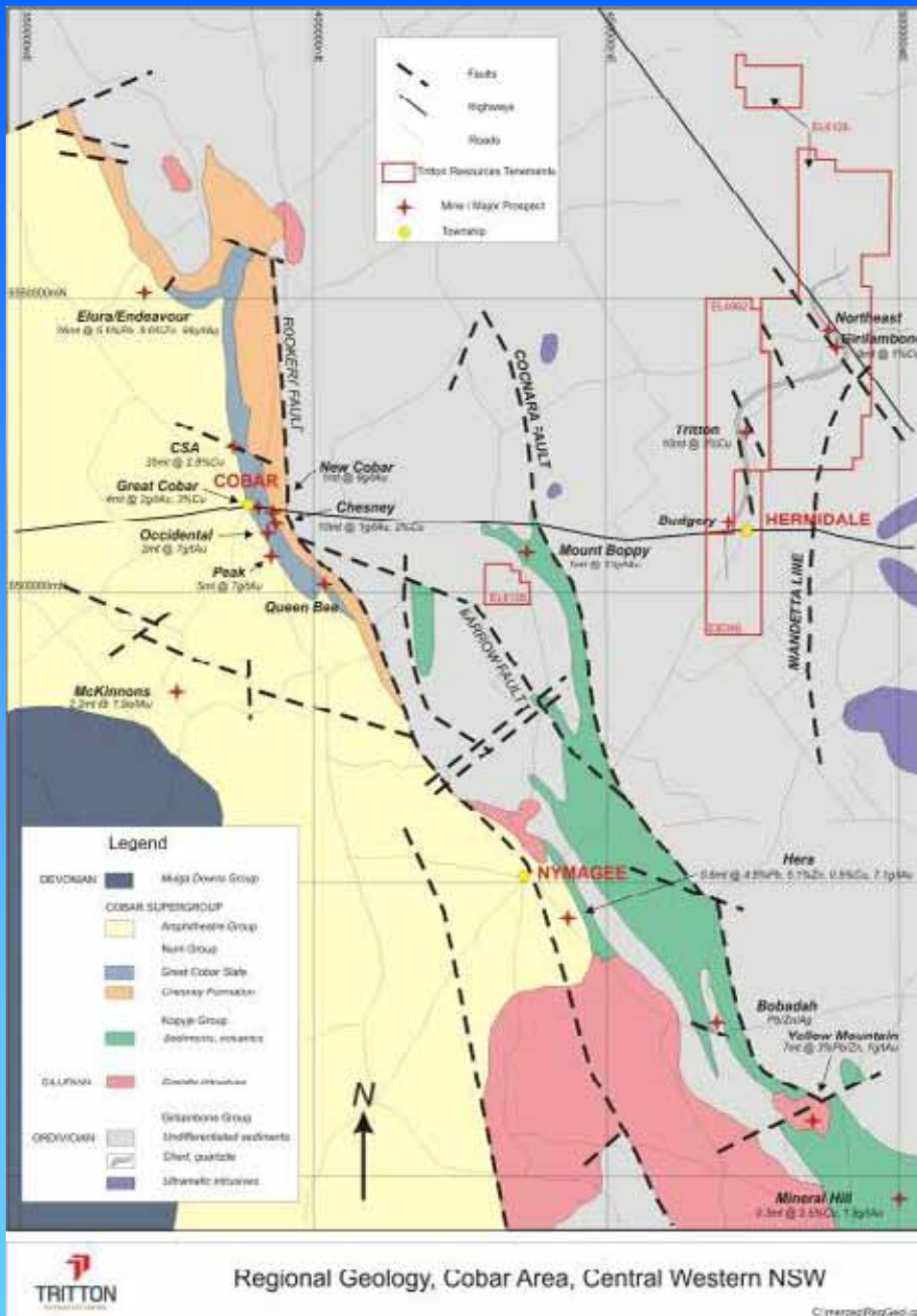
SMEDG-AIG-DPI
Mines & Wines Conference
Orange, September 2007

Project Location



Tritton Mine Location

Regional Geology





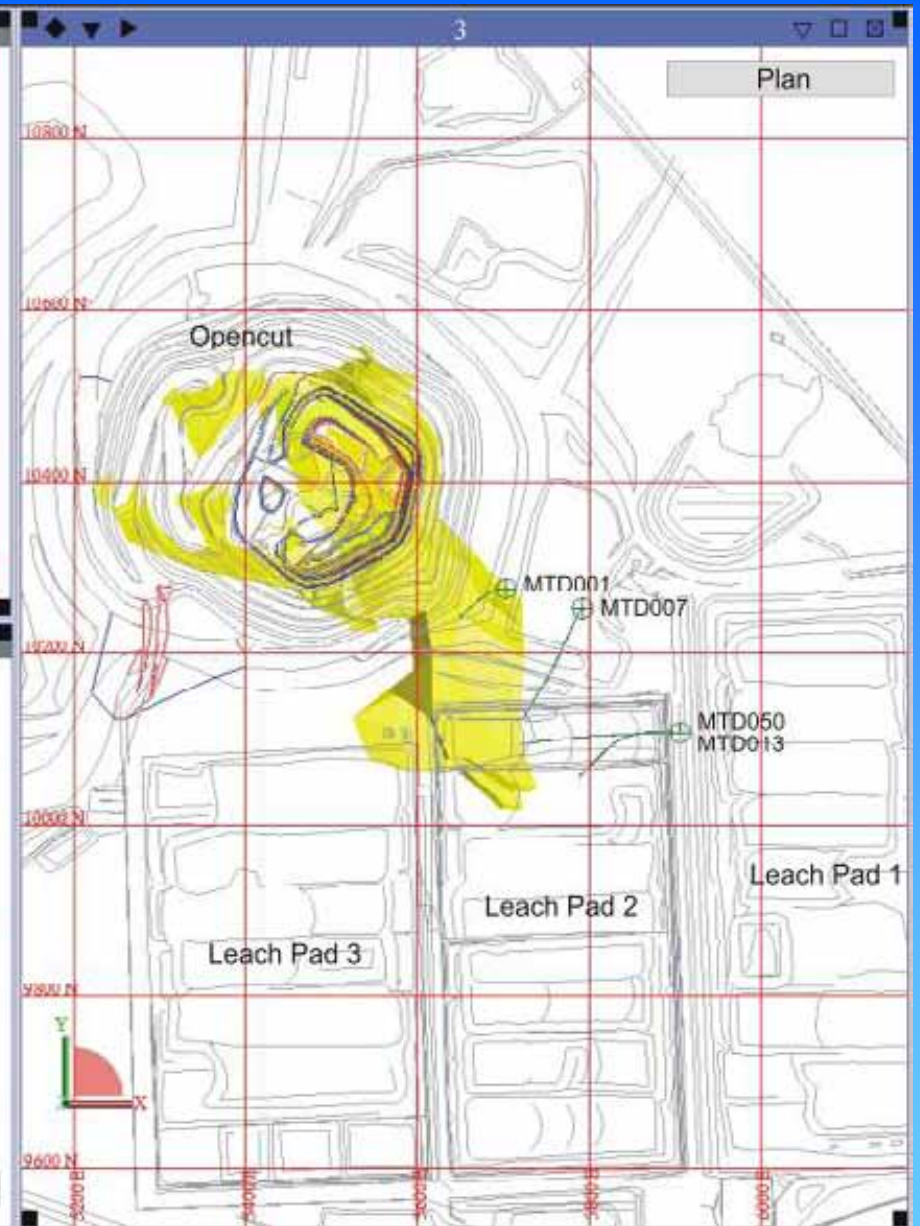
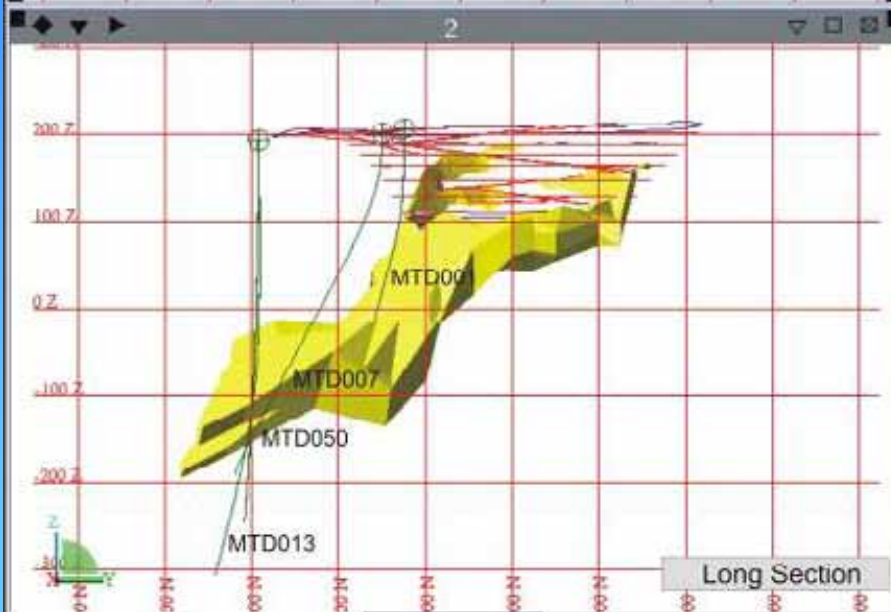
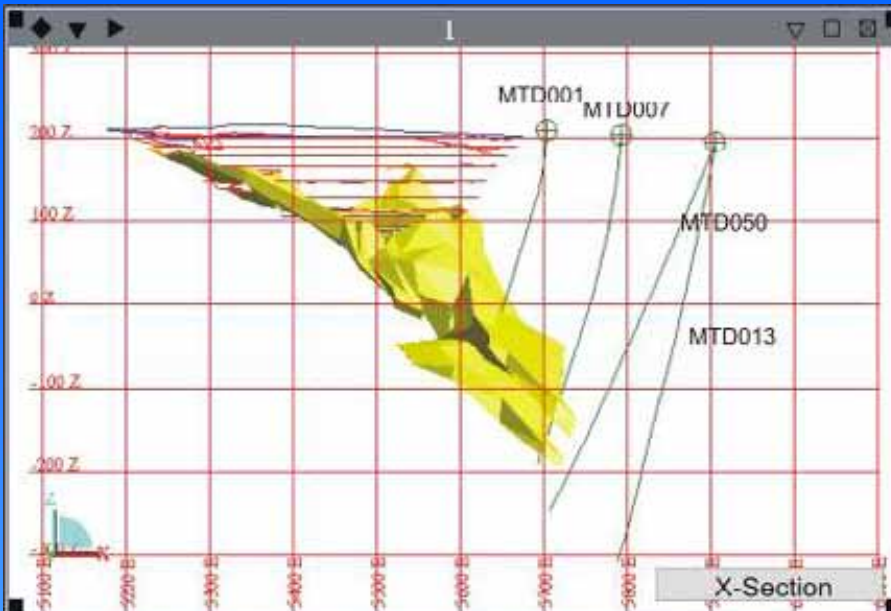
Murrawombie Project





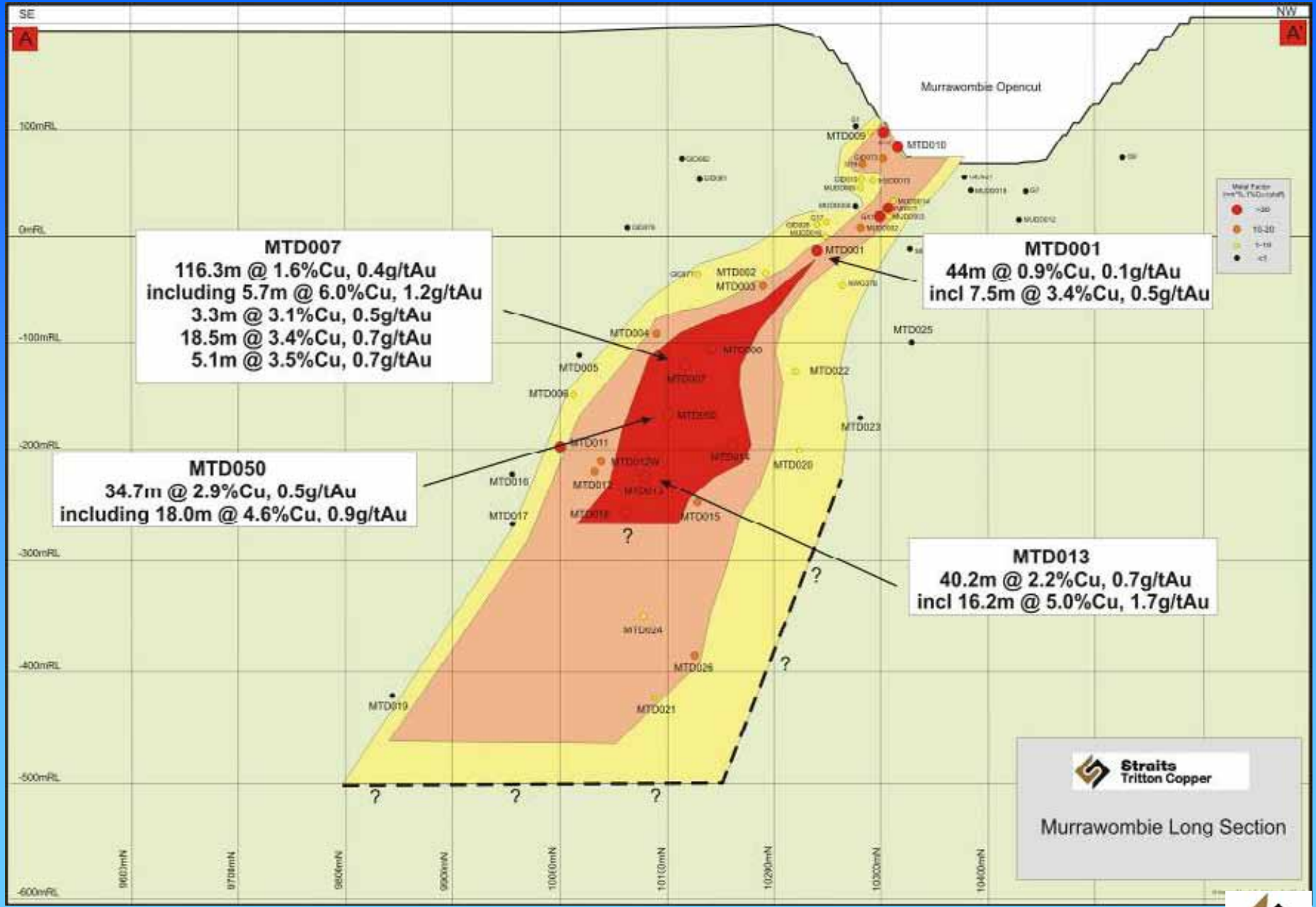
Murrawombie Pit





Murrawombie Project







MTD001 7.5m @ 3.4%Cu and 0.5g/tAu





MTD013
16.2m @ 5.0%Cu and 1.7g/tAu





Status: Res Definition Drilling - Feasibility



Murrawombie

Larsens

Double Tanks

Hartmans

Northeast



Girilambone North (ML1383) Prospects



North East Opencut

proven reserves
967,600t @ 0.82%Cu

tofr (approx)

100mRL

0mRL

-100mRL

-200mRL



NGL = Seistrut DDH (~1976)
NEDT = Triton DDH (2006)

NEDT007
10m @ 4.0% Cu

North East Project
Longsection April 2007

22900N

23000N

23100N

23200N

23300N

23400N

23500N

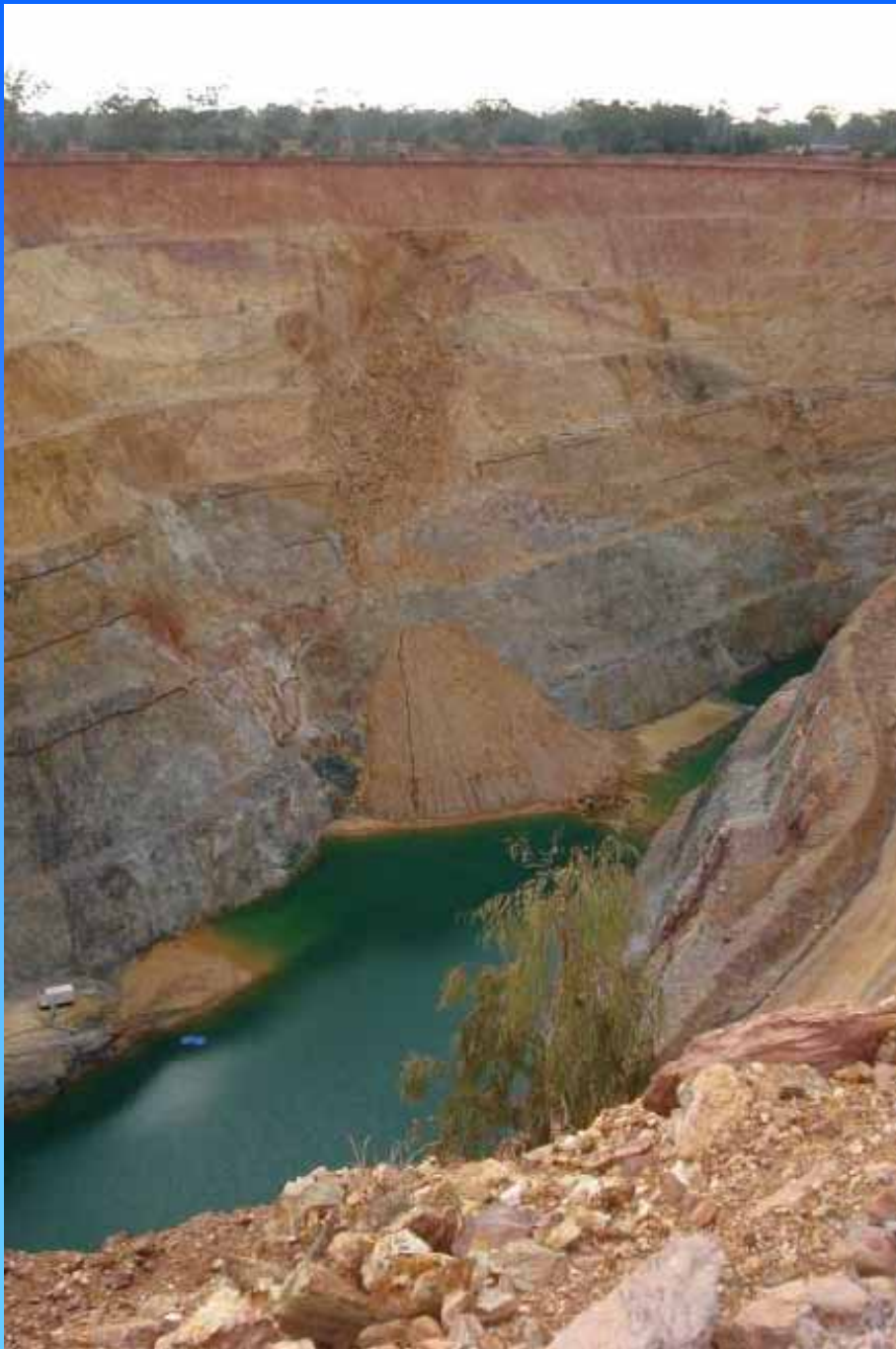
© 2007 Straits Triton Copper Ltd. All rights reserved.





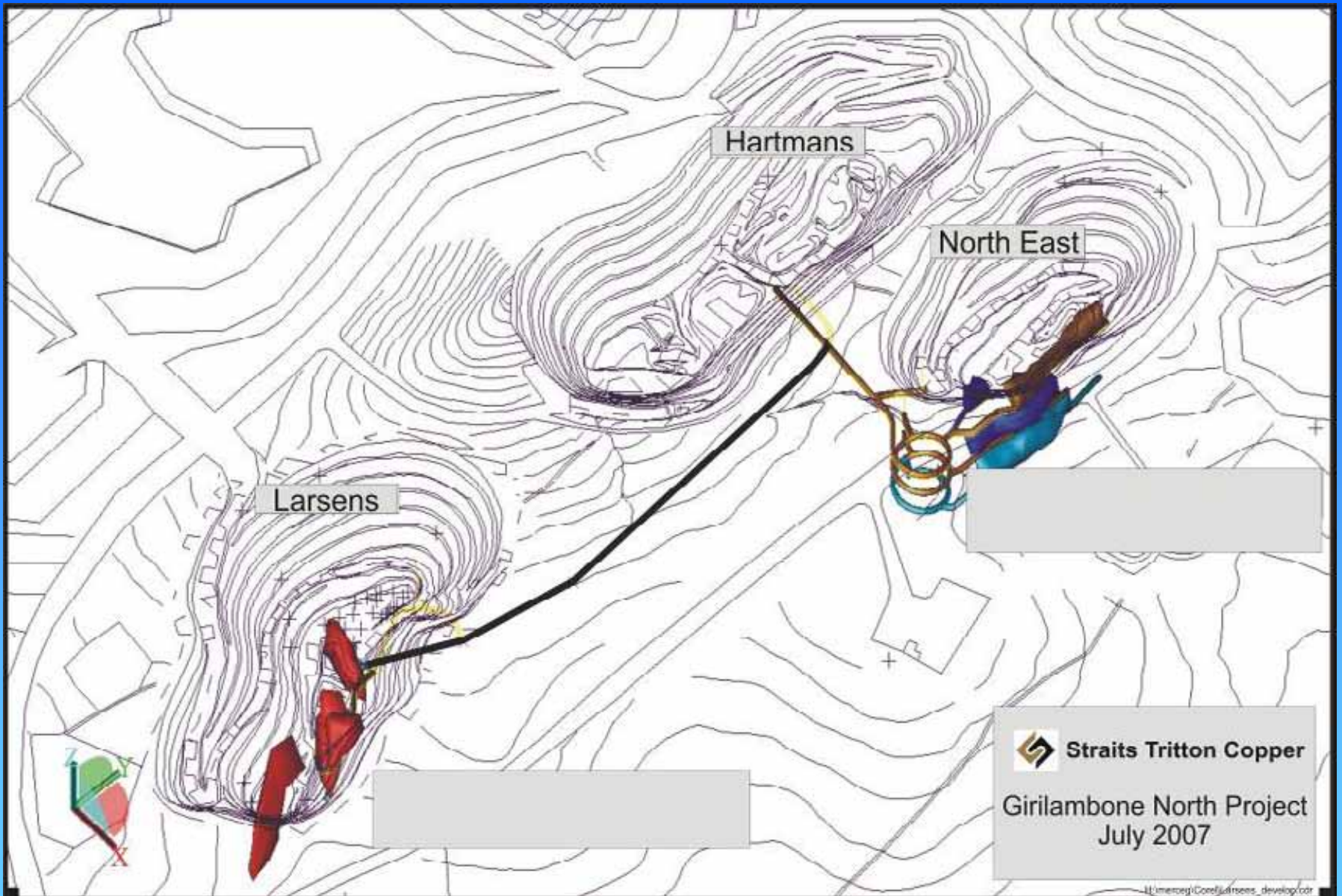
NEDT007
10.0m @ 4.0%Cu





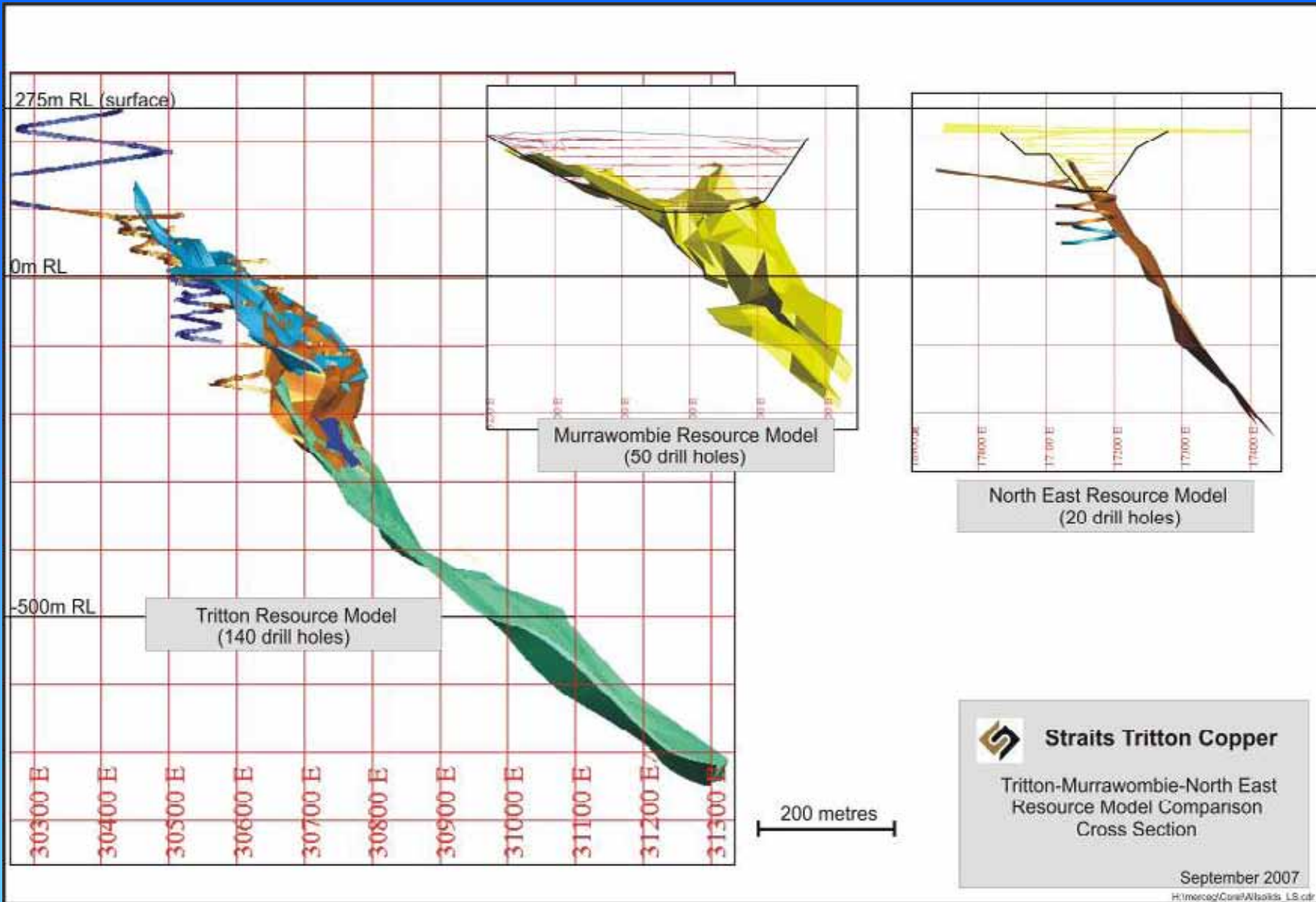
Larsens Pit





Project Status: Development Commencing 1 October





Orebody Geometry





The End

