

MINES and WINES 2007

“A Vintage Year for the Tasmanides!”

**Sydney Mineral Exploration Discussion Group
Australian Institute of Geoscientists
NSW Department of Primary Industries**



Welcome to the time of the hockey sticks!

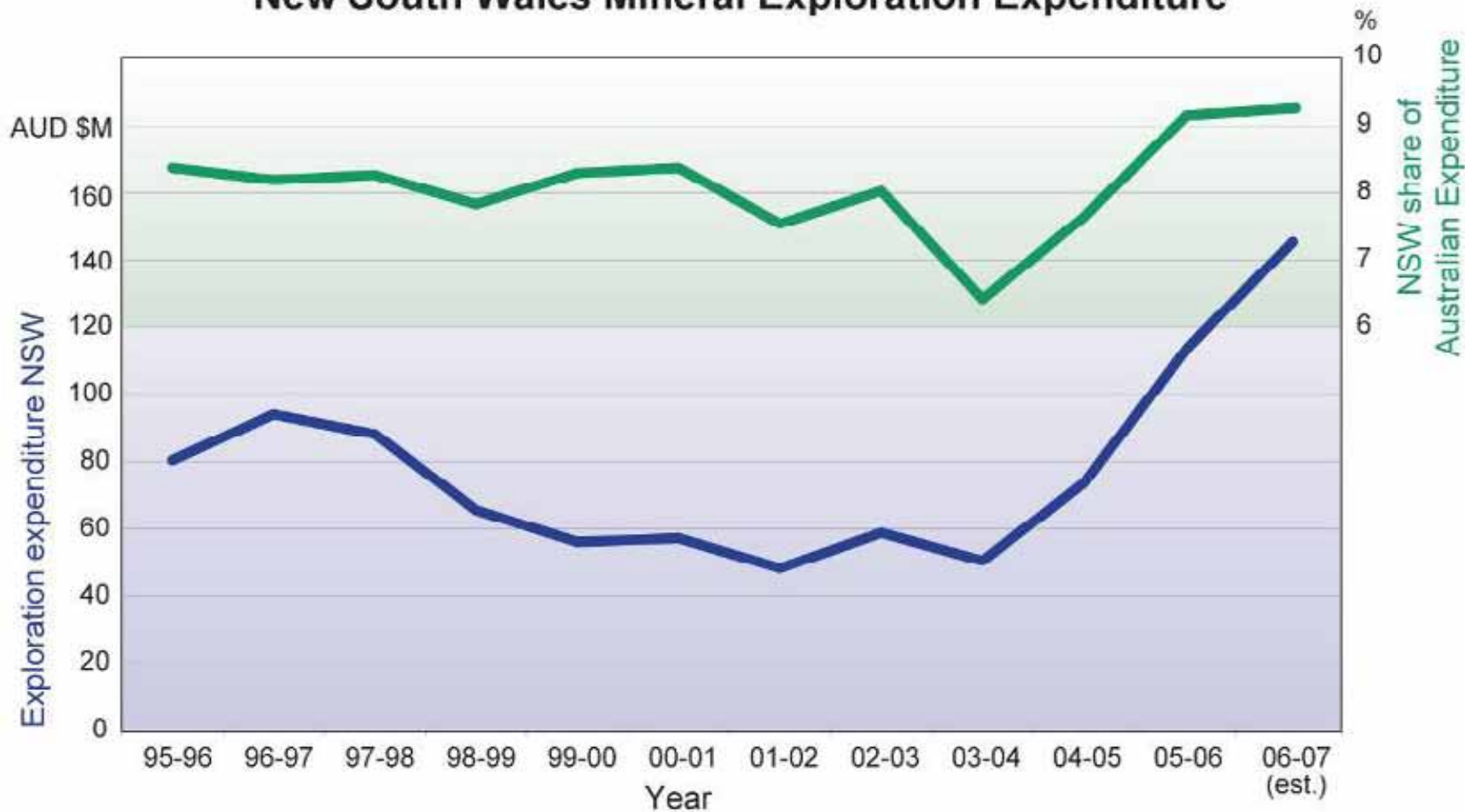
Australia 2006/07

Exploration - \$1700 million

Mineral exports - \$106.5 billion

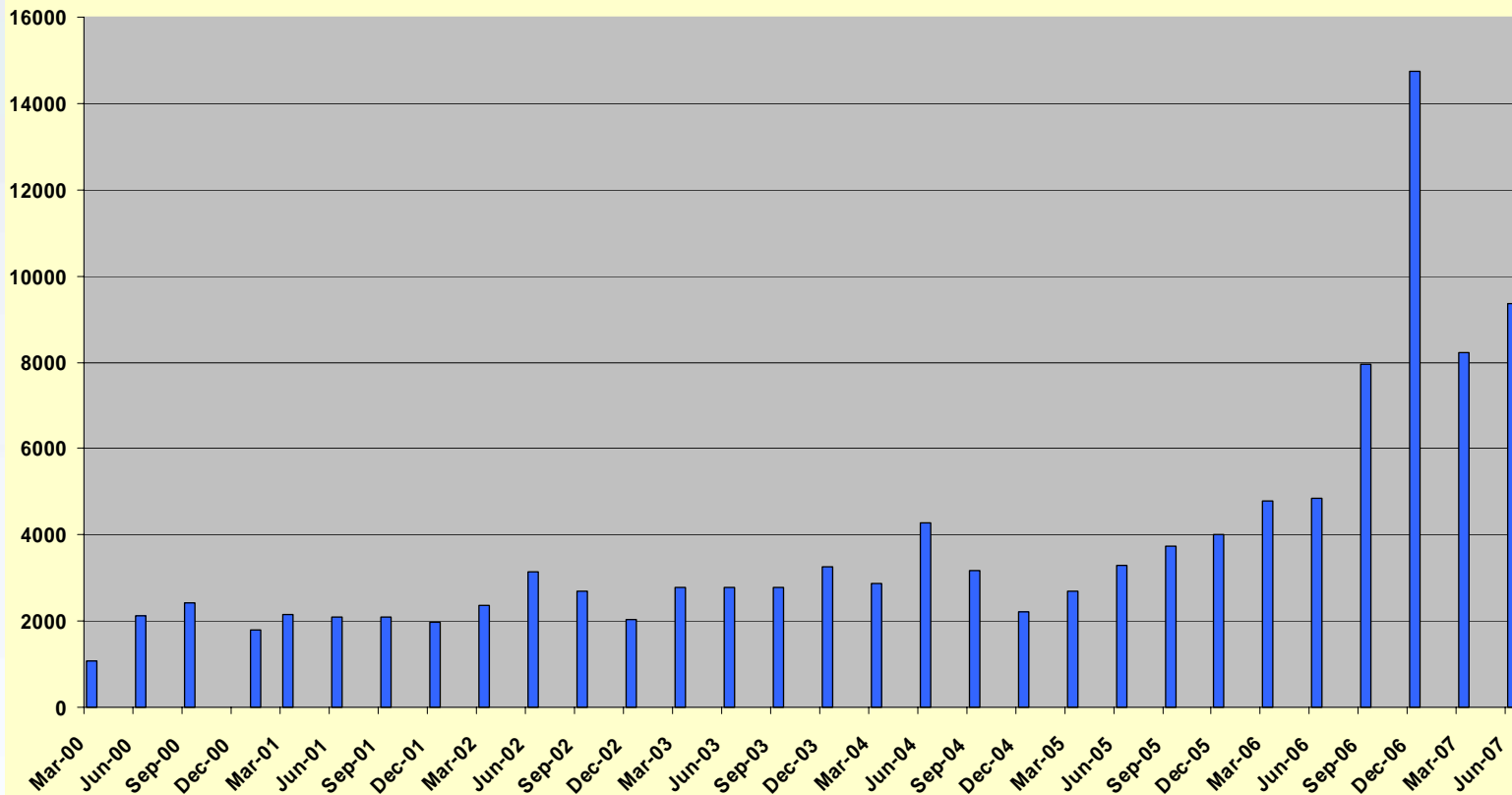


New South Wales Mineral Exploration Expenditure



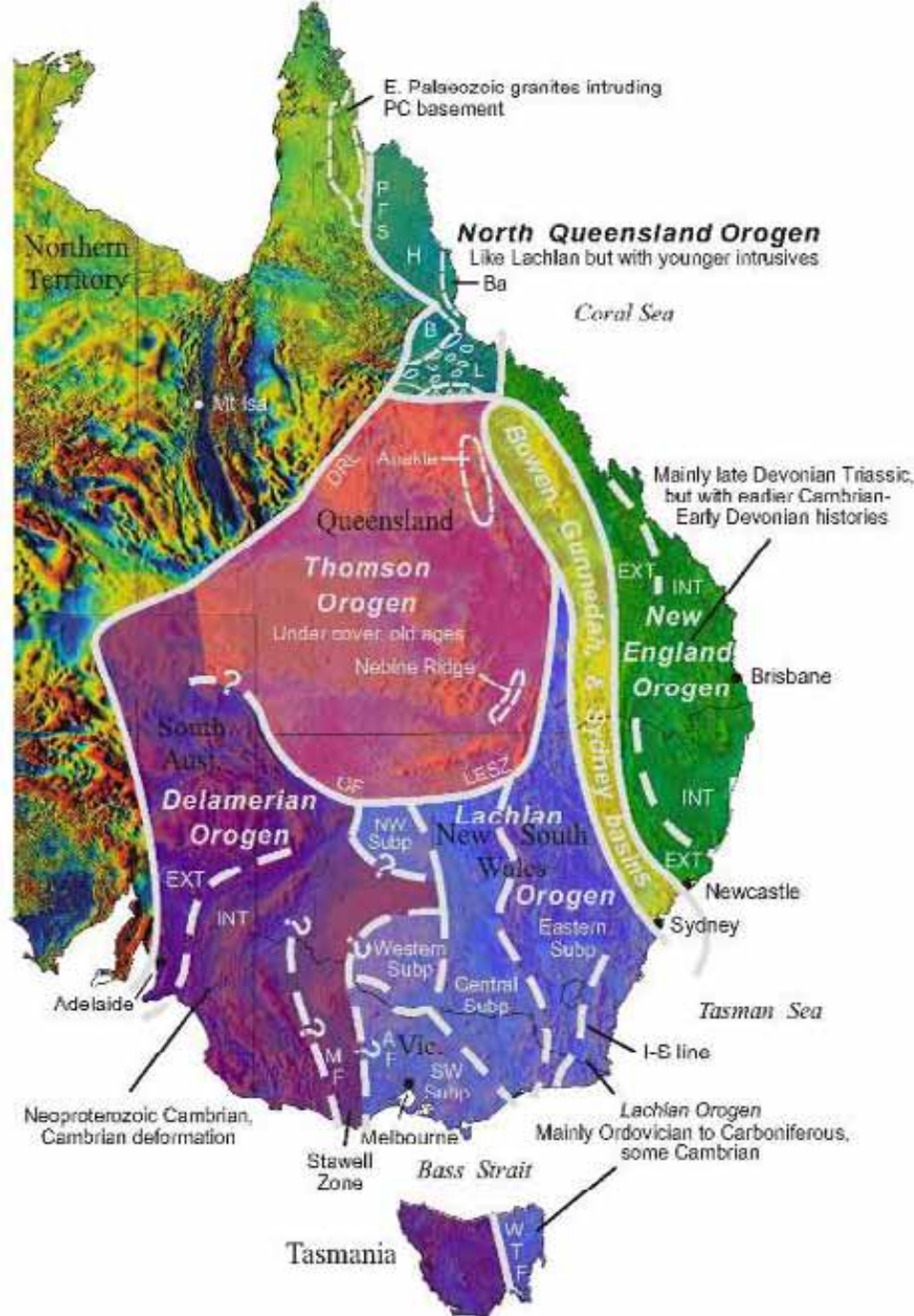
DIGS WEB VISITS

MARCH 2000 - JUNE 2007, MEASURED QUARTERLY



NSW Gold Production 1851-2007





NEW FRONTIERS NEW OPPORTUNITIES



DISCOVERY
2000 1994 – 2000 (\$35 million)

EXPLORATION
NSW 2000 – 2007 (\$30 million)

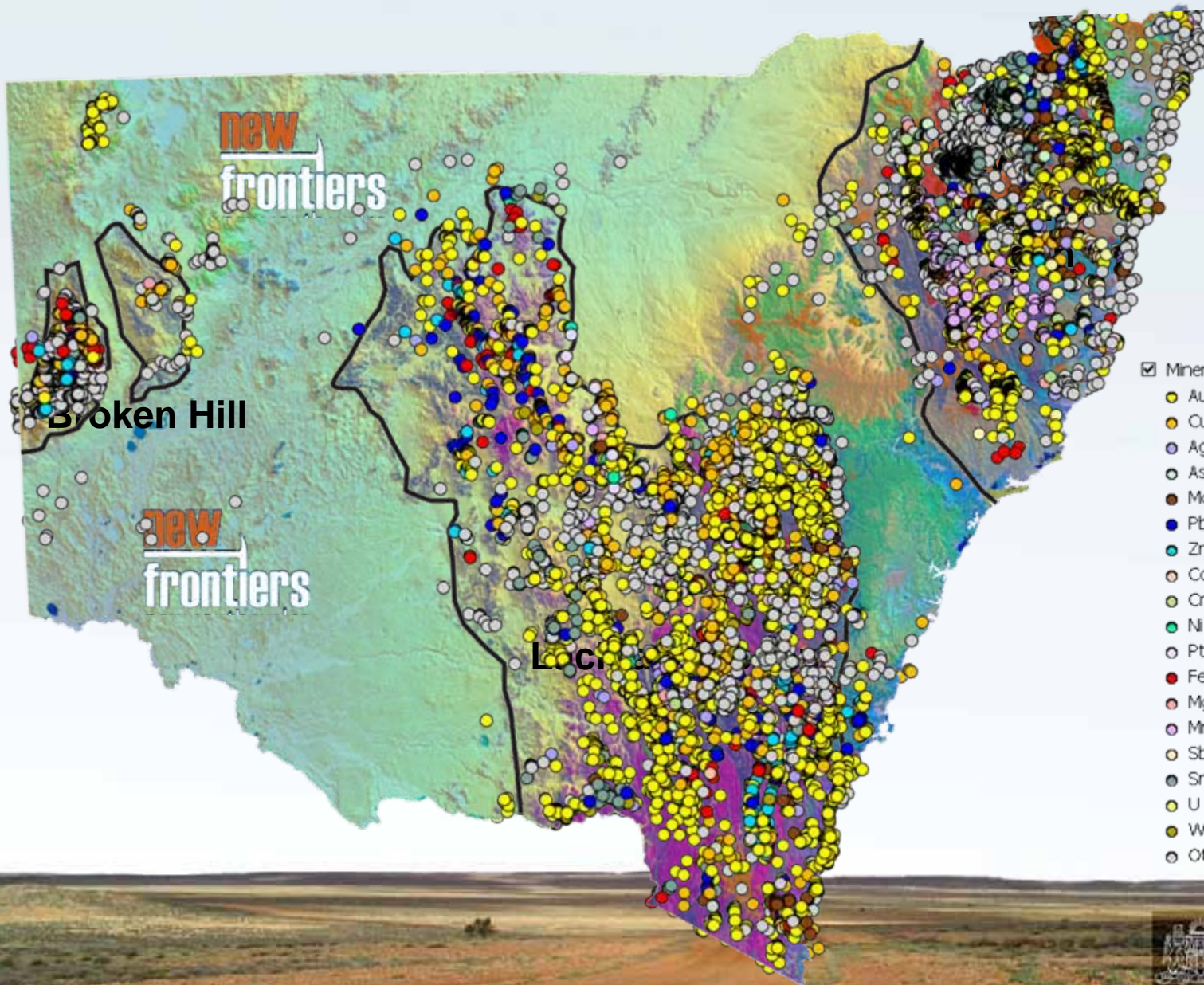
new
frontiers
new south wales 2006 – 2008 (\$8 million)



Focus on areas under cover & underexplored



NEW FRONTIERS NEW OPPORTUNITIES



Mineral Occurrences (METMIN)

- Au
- Cu
- Ag
- As
- Mo
- Pb
- Zn
- Co
- Cr
- Ni
- Pt
- Fe
- Mg
- Mn
- Sb
- Sn
- U
- W
- Other



NSW DEPARTMENT OF
PRIMARY INDUSTRIES