

# Practical aeromagnetic interpretation for geologists

Workshop in better targeting from magnetics

10 October 2002, Sydney

An exercise in magnetic interpretation for geologists by geologists experienced in magnetic interpretation.

- Reduce your risk of targeting under cover
- Target “blind” brownfields opportunities more effectively
- Extract more geological value from expensive geophysical surveys
- Increase your knowledge about magnetics in order to understand your geophysical analysis



Geoscientists, Dr Stuart Munroe and Graham Butt, have teamed up to offer a one-day workshop offering practical advice and training in the tools for visualising, integrating and interpreting geophysical and geological data.

**Dates:** 10 October 2002, 9am - 5pm  
**Venue:** Shore Church of England School  
Blue Street, North Sydney

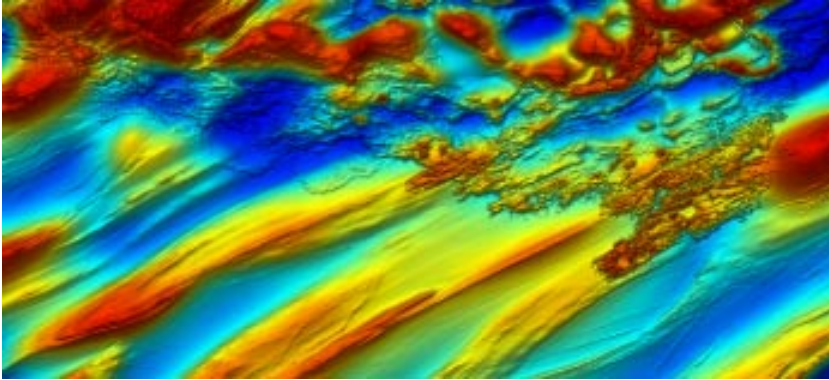
Limited to 30 places  
•  
Pay by 10 September for \$110 earlybird discount



[www.srk.com.au](http://www.srk.com.au)



[www.encom.com.au](http://www.encom.com.au)



## Presenters

### **Dr Stuart Munroe - SRK Consulting**

Stuart is a leading structural geologist who has been interpreting and targeting from integrated geological and geophysical data, particularly in covered terranes. He has been applying these principles to many Australian and international projects through his work with SRK.

### **Mr Graham Butt - Encom Technology**

Graham is an experienced Australian geophysicist with 29 years of involvement in the application and interpretation of airborne geophysical data in a wide range of exploration settings.



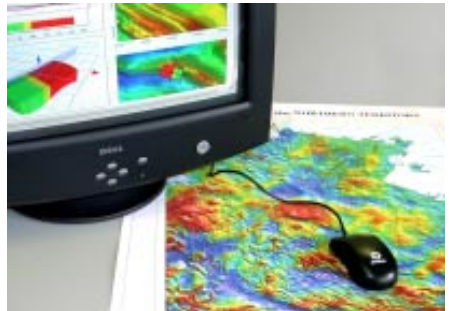
## What this workshop will cover

- The geological basis for targeting from magnetics
- The basic principles simply explained and clearly illustrated
- Visualising the geology - processing for optimum geological effect
- Turning geophysics into predictive geological maps and cross-sections
- Some new tools for visualising, integrating and interpreting more effectively
- What should my target look like? Simple and effective magnetic modelling

## Case studies

Key principles will be illustrated with case studies, and one of these will be used for an interactive exercise using a combination of computer tools and manual procedures.

The exercise is based on an Fe-oxide Cu-Au deposit with lots of “bumps” but few genuine targets. You will learn how to surf through the bumps in conjunction with other regional datasets.



## Who should attend

The workshop is designed for geologists who want to improve their understanding of magnetics for better geophysical analysis.

# Practical aeromagnetic interpretation for geologists

---

## Workshop in better targeting from magnetics

**Dates:** 10 October 2002, 9am - 5pm

**Venue:** Shore Church of England School  
Blue Street, North Sydney

**Cost:** \$550\* - Individual registration  
\$440\* - Earlybird price for payments received by  
10 September 2002

## Registration

Workshop size is limited to 30, so book early to reserve your place.

**Participants will require a laptop computer.** Specifications are listed on the registration form.

## Price includes

- A CD containing all workshop notes and exercises
- You will work on-screen during the workshop using Encom's exciting new interpretation environment **Encom Profile Analyst**
- A two-month trial licence of Encom Profile Analyst
- A test drive of Encom's brand new **Encom QuickMag** 3D modelling tool, designed specifically for the geologist

## For more information

please contact: **Graham Butt**

Encom Technology

Email: [grahamb@encom.com.au](mailto:grahamb@encom.com.au)

Tel +61 2 9957 4117

Fax +61 2 9922 6141

**Stuart Munroe**

SRK Consulting

Email: [smunroe@srk.com](mailto:smunroe@srk.com)

Tel +61 2 9350 0130

Fax +61 2 9250 0131

or visit: **[www.encom.com.au](http://www.encom.com.au)**

# Registration form

## General Information

To take advantage of this training opportunity, please complete the registration form below and fax it to Encom Technology in Sydney on **+61 2 9922 6141** or email **info@encom.com.au** for more information. Completed registration forms and payment must be received **no later than Friday 4 October, 2002**. Withdrawals after 4 October 2002 will incur a 50% cancellation fee. Encom and SRK reserve the right to cancel the course should participation fall below a sustainable level.

## Course Dates & Pricing

- Practical aeromagnetic interpretation for geologists      \$440\*/person  
Early bird registration
- Practical aeromagnetic interpretation for geologists      \$550\*/person  
Individual registration

## Fax Back Registration Form (fax +61 2 9922 6141)

Name \_\_\_\_\_

Company \_\_\_\_\_

Telephone \_\_\_\_\_ Facsimile \_\_\_\_\_

Postal Address \_\_\_\_\_

Email Address \_\_\_\_\_

## Payment Details

Please find enclosed payment of \$ \_\_\_\_\_ (\*All prices quoted are in Australian dollars and include GST)

Cheque     Visa     Mastercard     American Express     Purchase Order      Expiry Date

Card Number \_\_\_\_\_ / \_\_\_\_\_ / \_\_\_\_\_ / \_\_\_\_\_ / \_\_\_\_\_

Cardholder Name \_\_\_\_\_

Signature \_\_\_\_\_

### Notes

1. Receipt of registration will be acknowledged immediately. Additional information regarding venue will be sent at a later date.
2. Course notes and attendance certificates will be provided to each participant.
3. Occasionally circumstances may require courses to be cancelled or postponed. Encom Technology disclaims responsibility for consequential losses incurred as a result of changes to course schedules. If a course is cancelled, pre-paid registration fees will be refunded in full.

### Computer Specifications

IBM PC compatible pentium based CPU 200MHz or higher, 128Mb memory and 1Gb spare disk space.