



GEOLOGICAL SURVEY OF NSW SMEDG SHOWCASE | NOVEMBER 2016

A Precompetitive Data Sunrise - “Sunset Clause” 2021

What is the “Sunset Clause”?

- In the previous Mining Regulation (2012) under the Mining Act (1992), a clause existed (Clause 58, Part D) that allowed company reports to be kept confidential for an extended period of time.

58 Confidentiality of reports

- (1) The following reports that have been lodged with the Director-General under this Division are to be kept confidential:
 - (a) annual exploration reports,
 - (b) renewal justification statements in respect of the information referred to in clause 57 (1) (c) (i) and (ii),
 - (c) geophysical survey results reports.
- (2) A report must be kept confidential:
 - (a) for the period during which the authority to which the report relates is in force, and
 - (b) if the report is lodged in relation to an exploration licence—for the period during which any assessment lease or mining lease subsequently granted to the same person (or to a nominee of that person) in respect of the same land and mineral is in force.
- (3) Subclause (2) continues to apply to a report if an authority referred to in that subclause is subsequently transferred to another person.
- (4) The Minister may extend the period during which a report is to be kept confidential.

What is the “Sunset Clause”?

- On 1 March 2016 that clause in the Mining Regulation (2016) was amended to include a 5 year “Sunset Clause” on any confidential company report.

64 Confidentiality of reports (Former clause 58D of 2010 Reg)

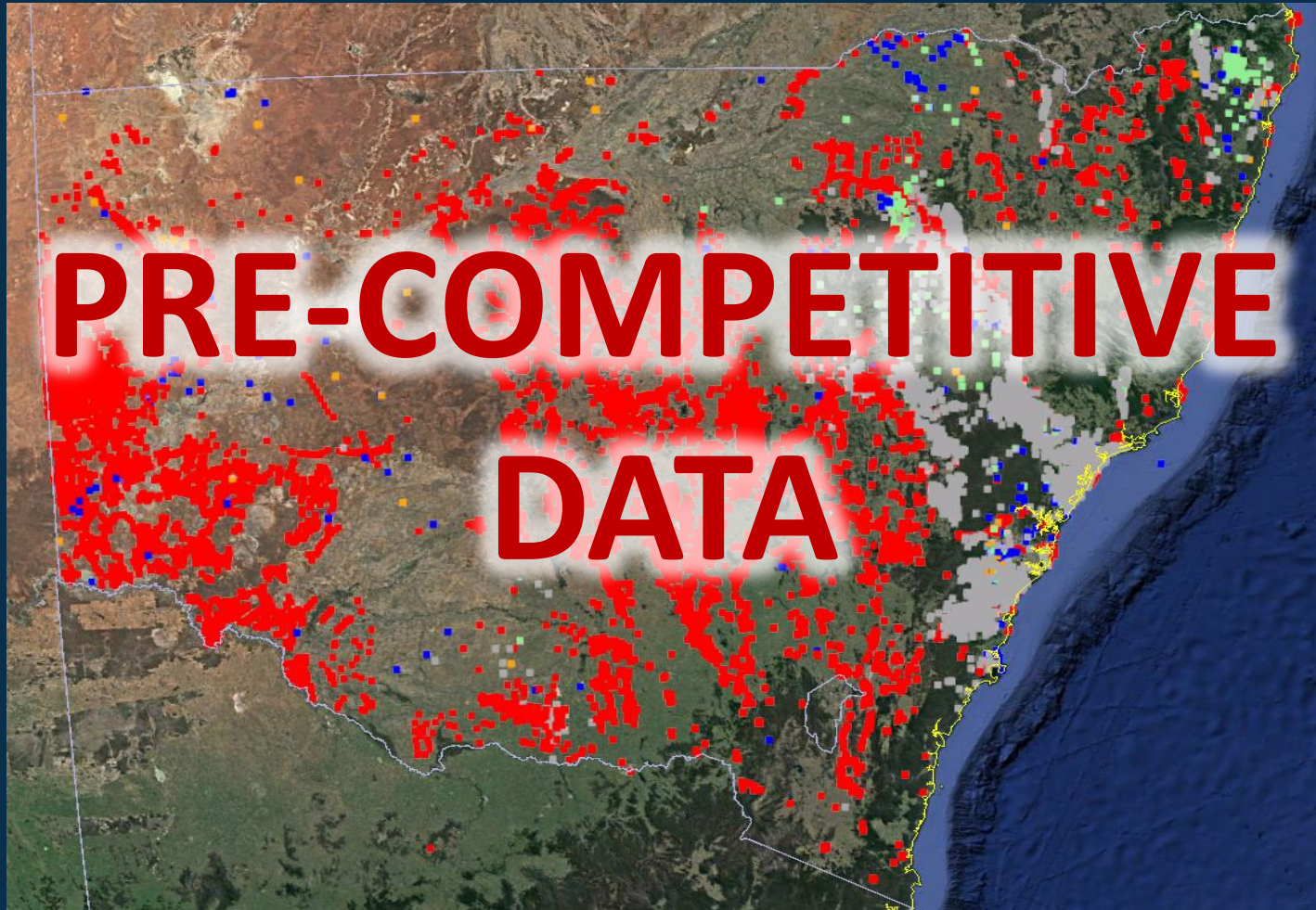
- (1) For the purposes of section 163C (2) (c) of the Act, reports lodged with the Secretary under clause 59 must not be disclosed (except as authorised by the Act) during the period for which the authority to which the report relates is in force unless:
 - (a) in the case of a report lodged on or after 1 June 2016—5 years have passed since the lodgment of the report, or
 - (b) in the case of a report lodged before 1 June 2016—5 years have passed since that date.
- (2) Subclause (1) continues to apply to a report if the relevant authority in relation to which a report was made is subsequently transferred to another person.
- (3) This clause does not prevent:
 - (a) any disclosure or publication of a summary of a work program, or
 - (b) the disclosure of reports lodged with the Secretary under clause 59 after the authority to which the report relates ceases to be in force.

What does this mean?

On the 1st of June 2021 confidential company reports that were submitted 5 years (or more) before this date can be made public.



GSNSW's Focus



How will the industry benefit?

- Reports contain exploration findings such as drillhole, drillstring, geochemical and geophysical information
- Information can be extracted to create new or improve existing geoscientific datasets
- New and improved datasets will strengthen NSW's Pre-Competitive geoscience information
- Helps to build a more complete and robust prospectivity model of NSW to help stimulate mineral and petroleum investment in under-explored terranes

What is the current status?

Report Capture*

	Mineral Exploration Reports	Coal Exploration Reports	Total Mineral & Coal Exploration Reports
All Reports in DIGS	37,558	8,544	46,102
Total CONFIDENTIAL Reports	7,013	6,208	13,221
% CONFIDENTIAL Reports	18.67%	72.66%	28.68%

- The majority of submitted confidential reports are already stored as closed files within DIGS

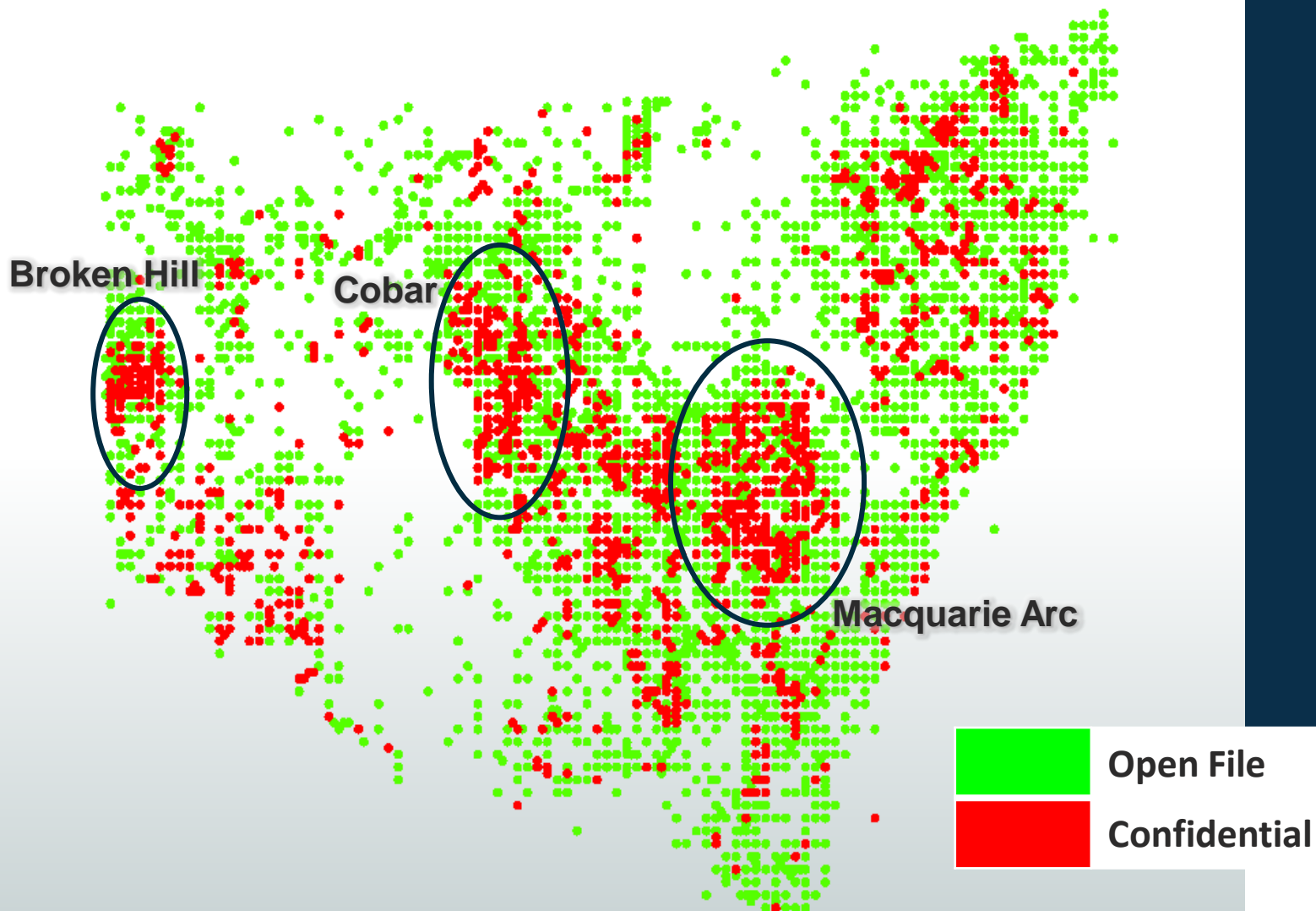
Mineral Data Compilation*

	Mineral Reports	Drill Collar Records	Drill Samples	Surface Samples
All Records	4,446	218,362	4,443,352	1,399,546
Total CONFIDENTIAL Records	1,911	106,249	3,665,076	669,941
% CONFIDENTIAL Records	42.98%	48.66%	82.48%	47.87%

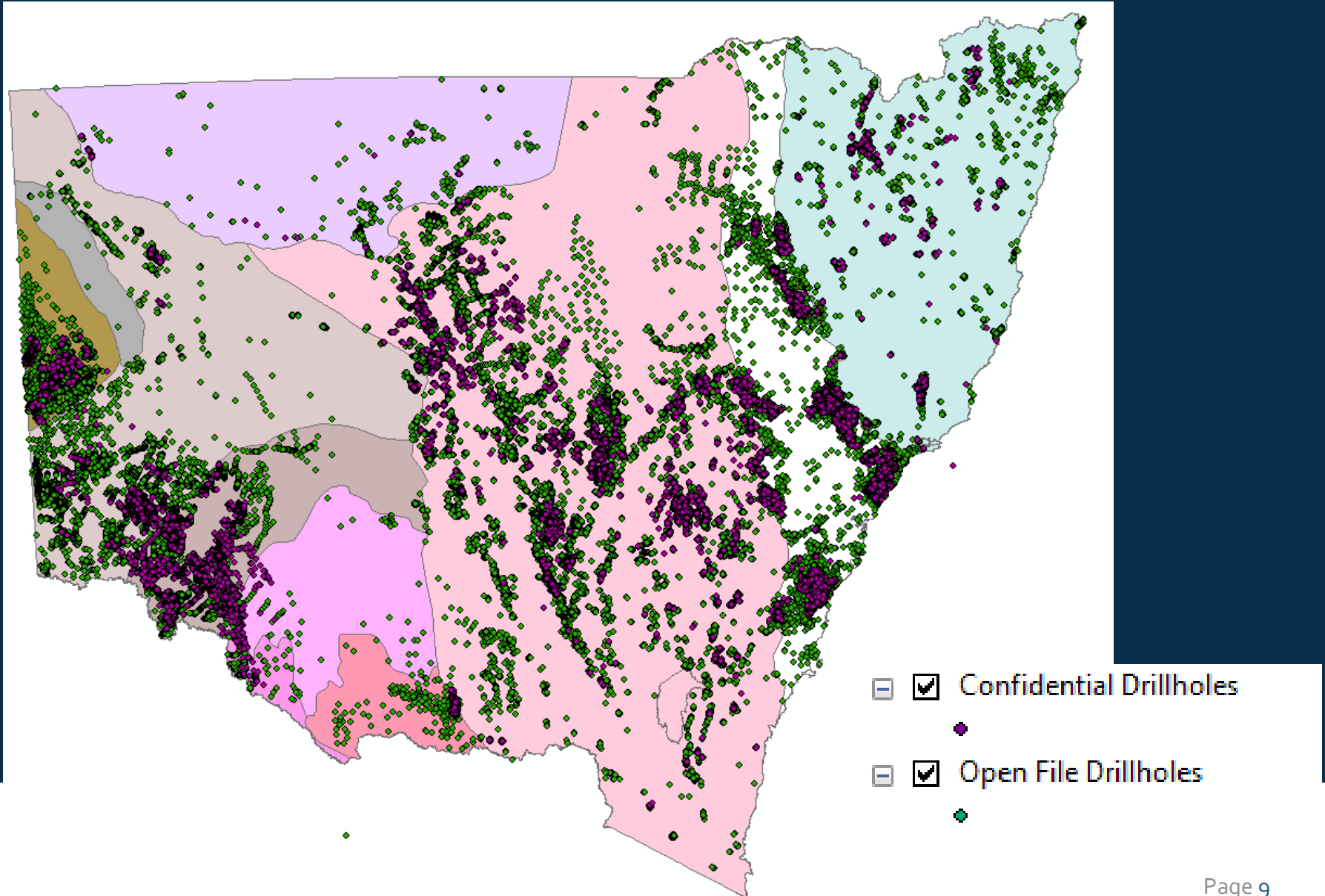
- A large amount of confidential data has already been captured in GSNSW databases as confidential data

**Confidential information is currently not publically available through GSNSW services and systems*

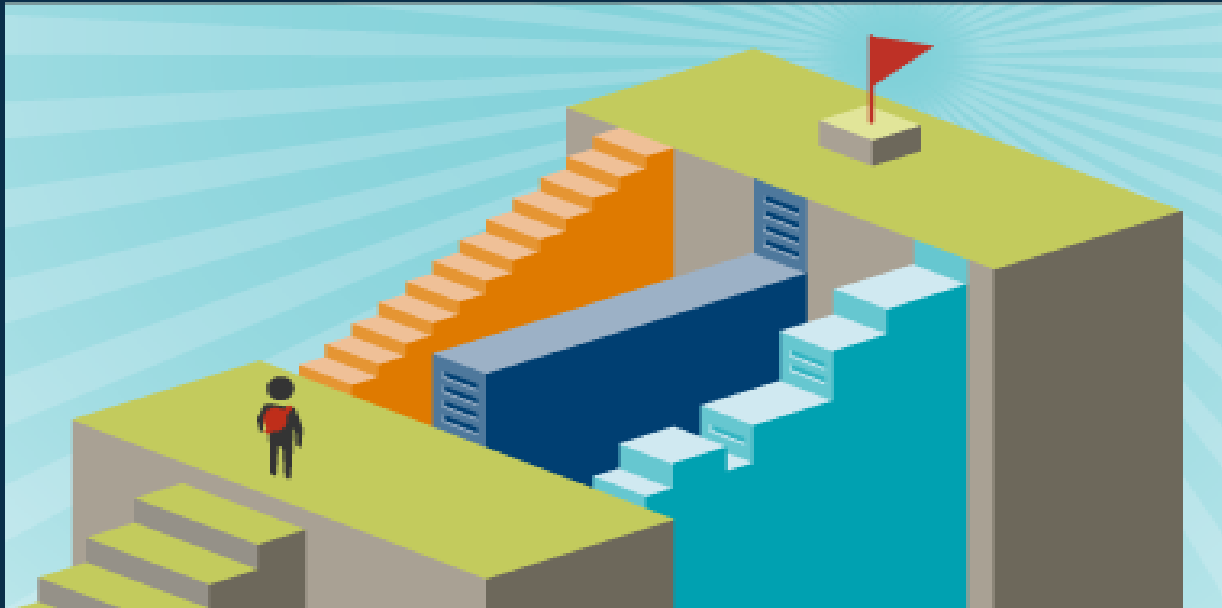
Mineral Exploration Reports



All Captured Drillholes



Options for Release



Basic Release
Coordinated Release

Basic Release Option

Unlock all available information

- Data will be presented in current dataset outputs available through GSNSW systems (DIGS, GDW and GPC)
- Suite and structure of datasets within GDW will remain the same but with new records
- Additional information found in reports will be released via DIGS but will be unstructured and largely aspatial
- Onus is on explorers to interpret and refine the data for their purposes
- Somewhat uncoordinated approach
- Relatively easy to do



Coordinated Release Option

Unlock information with additional dataset products

- Raw reports and data still released through GSNSW systems (DIGS, GDW and GPC)
- Use data extracted from reports data to improve existing datasets
- New products can be created to highlight key geoscientific data
- Released strategically to highlight where new information is available across NSW
- Greater opportunity for explorers to make informed decisions with datasets to encourage investment in under explored areas
- Coordinated approach that needs detailed planning
- Will require additional effort to review, extract and build datasets



Project Planning

- A GSNSW Working Group has been formed to compile a project plan that outlines the scope of work, schedule and resource requirements
- Project plan will then be used as a business case to seek funding from Treasury to procure additional budget and resources
- Internal discussions related to structured dataset products have already commenced
- GSNSW will be actively engaging the industry to inform them of the process and what they see as the opportunities and outputs we should be addressing
 - Industry Forums (eg. SMEDG)
 - Industry Groups (eg. NFILC)

2021: A Pre-Competitive Data Sunrise



Questions, Ideas, Feedback...