



# ***Mendooran Drilling Project*** – potential for basement intercepts under cover

***Daniel Cronin***  
***November 2017***

# ○ Contents

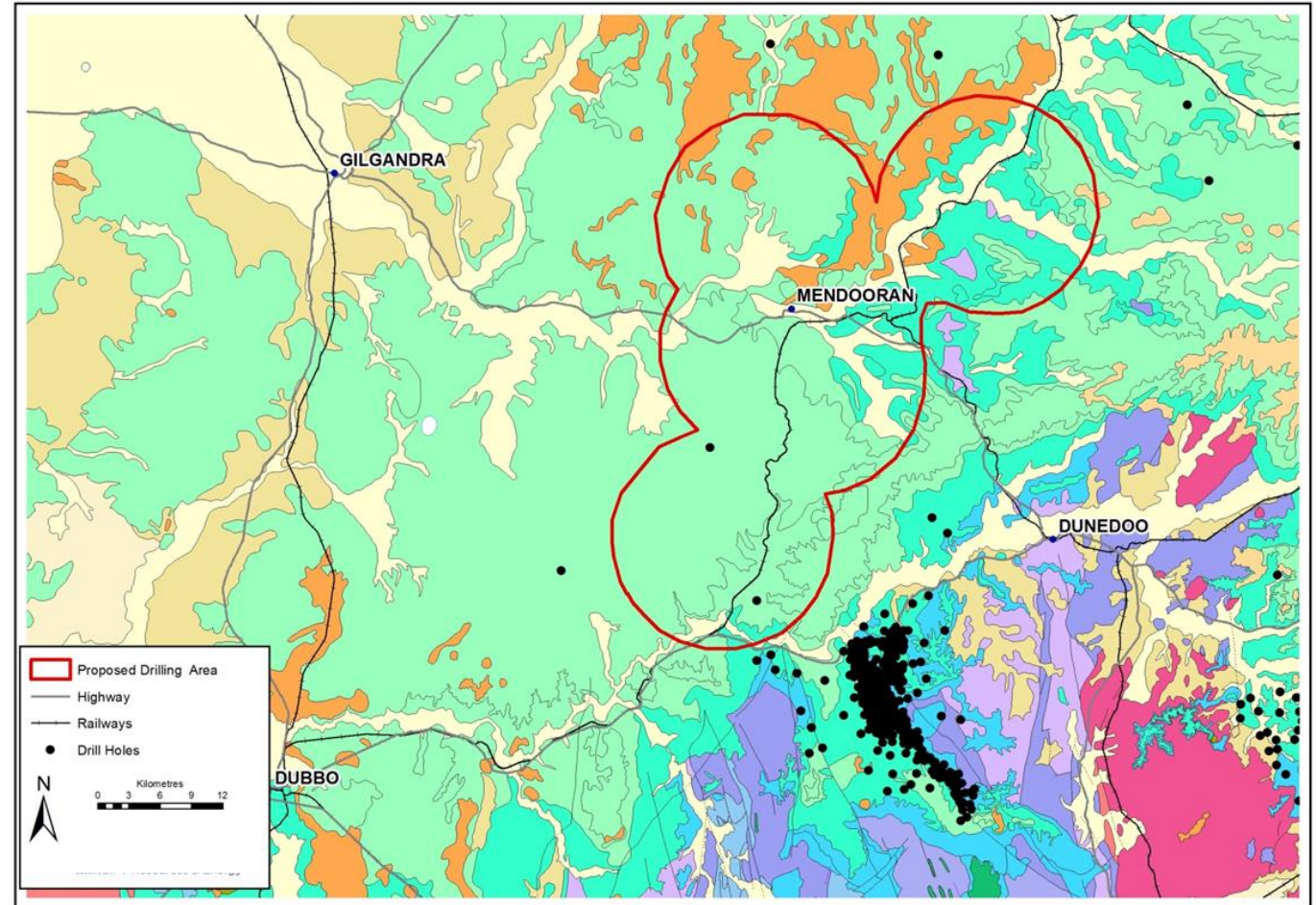
- 1. About the project*
- 2. Background*
- 3. Geological context and drillhole locations*
- 4. Current progress*
- 5. Potential under cover*
- 6. Using coal drilling*

1

# *About the project* ○

## About the Mendooran Drilling Project

- Regional coal resource assessment program
- Five cored holes
- Designed depth range from 250 m to 600 m for approximately 2350 m of drilling
- Coal seams in this area can occur very close to basement therefore each borehole is designed to intercept basement.

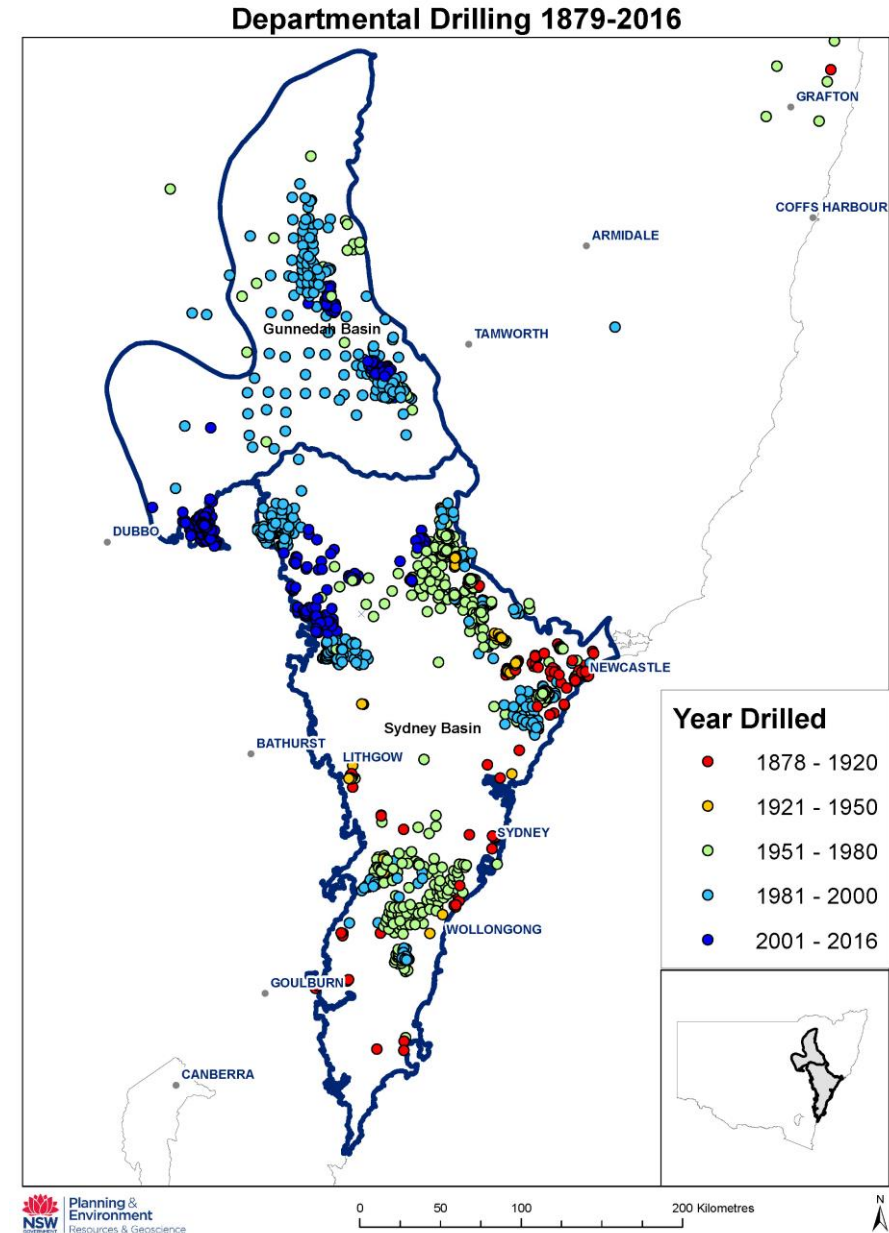


## Background

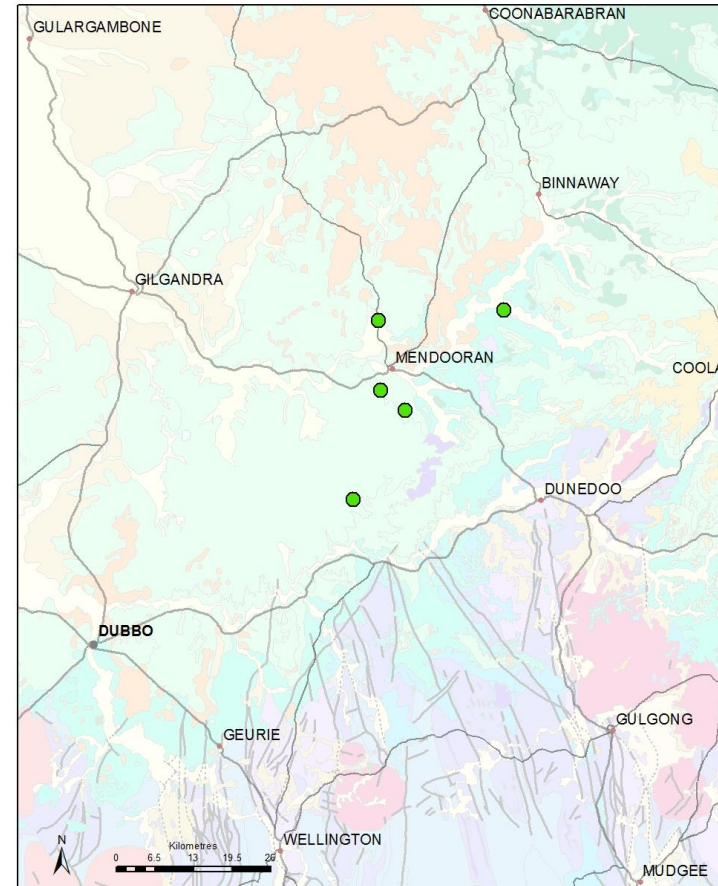
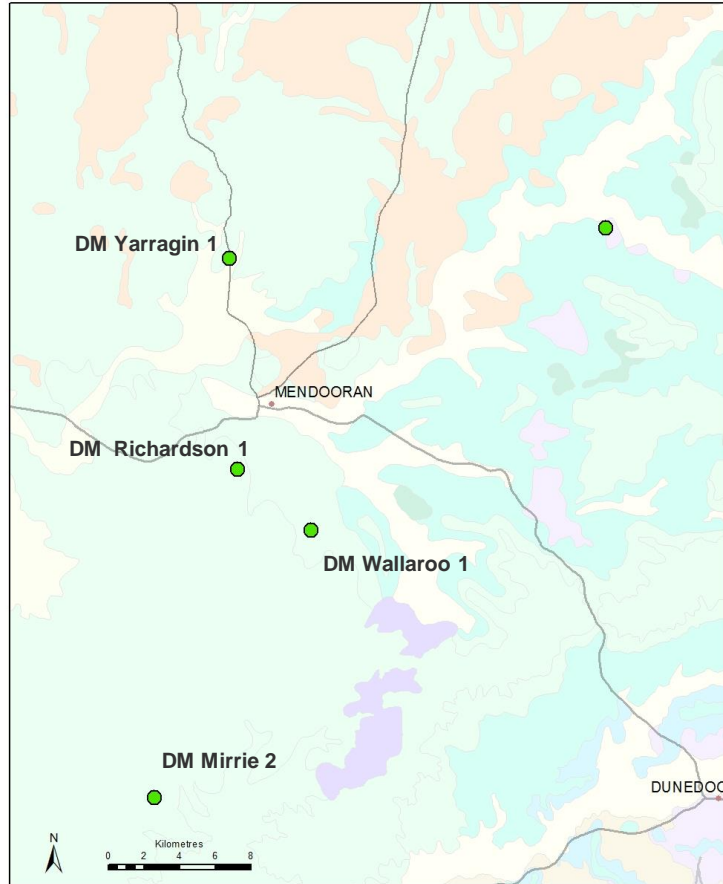
- Part of an ongoing program by the NSW Government to assess the state's coal resources
- The data is used to inform decisions regarding:
  - land use planning
  - Potential new coal exploration areas being considered by the Advisory Body for Strategic Release
    - strategic release framework

## Why Mendooran?

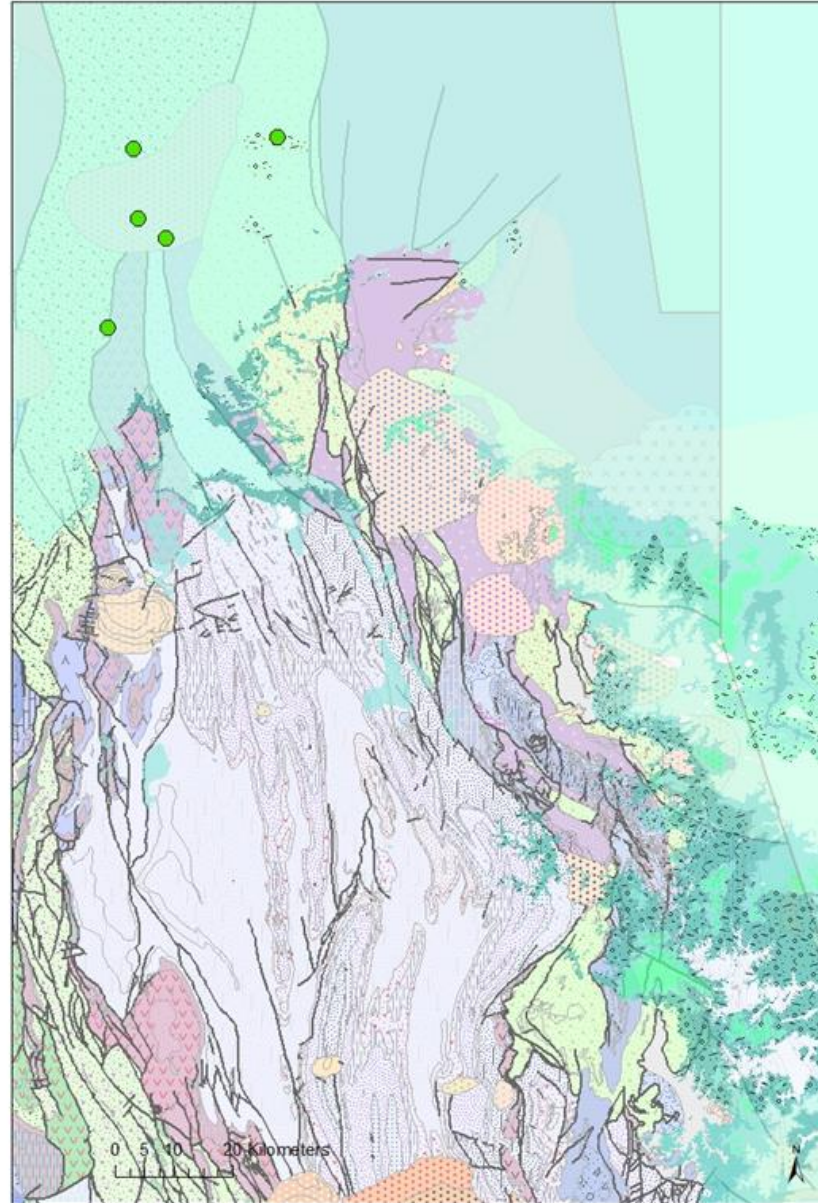
- Limited coal resource information available on the Mendooran area
- Relatively close to existing mining operations in the northern part of the Western Coalfield.



# Drillhole locations



# Geological context



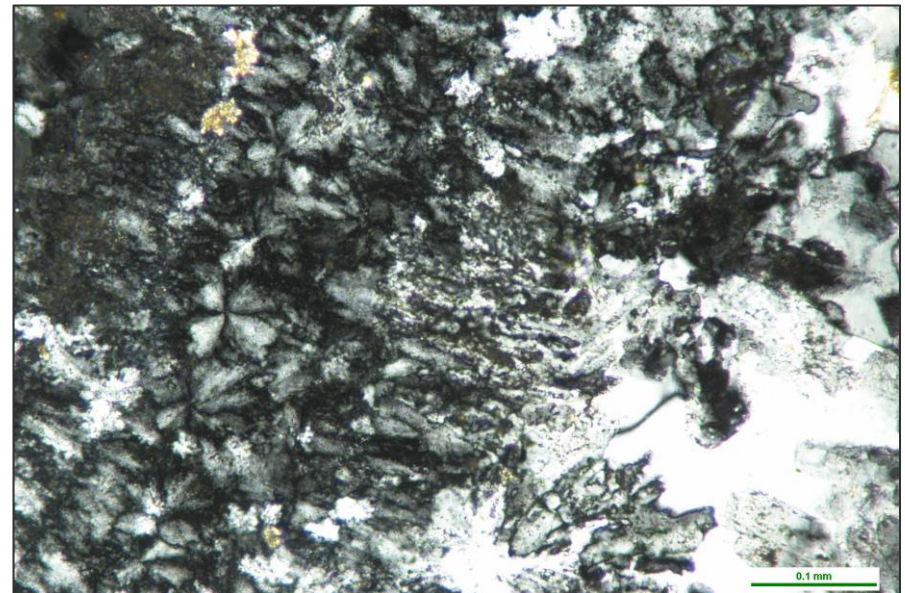
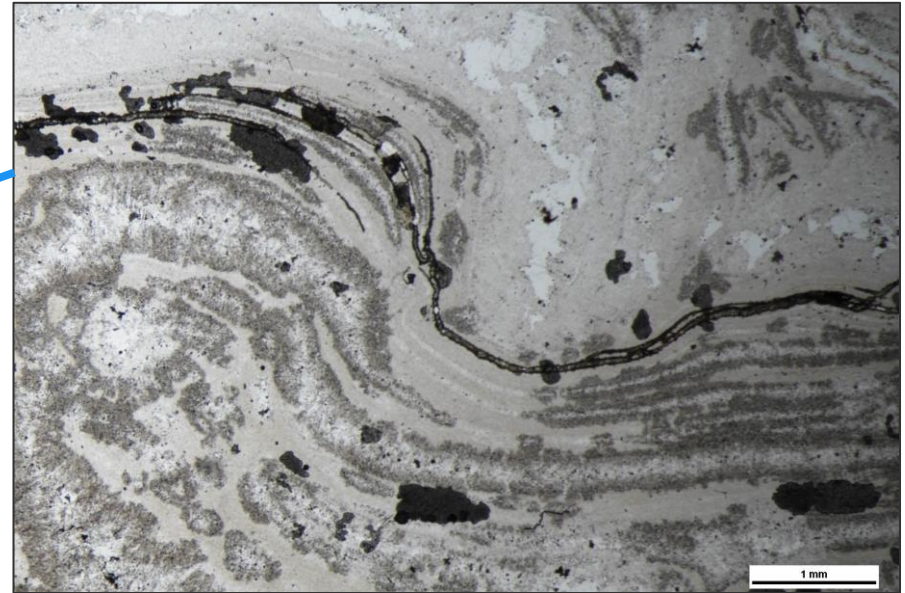


## Current drilling progress

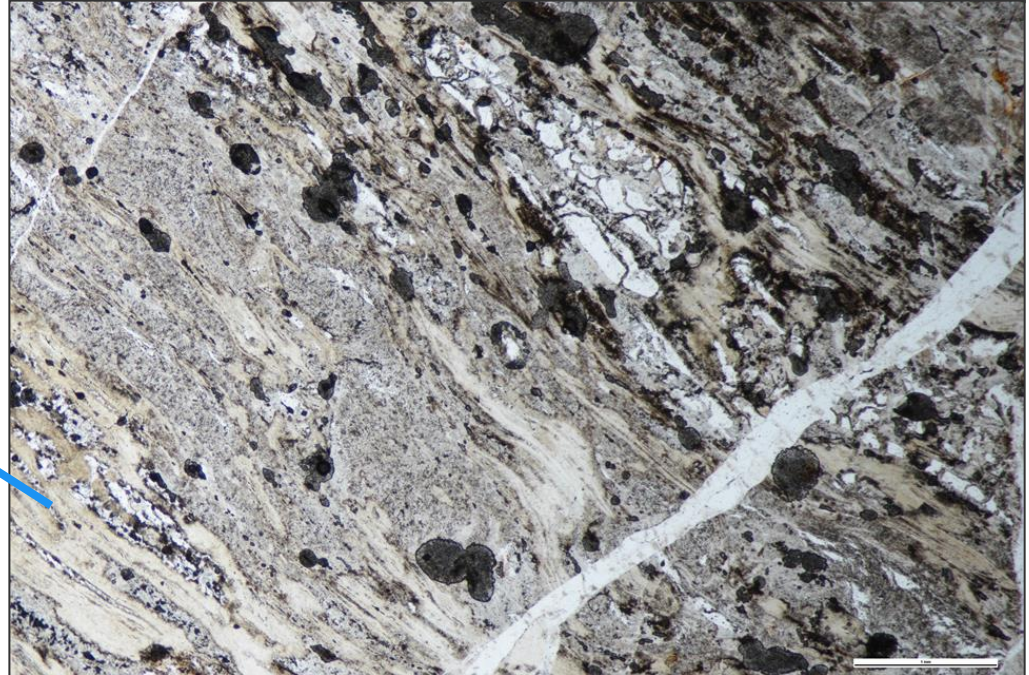
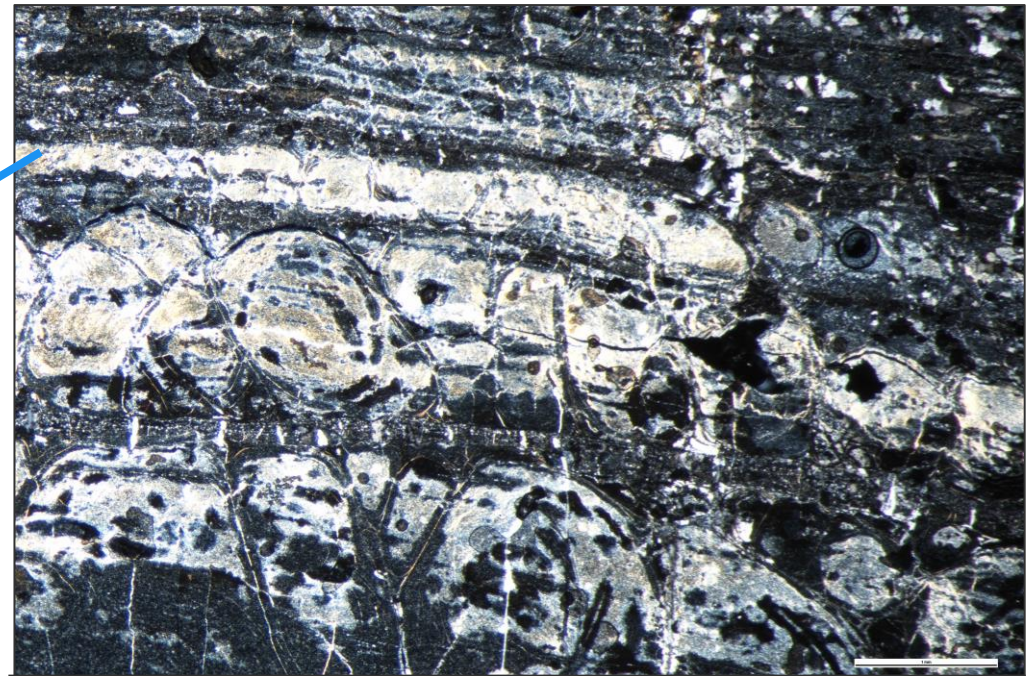
- Three holes completed with bottom of hole intercepting volcanic rocks
- One hole suspended in basin sediments due to adverse ground conditions
- DM-Wallaroo-1 and DM-Richardson-1 both appear to have intercepted a flow banded Rhyolite unit, likely to be Rylstone Volcanics
- DM-Mirrie-2 completed, appears to have intercepted silicified volcaniclastic rocks.



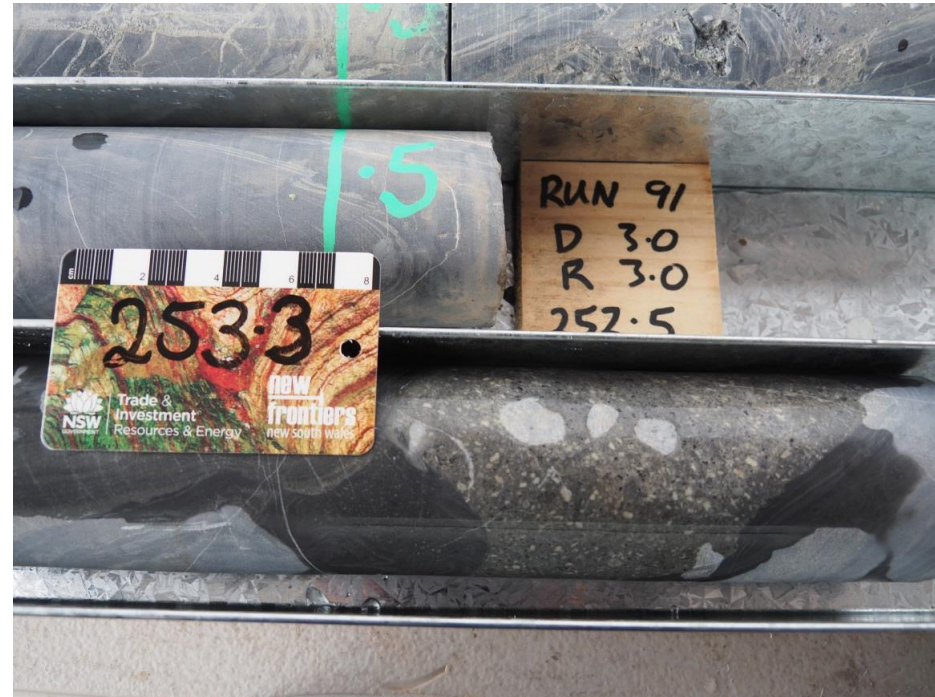
# Bottom of hole DM Richardson 1



# Bottom of hole DM Wallaroo 1

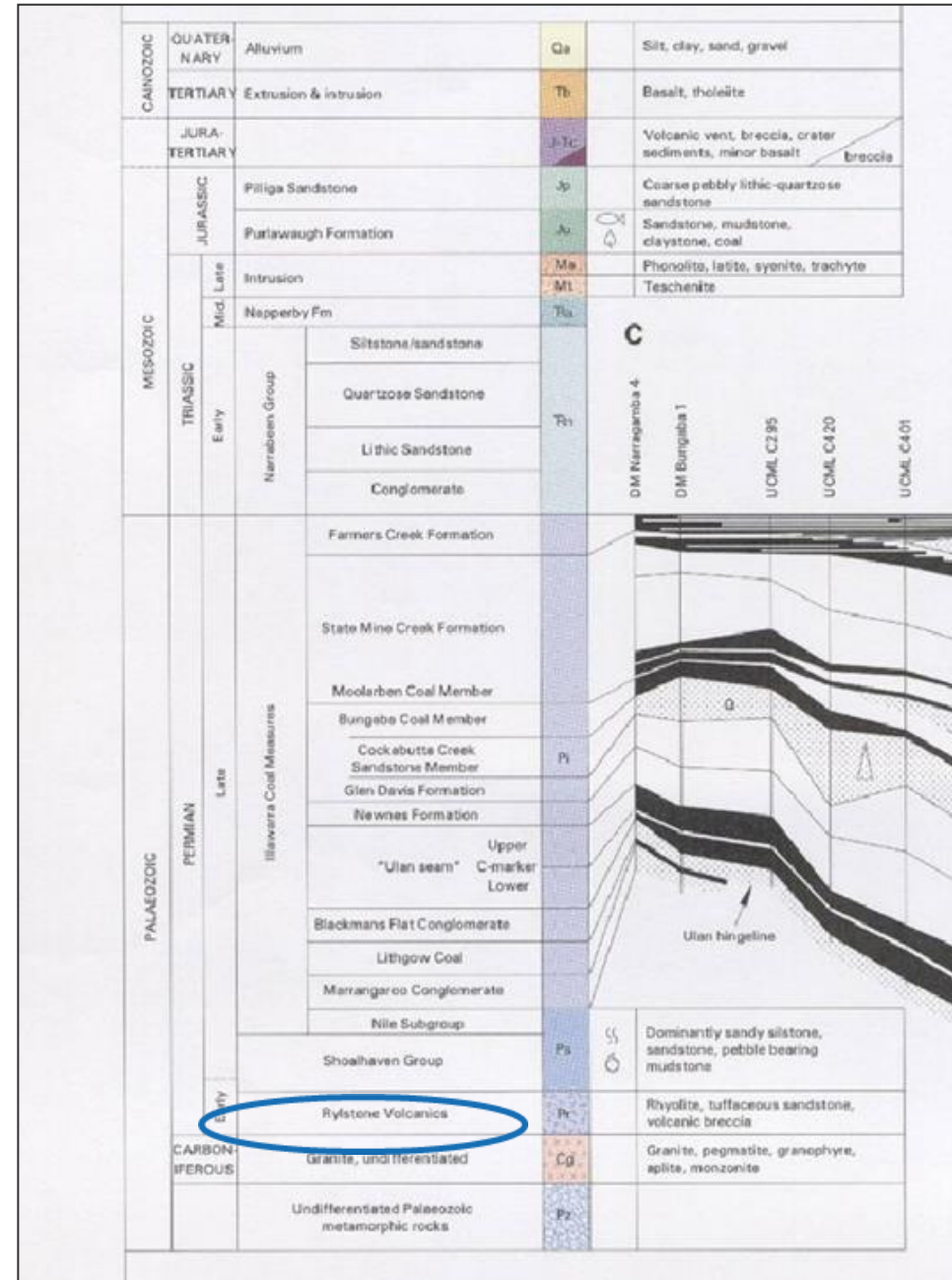


# Bottom of hole DM Mirrie 2



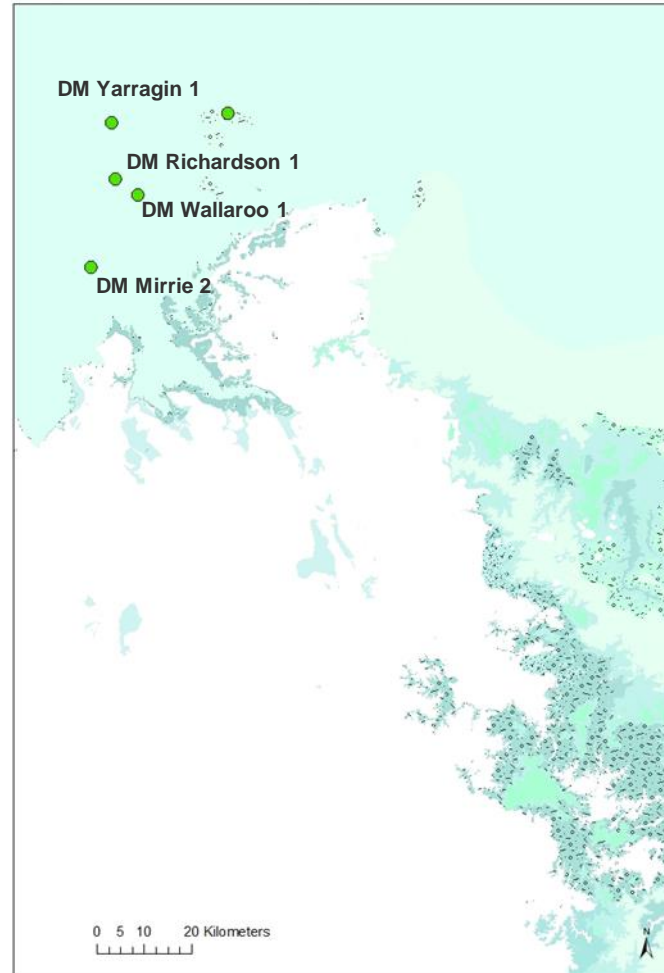
# Bottom of hole geology

- Intercepted Permian?? Volcanics
- Interpreted as Rylstone Volcanics.

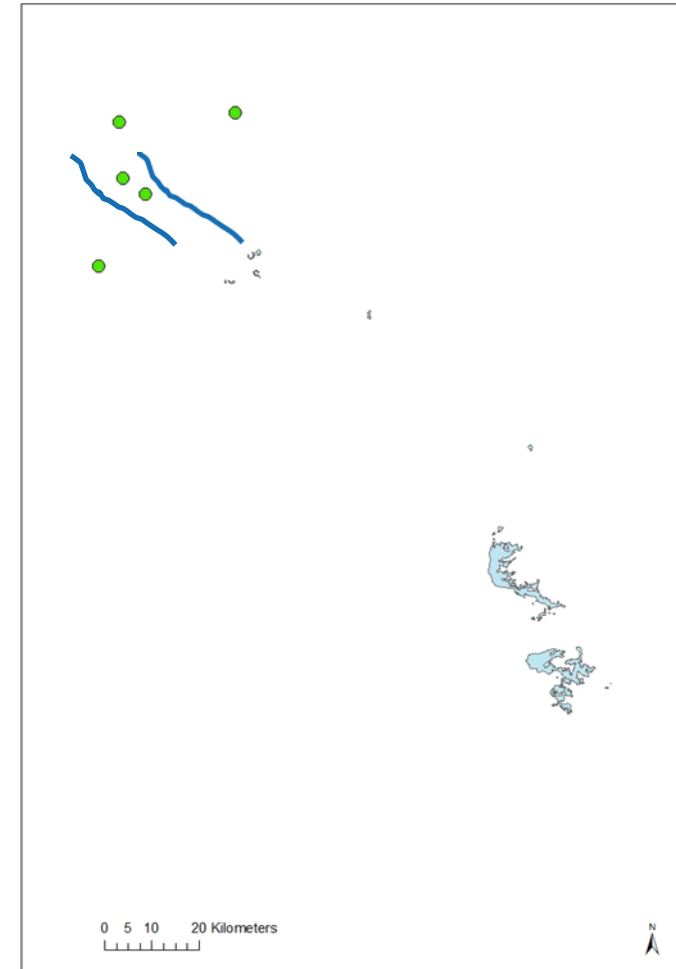


# Rylstone Volcanics

- Mapped distribution of Rylstone Volcanics
- Rylstone Volcanics host the Bowdens Silver Project.



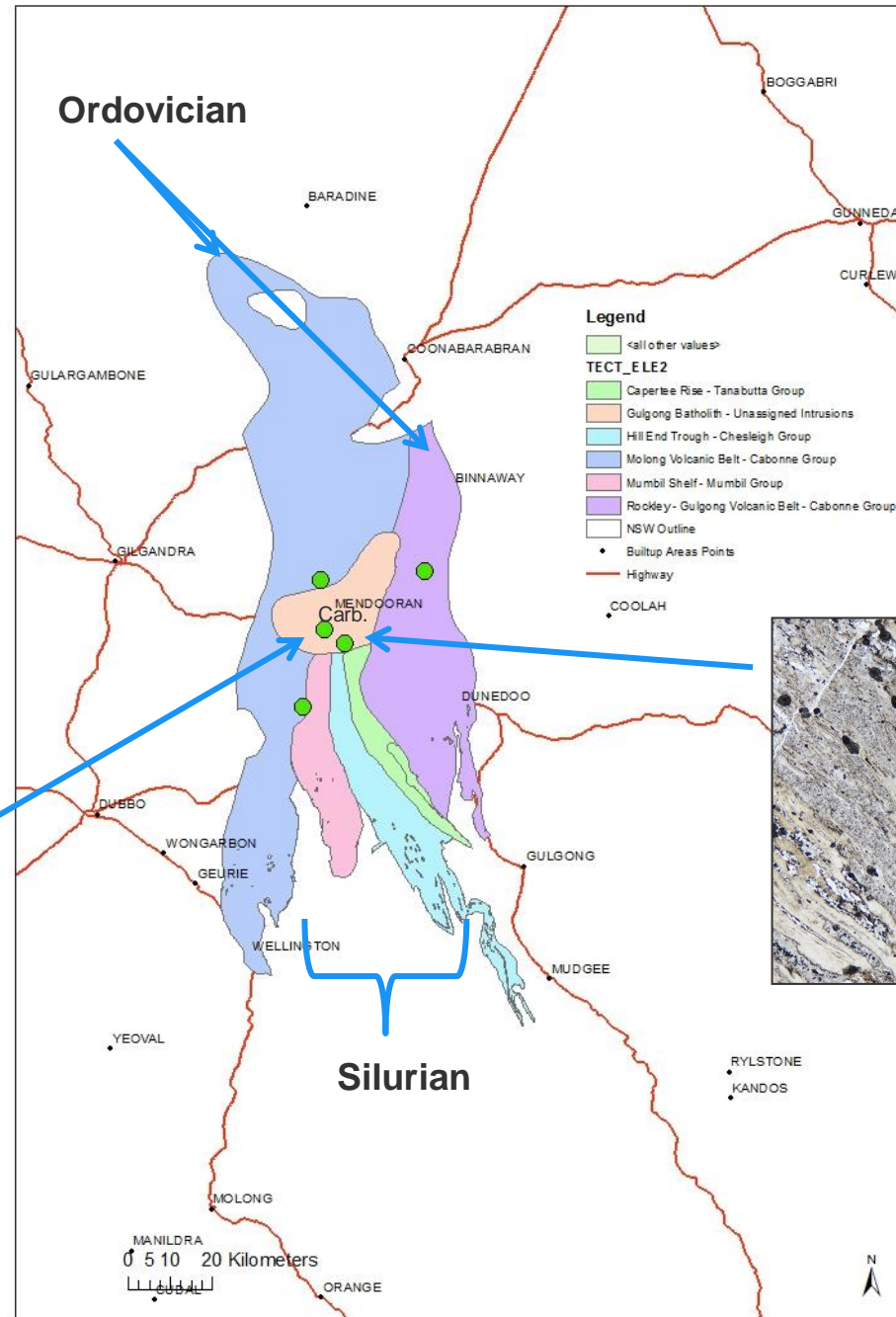
Permo-Triassic Basins



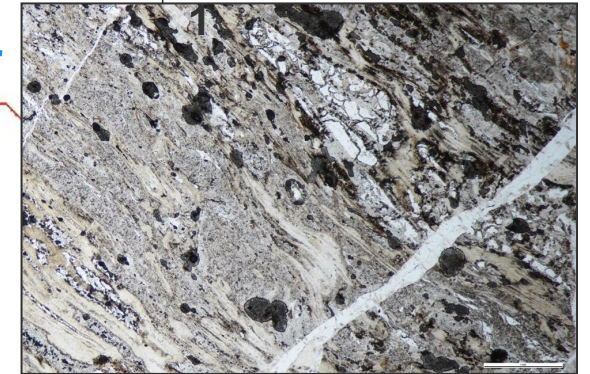
Rylstone Volcanics

# Potential under cover

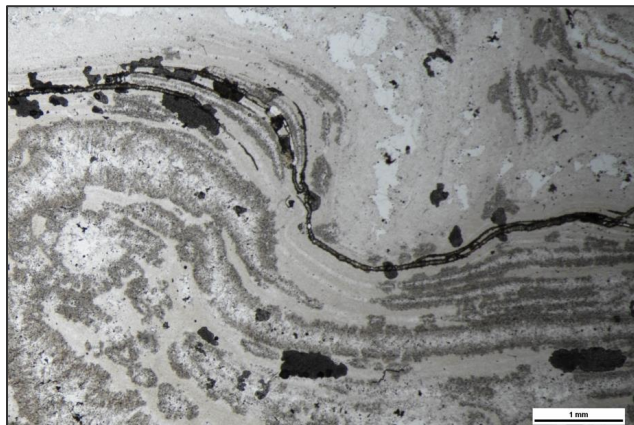
- Potential for these Carboniferous to Ordovician basement units beneath basin
- Mineralisation potential
- Looking Glass Project
- Bowdens Silver Deposit.



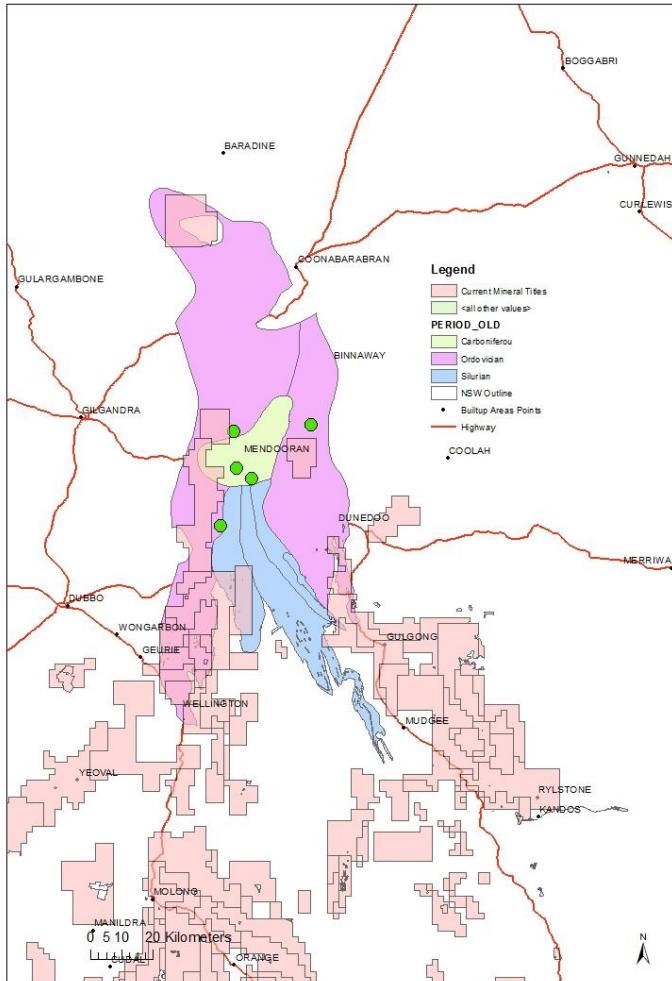
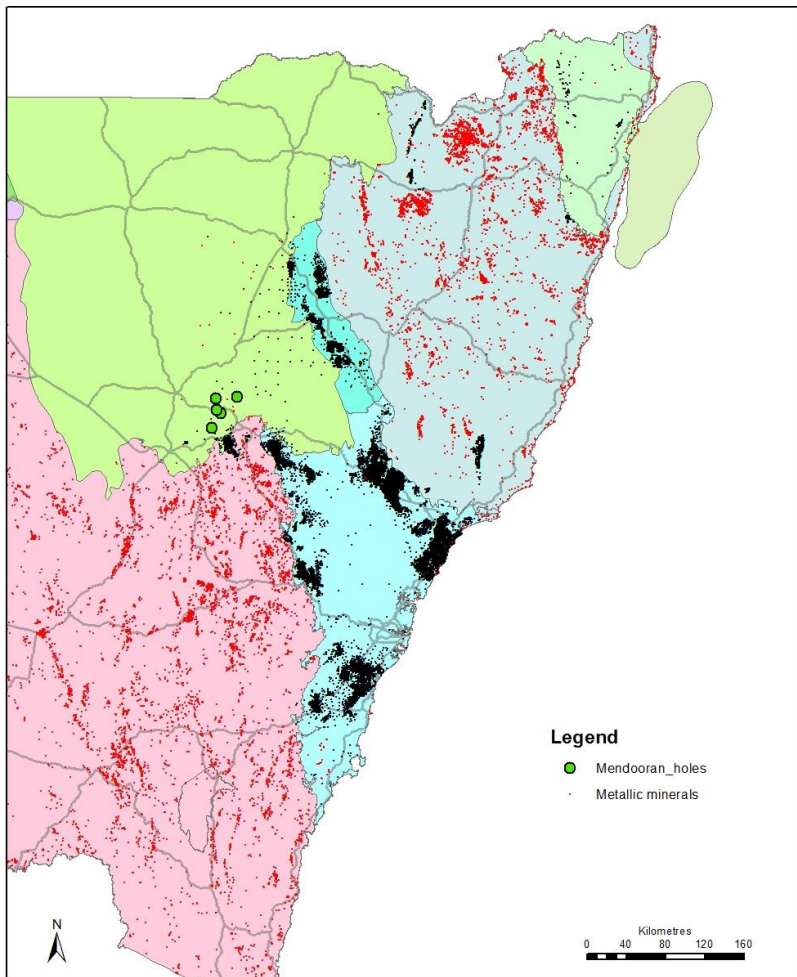
DM Wallaroo 1



DM Richardson 1



# Using coal drilling – basin margins







**Daniel Cronin**

daniel.cronin@industry.nsw.gov.au

