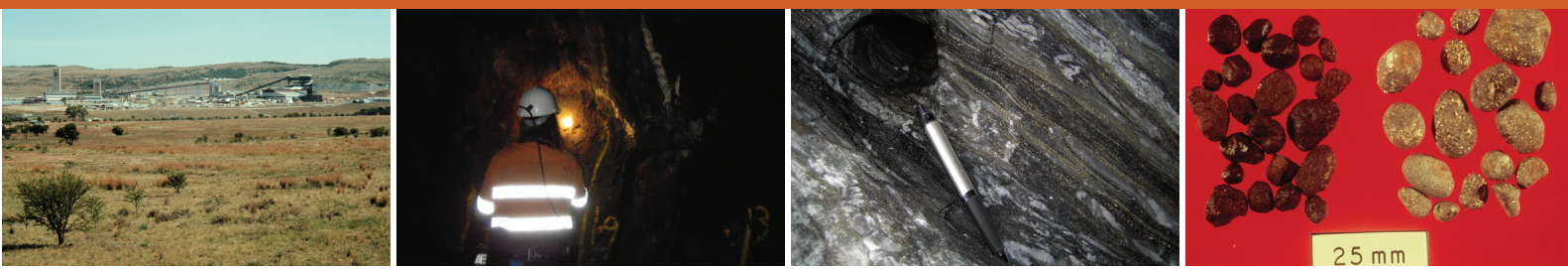


Geology of GOLD course

14 – 18 March 2011

School of Earth Sciences, University of Melbourne



This is a 5-day course of lectures, practical sessions and a field trip, devoted to the Geology of Gold.

It is suitable for geologists in the mineral industry or government with early exploration or mining experience who want a broad coverage of gold geology as well as some of the latest research ideas and how they apply to mineral exploration.

The course also serves as an Honours and Postgraduate course for students interested in entering the mineral industry. Interaction between the various groups of participants has become a much-valued feature of the week since this course was first run in 1995.

The course covers all major types of gold deposits with emphasis on Archaean deposits of Western Australia and slate-belt deposits of the Victorian gold province. Porphyry, epithermal, Carlin and Witwatersrand gold are all covered, with discussion of current ideas on each. An overnight field trip takes participants through the heart of the Victorian gold province visiting several past producers and some new operations.

Geochemistry, structural geology, metamorphic petrology, regolith and deposit geology are covered at a level to enable participants to take their place in industry and government teams and make a contribution in all of these areas. An emphasis of the course is on a holistic approach that uses all applicable fields of geology to address gold issues.

COURSE LEADER: Professor Neil Phillips

PRESENTERS INCLUDE: Dr Martin Hughes, Dr Andrew Tomkins, Assoc Prof Janet Hergt, Jonathan Law, Professor Roger Powell and Dr Iain Pitcairn.

COST FOR INDUSTRY PARTICIPANTS: AUD\$750 that includes overnight field trip. Numbers will be limited due to the field component, and registrations are likely to close early.

REGISTRATION: Kerry Grieser, School of Earth Sciences, University of Melbourne
+61 3 8344 9866, Fax: +61 3 8344 7761; kerryh@unimelb.edu.au