

ACTIVEX LIMITED

ASX: AIV

**GILBERTON GOLD PROJECT-
THE FORGOTTEN GOLDFIELD**



Gilberton Gold Project – We thought it was the dry season??



Gilberton Gold Project - Disclaimer

Certain statements contained in this presentation, including information as to the future financial or operating performance of ActivEX Limited and its projects, are forward-looking statements. Such forward looking statements:

- Are necessarily based upon a number of assumptions and estimates that, while considered reasonable by ActivEX Limited, are inherently subject to significant technical, business, economic, competitive, political and social uncertainties and contingencies;
- Involve known and unknown risks and uncertainties that could cause actual events or results to differ materially from estimated or anticipated events or results reflected in such forward-looking statements; and
- May include, among other things, statements regarding targets, estimates and assumptions in respect of production, prices, operating costs, results, capital expenditures, reserves and resources, and are or may be based on assumptions and estimates related to future technical, economic, market, political, social and other conditions.

ActivEX Limited disclaims any intent or obligation to update publicly any forward-looking statements, whether as a result of new information, future events or otherwise.

All forward-looking statements made in this presentation are qualified by the foregoing cautionary statements. Investors are cautioned that forward-looking statements are not guarantees of future performance and accordingly investors are cautioned not to rely on forward-looking statements due to the inherent uncertainty therein.

The information in this presentation relates to exploration results and is based on information compiled by Mr Mark Derriman, Member of the Australasian Institute of Geoscientists (MAIG 1566). Mr Derriman has sufficient experience that is relevant to the style of mineralisation and type of deposits under consideration and to the activities which he is undertaking to qualify as a Competent Person as defined in the 2012 Edition of the JORC Australasian Code for Reporting of Exploration Results, Mineral Resources and Ore Reserves.

Gilberton Gold Project – Team Members Past and Present

The following geologists have played considerable roles in the understanding and advancement of the Gilberton Gold Project over many years

ActivEX Geologists Past and Present

Doug Young

Juli Hugenholtz

Jose Veracruz

Josh Leigh

Shaun Anderson

Jane Harvey

Sean Ke – Current Exploration Manager

Klondike and TerraSearch Geologists

Gregg Morrison

Harry Masterson

Simon Beams

If I have left anyone out my sincere apologies

Gilberton Gold Project – Long History European Settlement

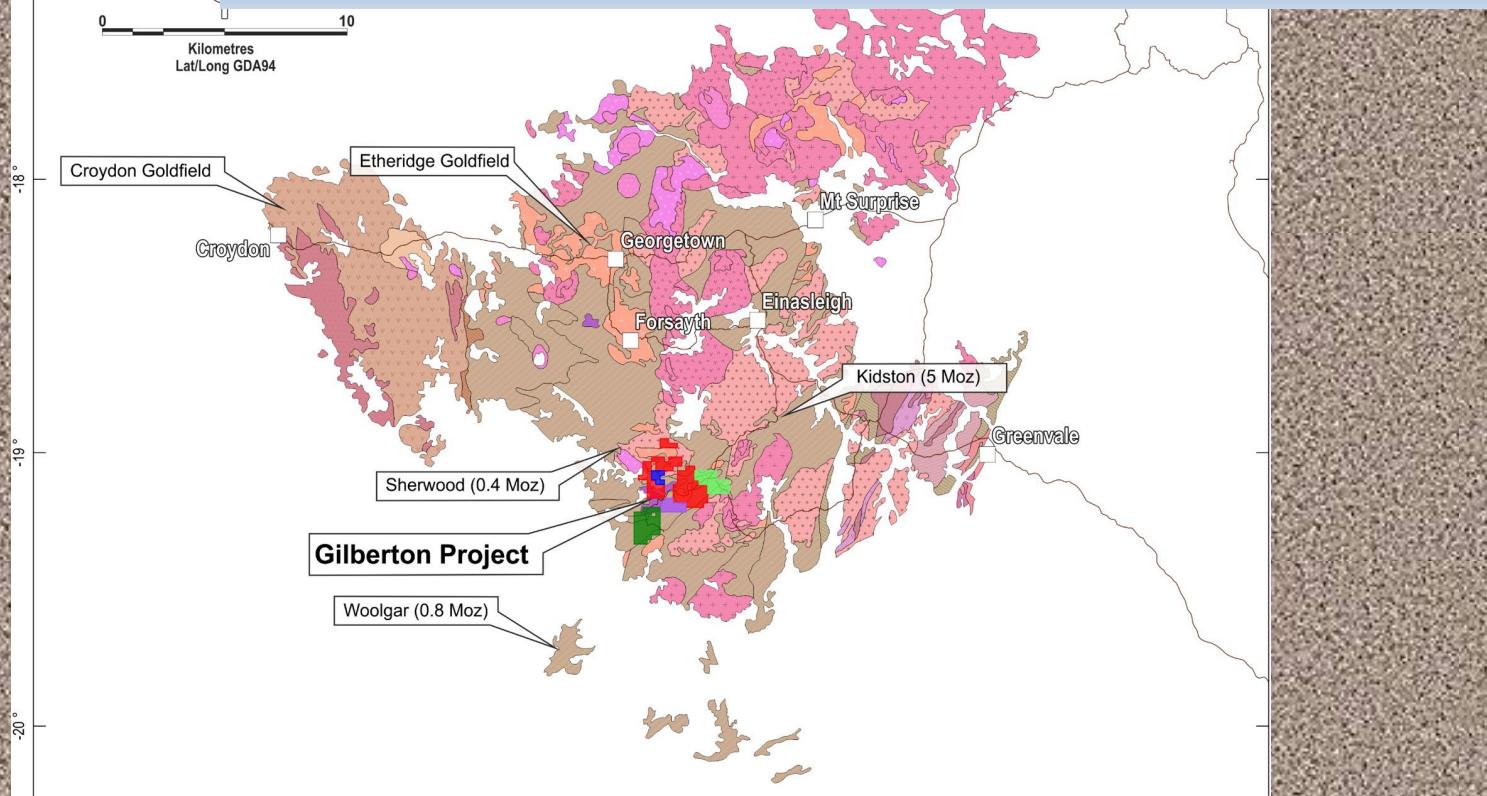


Gilberton Gold Project-"The Prize"



Gold nuggets found by local prospectors within the Gilberton Project

Gilberton Gold Project – Regional Geology



Legend

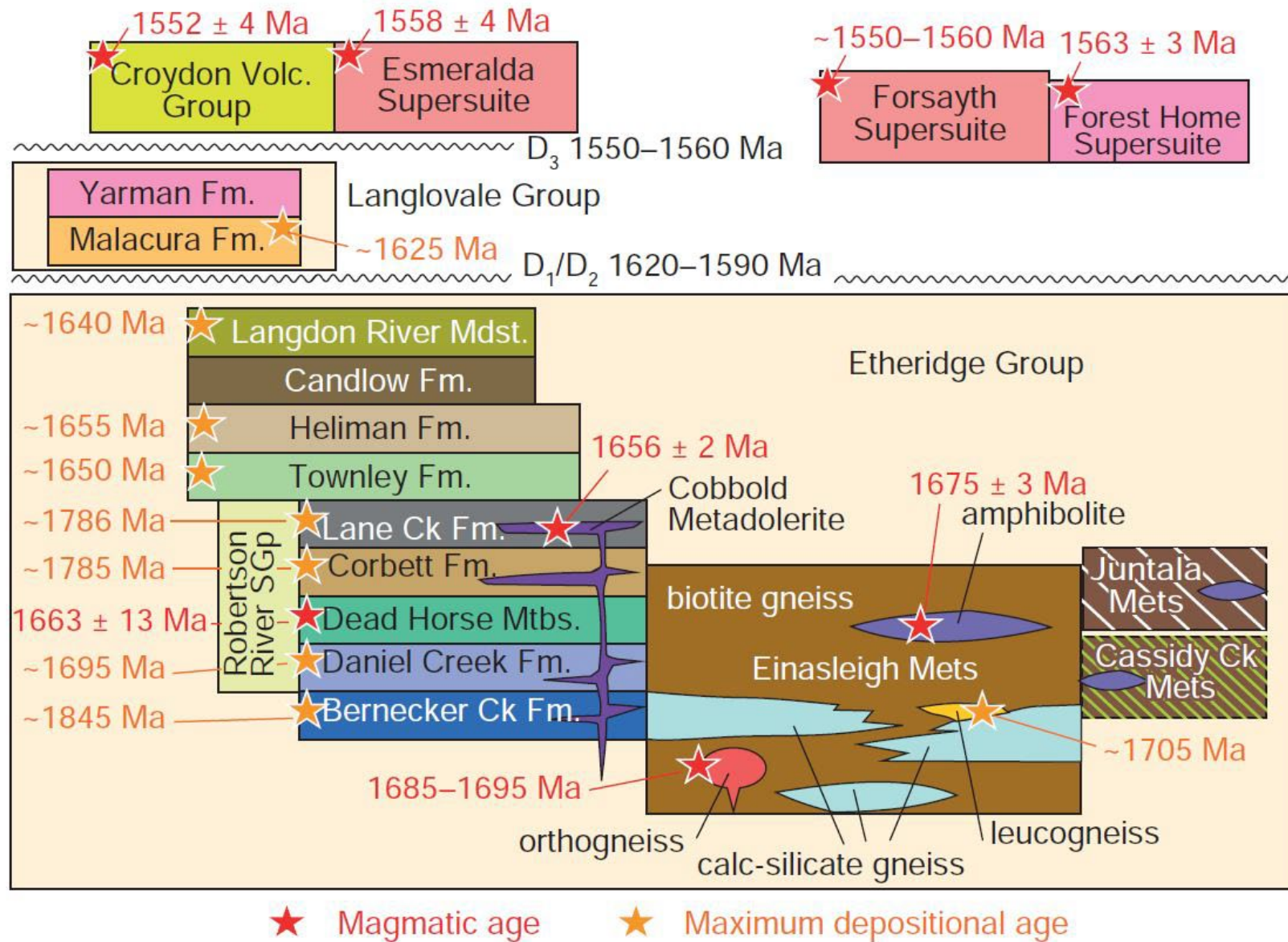
- Road
- Locality
- EPM 18615 (Mt Hogan)
- EPM 18623 (Gilberton)
- EPM 19207 (Percy River)
- EPM 26232 (Gum Flat)
- EPM 26307 (Split Rock)

Geology

- Paleozoic**
 - Permian - Kennedy Province Intrusive
 - Late Carboniferous / Early Permian - Kennedy Province Extrusive
 - Carboniferous - Kennedy Province Extrusive
 - Carboniferous - Kennedy Province Intrusive
 - Late Devonian / Early Carboniferous - Gilberton Formation
 - Silurian - Pama Province Intrusive
 - Ordovician - Netherwood and Saddington Tonalite
- Precambrian**
 - Neoproterozoic / Cambrian Mafics and Ultramafics
 - Neoproterozoic / Cambrian Halls Reward Metamorphics
 - Mesoproterozoic - Langlovale Group
 - Mesoproterozoic / Neoproterozoic Inorunie Group
 - Mesoproterozoic - Esmeralda Supersuite
 - Mesoproterozoic - Croydon Volcanic Group
 - Mesoproterozoic - Etheridge Province Intrusive
 - Palaeoproterozoic - Metamorphic Basement



Gilberton Gold Project – Regional Geology



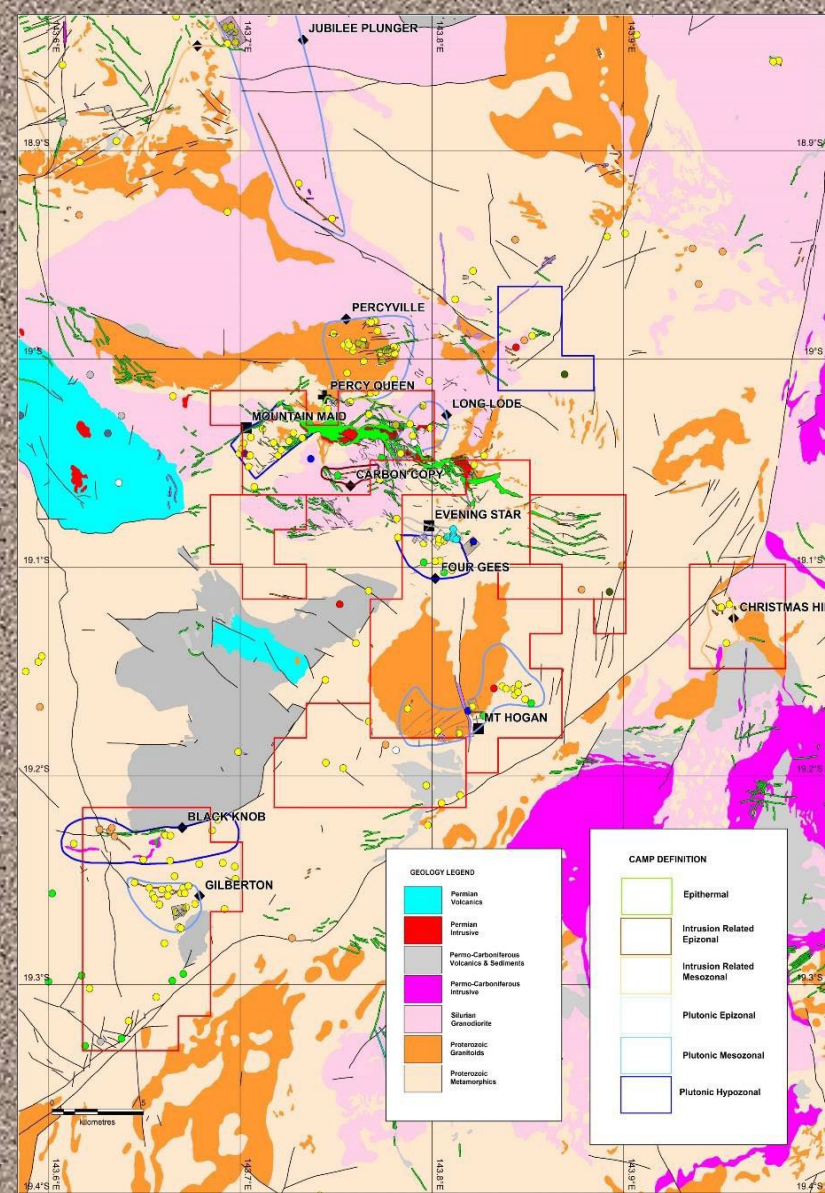
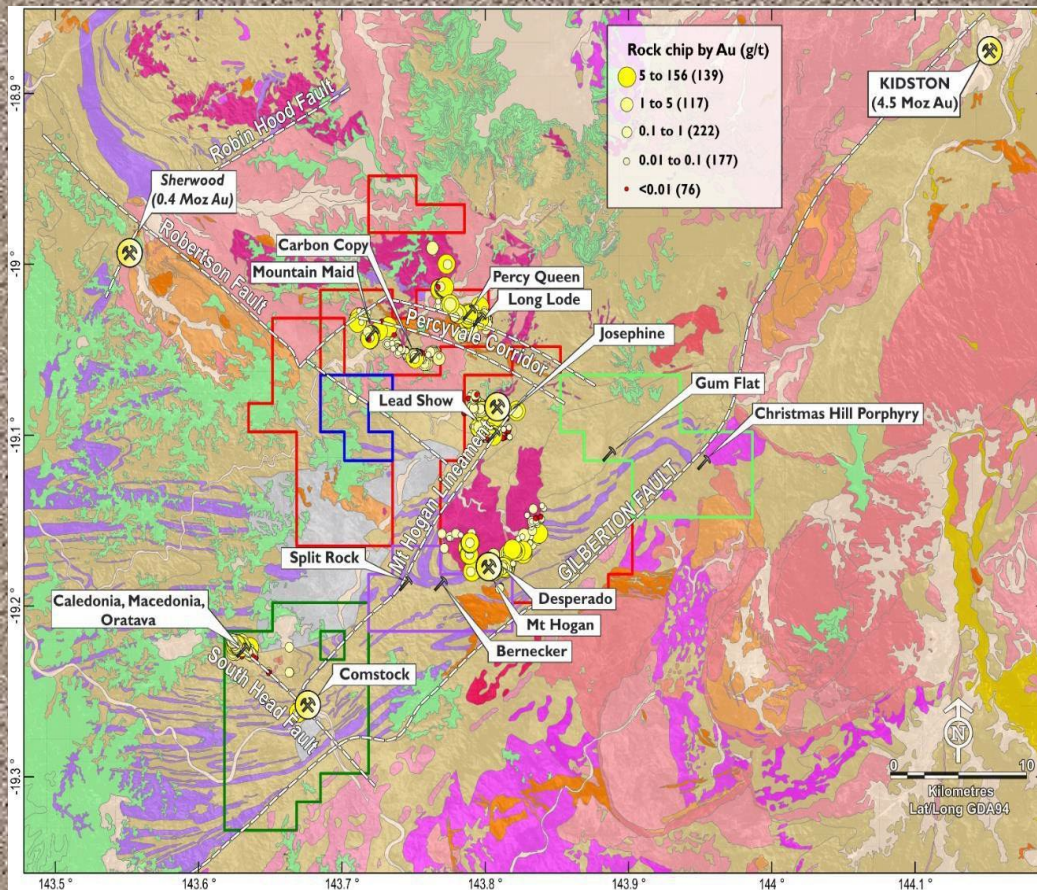
Gilberton Gold Project -Overview

- Highly gold endowed gold province
- Recent gold production in the 90's by Eltin Minerals included:
- Josephine Mine(open cut) 65Kt @ 4.1g/t (8K oz) and Mt Hogan Mine (opencut and underground) 405Kt @ 5.5g/t (70K oz). Both are assets of AIV and are key targets in the ongoing exploration especially given the high grade nature of the gold ore.
- Recently completed project wide lithostructural interpretation based on 50m line spaced airborne magnetic/radiometric geophysical survey with several high priority targets identified.
- Regional metallogenic study completed with several styles of mineralisation identified and their associated geological/geochemical signatures
- Unmined Non JORC resources in the vicinity of the Mt Hogan open pit between 10K and 20K oz Au
- Significant down dip and along strike in addition to deeper untested mineralised lodes potential beneath the Mt Hogan and Josephine Open Pits (assets of company) to be evaluated by ground geophysical surveys
- 4,000m RC/Core Drill currently in progress and more planned for 2022

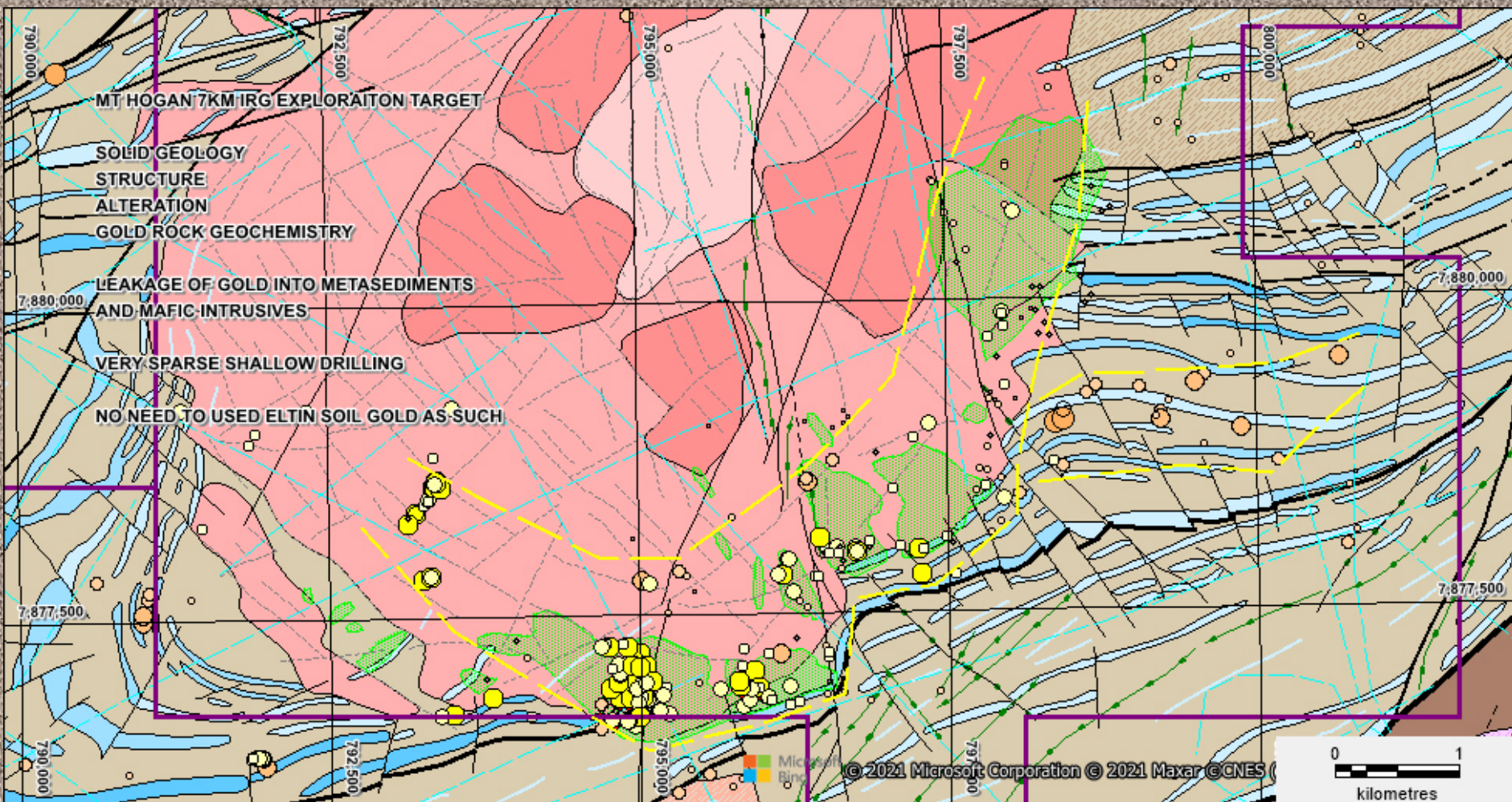
Gilberton Gold Project – Eltin Minerals Era mid 1990's - 2 year operation



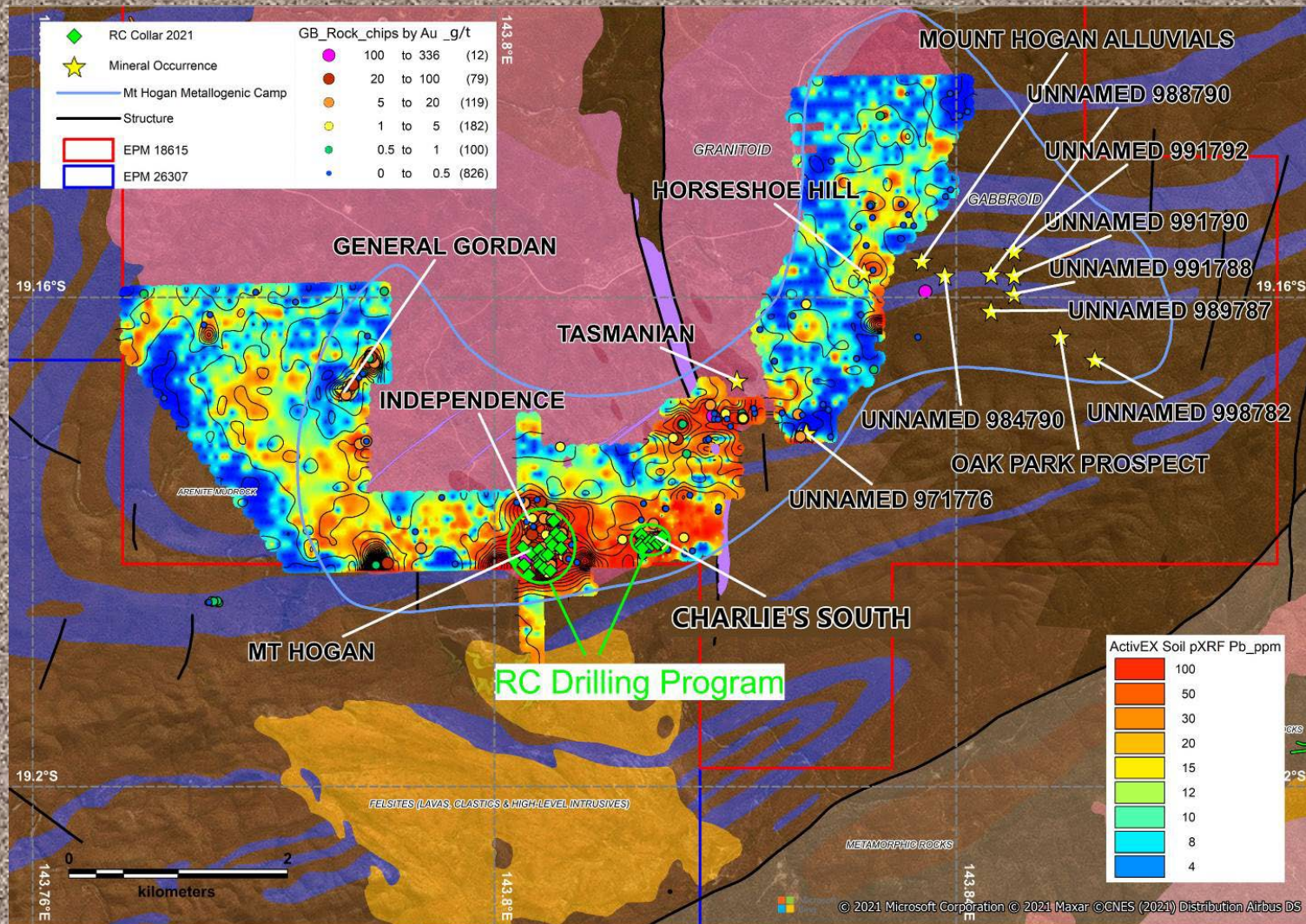
Gilberton Gold Project – Metallogenic Targets



Gilberton Gold Project – Lithostructural Targeting



Gilberton Gold Project- Using other elements to assist



Ag-As-Au-Bi-Cu-Hg-Mn-Mo-Pb-Sb-Se-Te-W-Zn-Suggested Multielement Suite
G Morrison

Gilberton Gold Project – Granite Altered and Unaltered



Gilberton Gold Project – Not just flat lying lodes

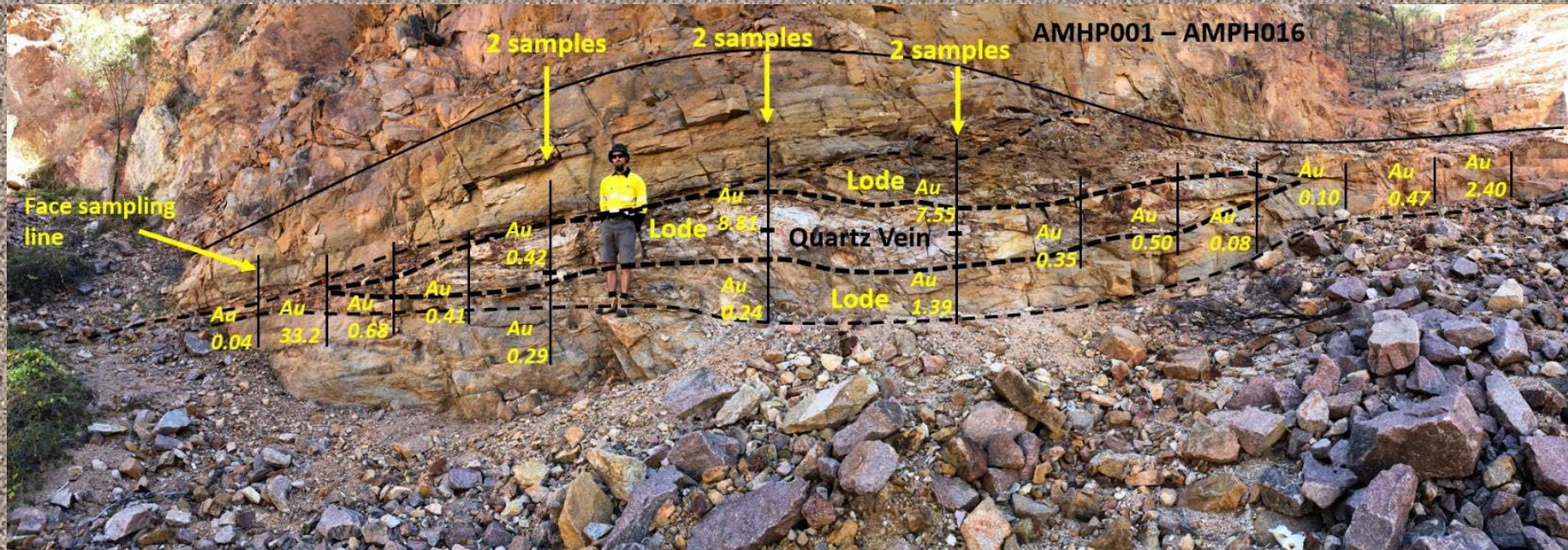


Gilberton Gold Project – Mt Hogan Ore



Early medium
grained buck
quartz fractured
brecciated and
recrystallised.
open space filled
by pyrite galena
and chalcopryite
336g/t Au
4989/t Ag

Gilberton Gold Project-Mineralised Lode left behind Exploration in the Shadow of the Headframe

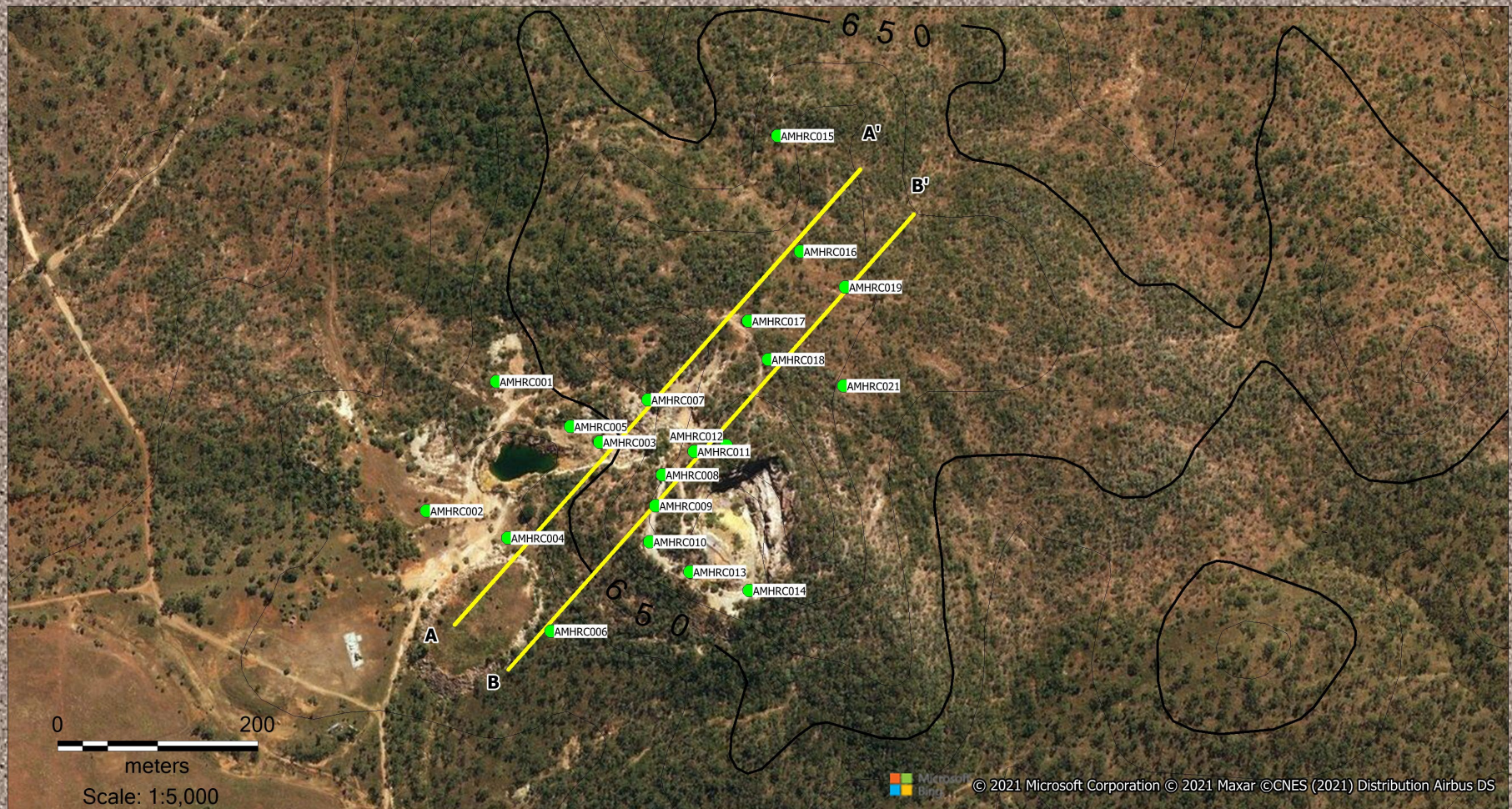


Face sampling in the Mt Hogan Open Pit returned assays to 33.2g/Au within SW shallow dipping auriferous quartz lodes

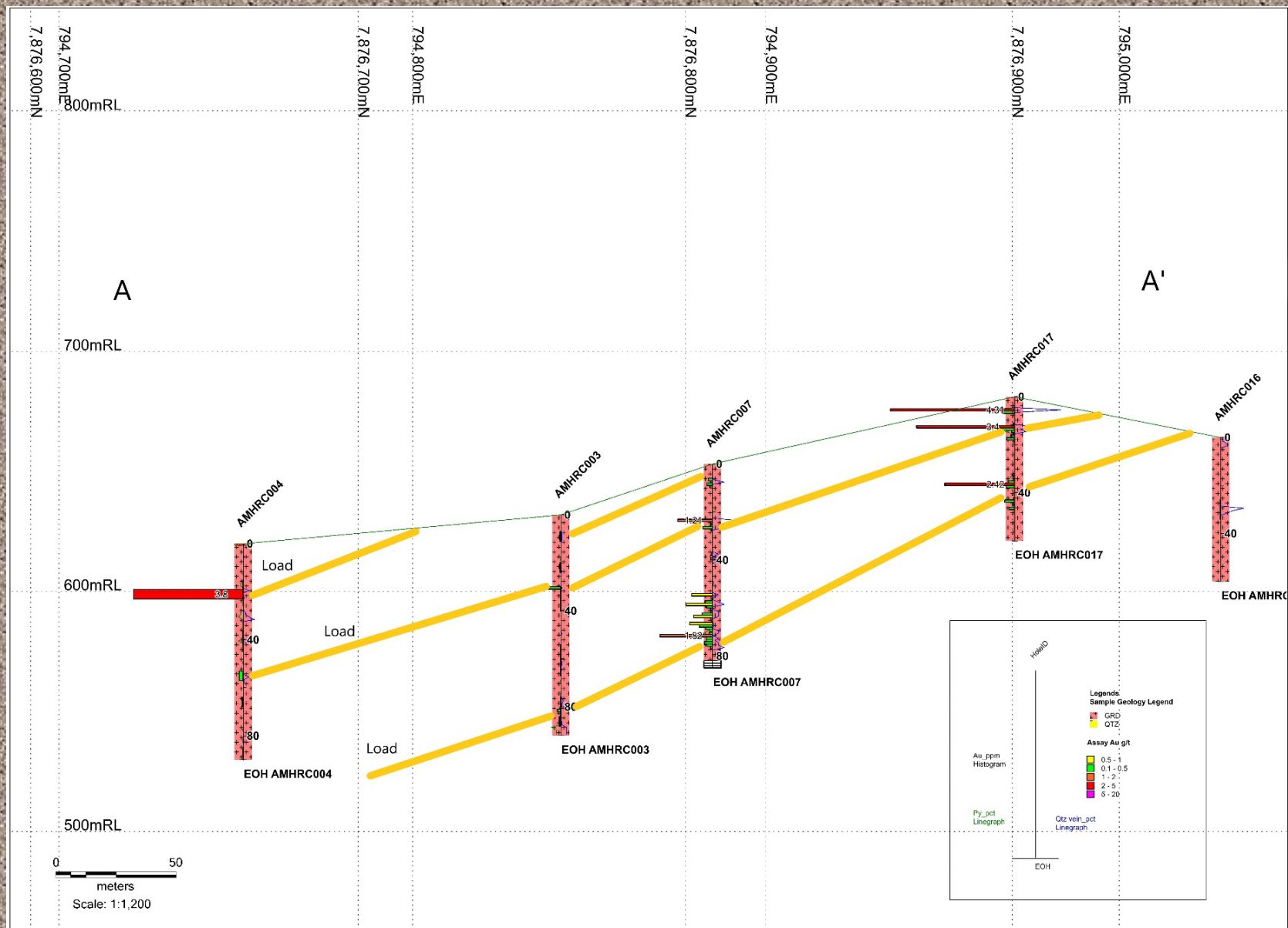
Gilberton Gold Project- All Successes need a Team



Gilberton Gold Project –Mt Hogan Phase Drilling



Gilberton Gold Project – Mt Hogan Cross Section



Gilberton Gold Project – Significant Au Intersections – 2021 RC Drilling Program

- AMHRC004** 4m @3.8g/t Au (from 19m, 4 metre composite)
- AMHRC005** 3m @3.86g/t Au (from 101m), including 1m @9.78g/t Au (from 101m)
1m @4.23g/t Au (from 109m)
- AMHRC009** 2m @4.27g/t Au (from 80m), including 1m @6.96g/t Au (from 80m)
- AMHRC010** 2m @4.97g/t Au (from 57m)
- AMHRC011** 9m @0.66g/t Au (from 32m)
- AMHRC013** 4m @2.13g/t Au (from 72m), including 1m @6.27g/t Au (from 72m)
- AMHRC014** 1m @9.44g/t Au (from 11m)
2m @1.51g/t Au (from 25m)
4m @4.51g/t Au (from 52m), including 1m @13.75g/t Au (from 53m)
4m @1.25g/t Au (from 76m)
- AMHRC017** 1m @4.31g/t Au (from 5m)
1m @3.4g/t Au (from 12m)
1m @2.42g/t Au (from 36m)
4m @1.25g/t Au (from 76m)
- AMHRC018** 1m @6.7g/t Au (from 2m)

Gilberton Gold Project – Where to Next??

1. 4,000m RC/Core Drilling currently in progress along southern margin of Mt Hogan Granite targeting areas of veining and alteration using 1:1000 scale geological mapping
2. Further 8,000m of RC drilling in 2022 continuing to explore the southern margin of the Mt Hogan Granite in addition to drilling in the vicinity of the Josephine historical open cut to the north of Mt Hogan.
3. Ongoing surficial geochemical and geological exploration of other metallogenic targets within the Gilberton Gold Project.
4. Initial surficial geological and geochemical exploration of tantalum occurrences within the project for LCT enriched pegmatites.
5. Ongoing engagement with all stakeholders



PH (02) 9251 9088

2/3B Macquarie Street,
Sydney NSW 2000

admin@activex.com.au
www.activex.com.au

