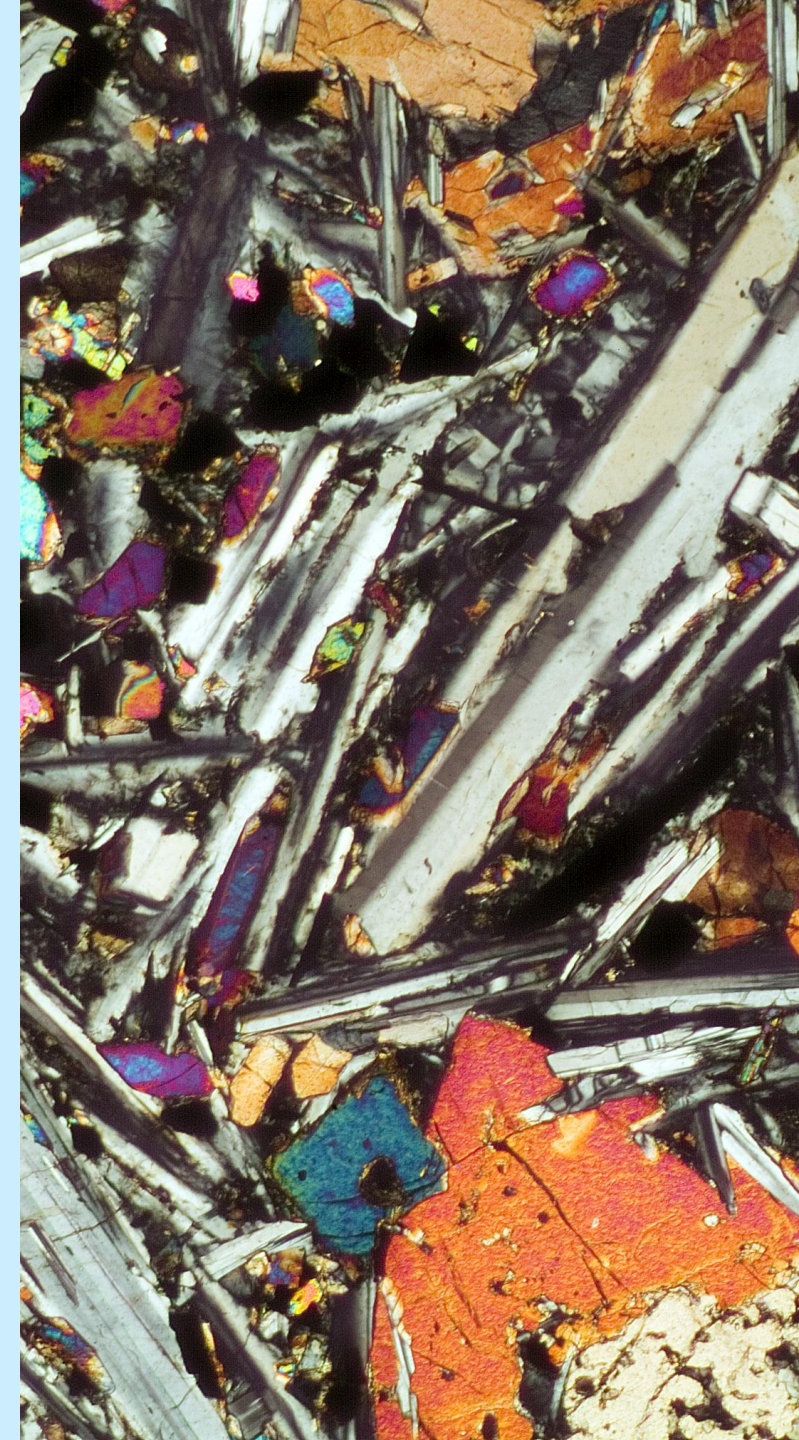


New functionality and datasets available in MinView and phone apps

James Ballard
Geoscientist GIS

24 November 2022



Contents

MinView updates

- NSW Seamless Geology v2.2
- Stratigraphic legend tool
- New datasets and functionality

NSW geology phone map updates

MinView demo

MinView updates

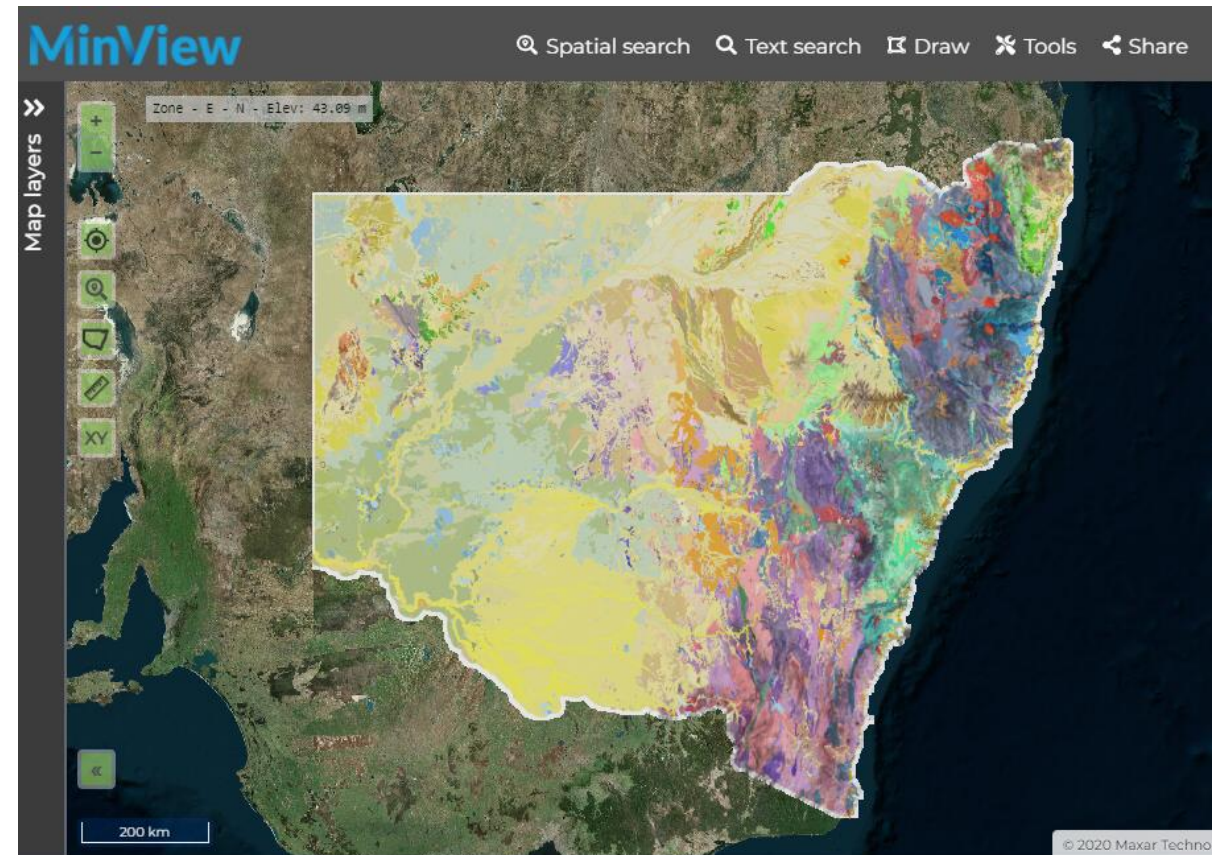
- NSW Seamless Geology

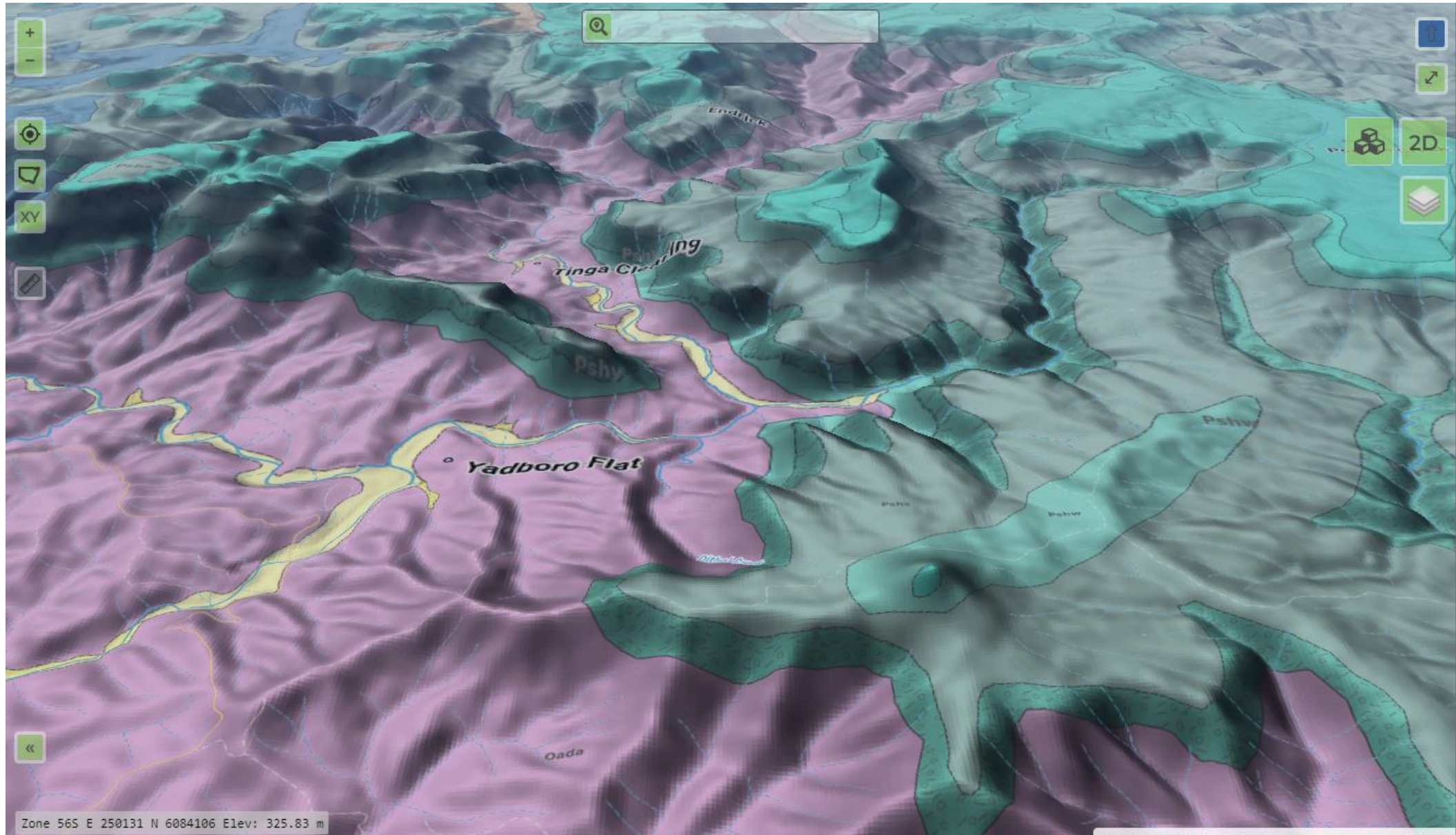
NSW Seamless Geology v2.2

New data

- Parts of the South Cobar MinEx CRC area
- Ulladulla 1:100,000 map sheet area
- Unpublished/published mapping data
 - Camberwell, Hunter Coalfield, Rouchel & Dubbo
 - New data for the Lachlan Orogen
- Cupala Creek Syncline area
- Jervis Bay 1:25,000 mapping
- New DEM backdrop for MinView

Data mining and error corrections





MinView updates

- Stratigraphic legend tool

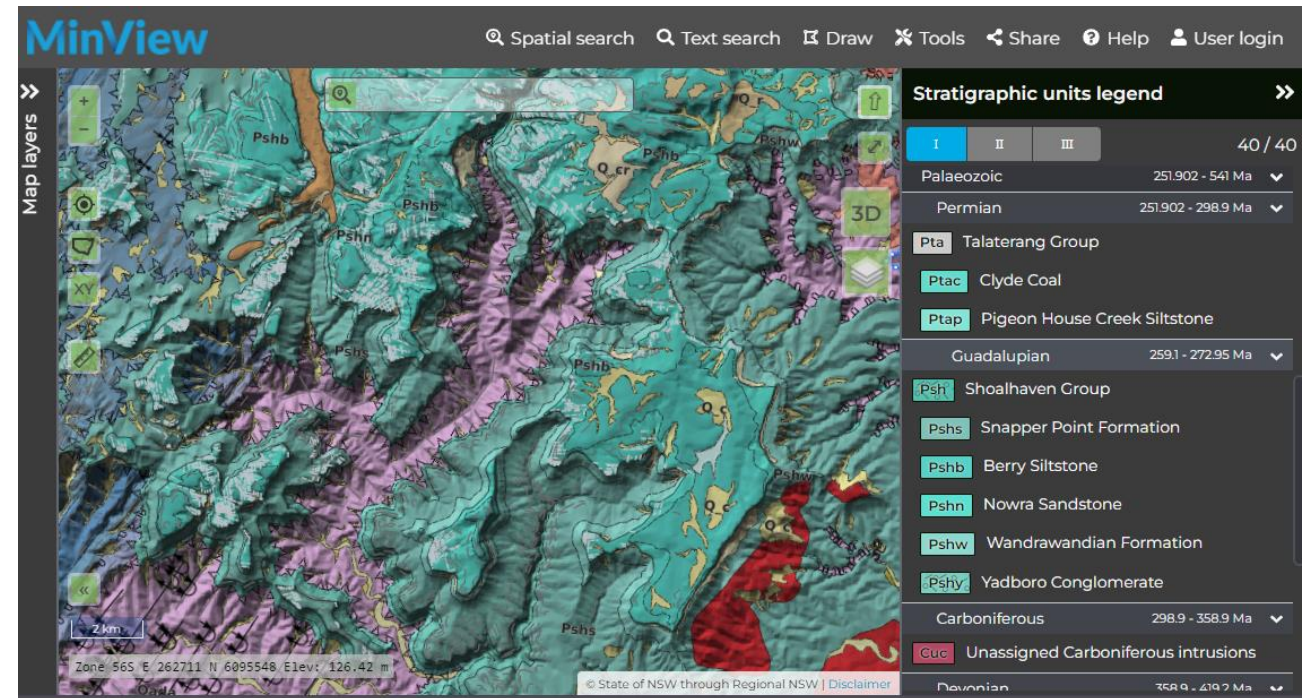
Stratigraphic legend tool

New legend for Seamless in MinView

- Presents rock units displayed in the map view
- Legend sorted by age
- Level of detail shown can be adjusted

Connects to detailed stratigraphic unit info

- Dynamic view
- Print report
- Data available for Permian–Triassic Basins/Delamerian Orogen



Stratigraphic unit information – future plans

References added to MinView

Permian–Triassic Basins/Delamerian Orogen

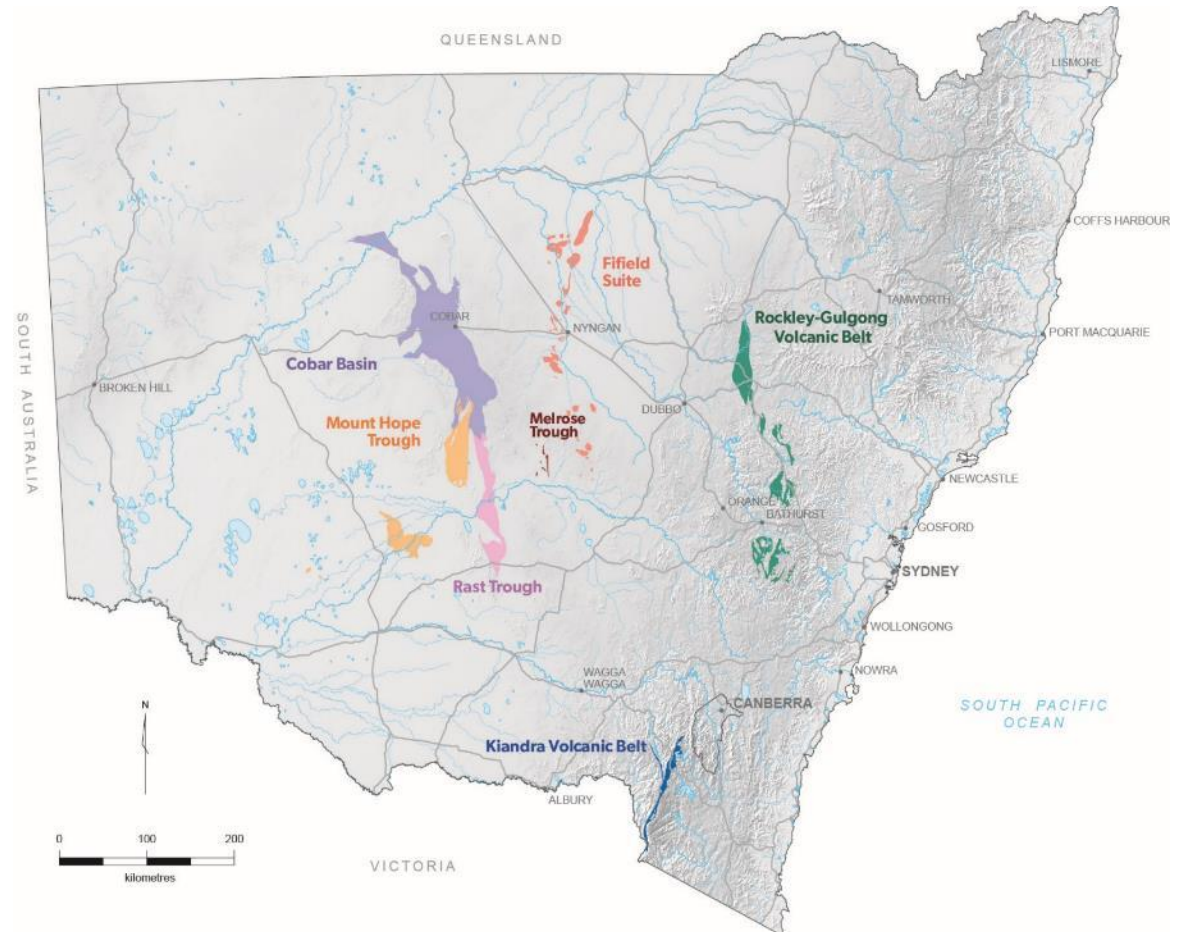
Cobar Supergroup (deepwater sequences)

- Cobar Basin
- Mount Hope Trough
- Rast Trough
- Melrose Trough

Macquarie Arc

- Rockley–Gulgong Volcanic Belt
- Kiandra Volcanic Belt

Fifield Suite



MinView updates

- New datasets and functionality

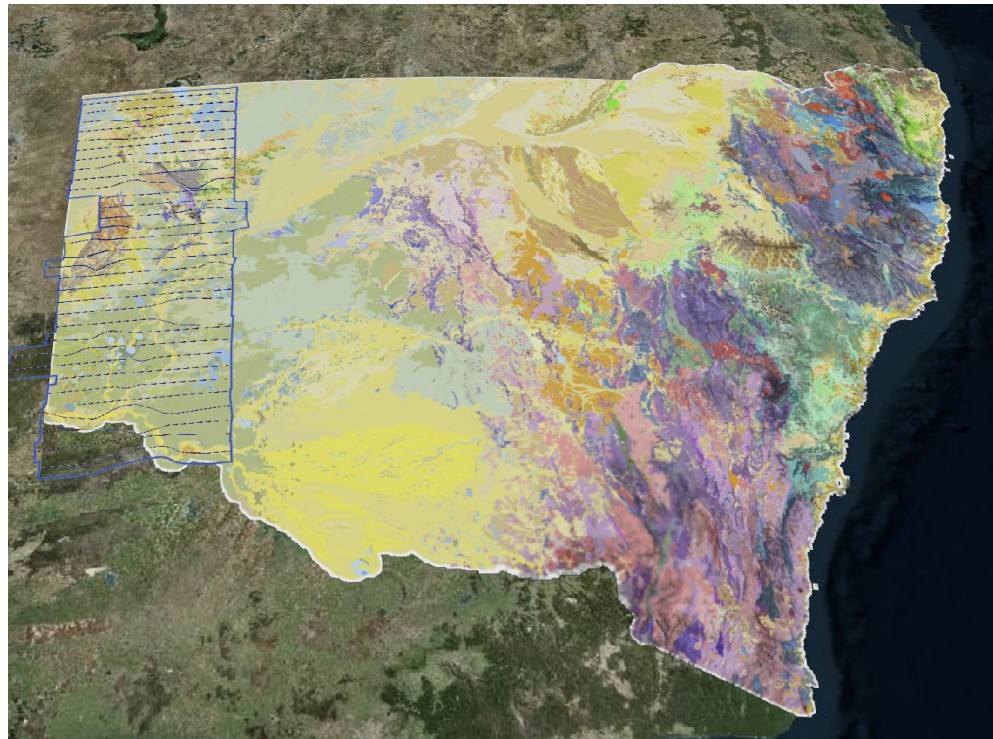
New datasets and functionality

New datasets

- AusAEM 3D curtains
- Updated simplified geology layer and view
 - based on NSW Seamless Geology
- Mineral Exploration Highlights

New functionality

- Search bar centred in map view
 - added search for lot numbers and LGAs
- New report windows for fossil and title data
 - can export single title shape areas



Title / application report

Application [Spatial data](#)
ELA6525

Application type
ELA

Application number
6525

Applicant
EVANDALE MINERALS PTY LTD

Application date
19/08/2022

Groups
GROUP1,

Minerals
Antimony, Arsenic, Bismuth, Cadmium, Caesium, Chromite, Cobalt, Copper, Galena, Germanium, Gold, Indium, Iron Minerals, Lead, Lithium, Manganese, Mercury, Molybdenite, Nickel, Niobium, Platinum, Platinum Group Minerals, Rare Earth Minerals, Rubidium, Scandium And Its Ores, Selenium, Silver, Sulphur, Tantalum, Tin, Tungsten And Its Ores, Vanadium, Zinc, Zirconia

NSW geology phone map updates

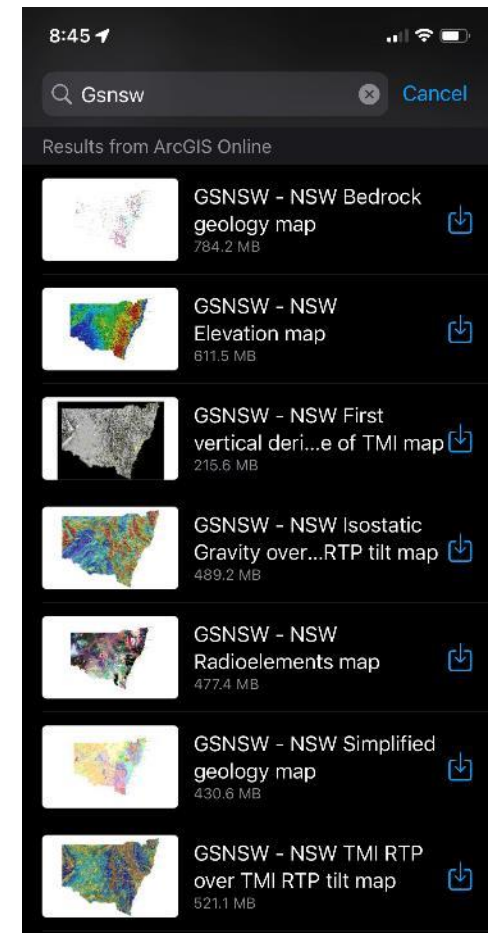
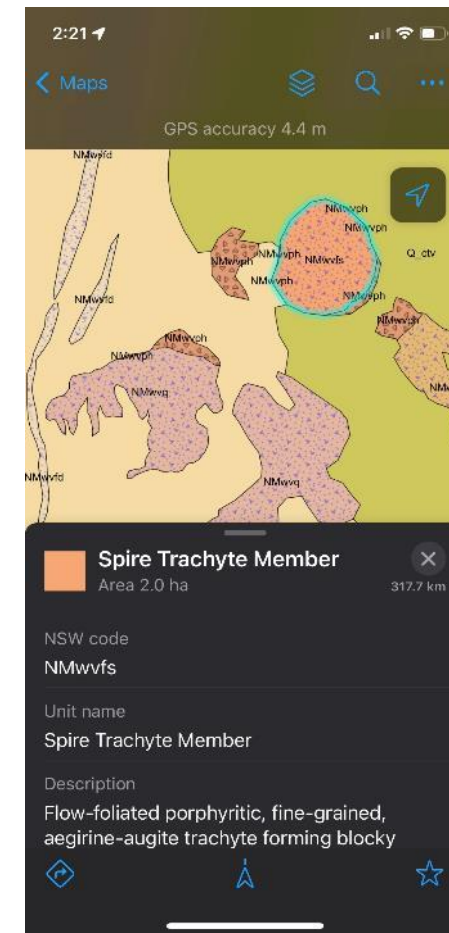
NSW geology phone maps updates

Main features

- Free download to your mobile device
- No mobile reception required
- Interactive geology maps
- Geophysical images

NEW!

- NSW Seamless Geology v2.2
- ArcGIS Field Maps app



MinView demo

<https://minview.geoscience.nsw.gov.au/>