

# SMEDG Showcase 2022

---

**Grant McLatchie**  
Executive Director Geological Survey of NSW

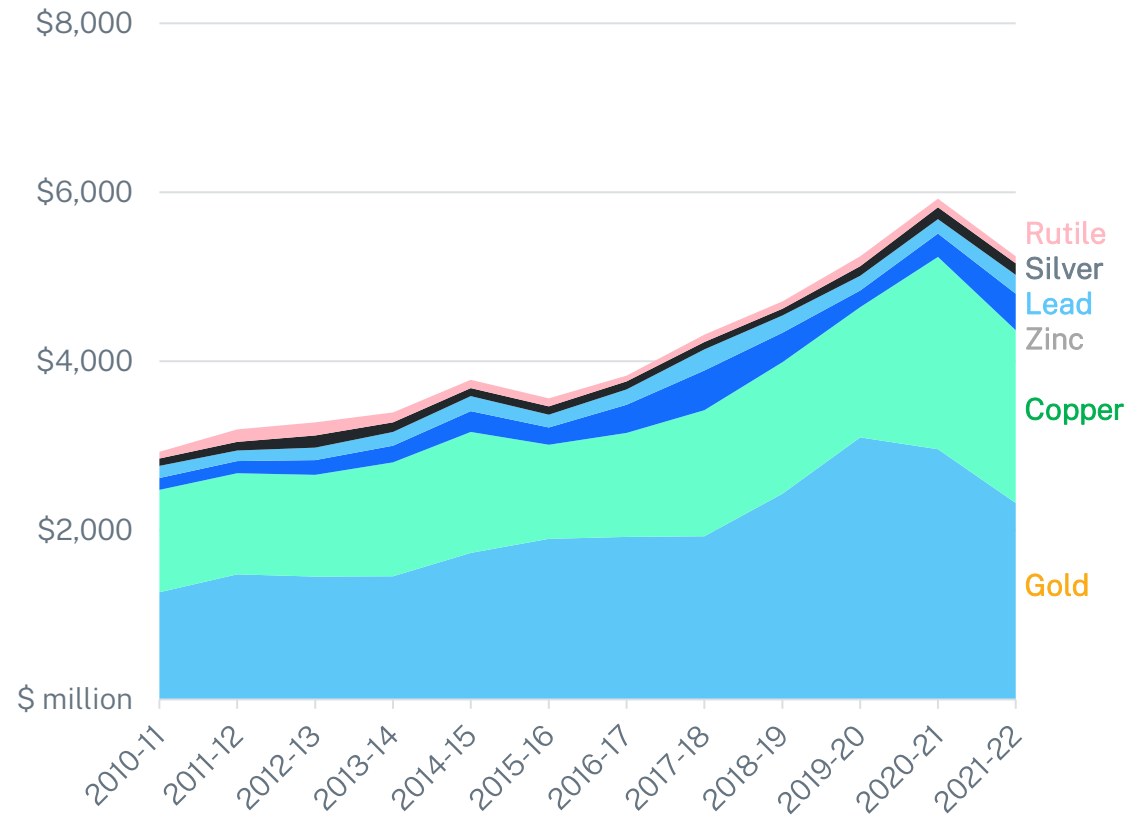
---

24 November 2022

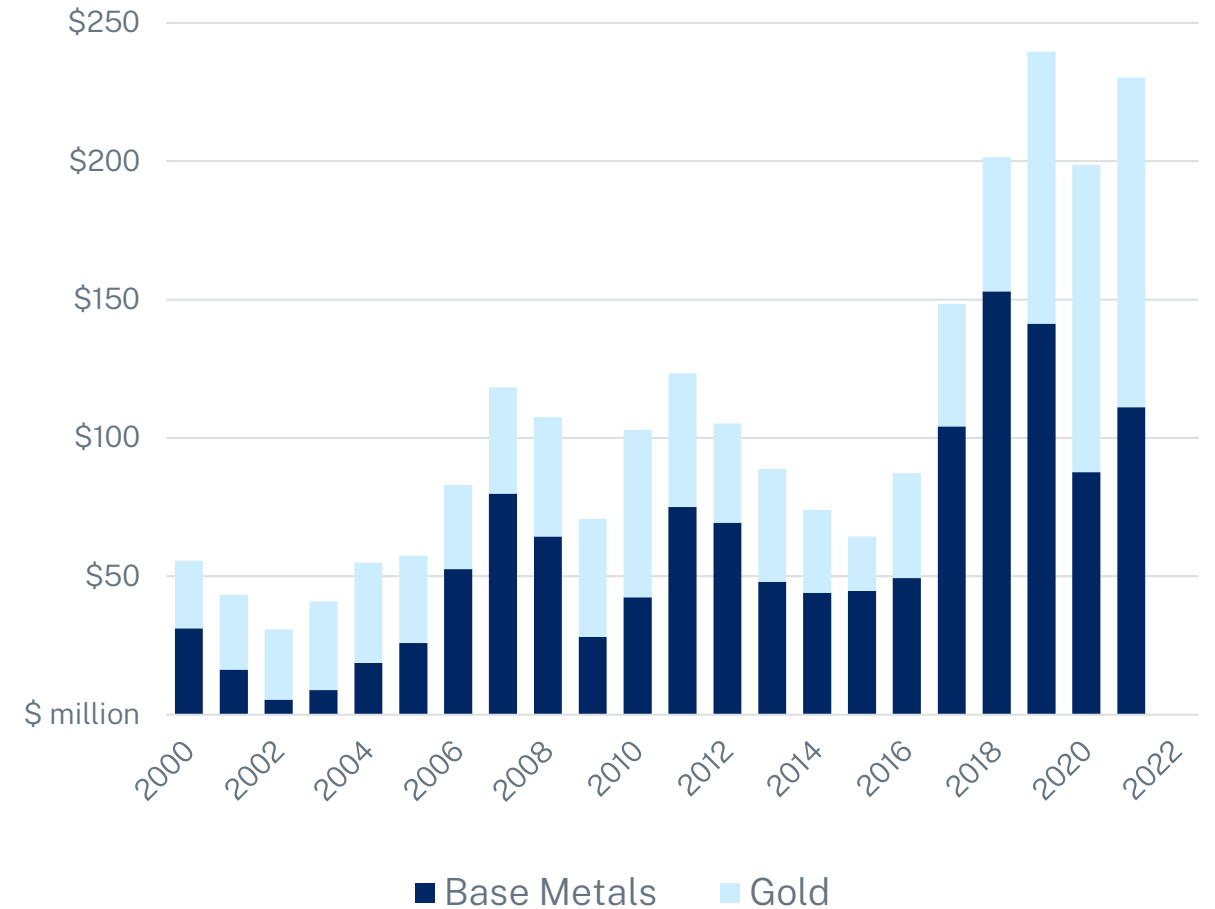


# Exploration & Mining Trends in NSW

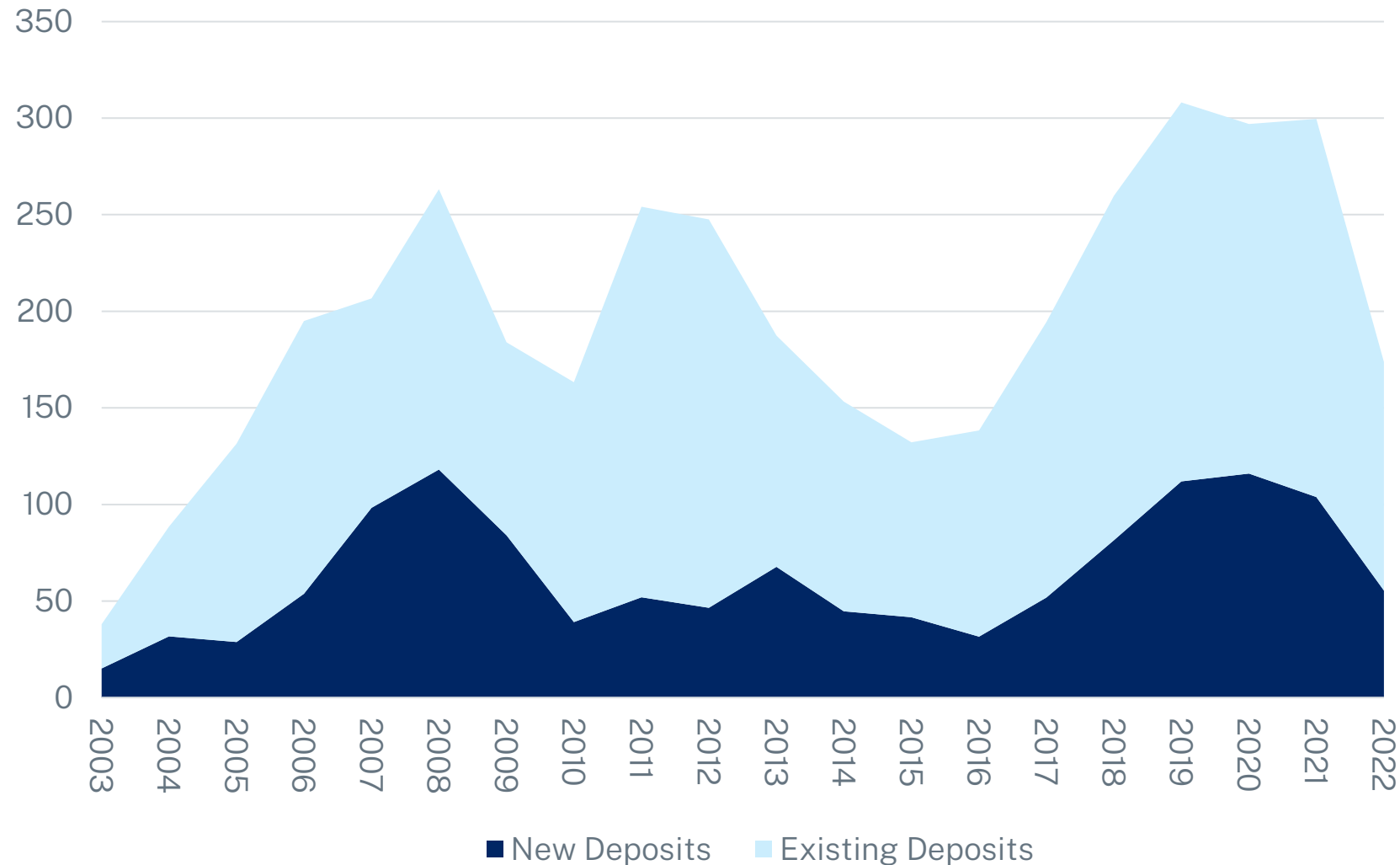
Value of NSW non-coal production (top 6 exc. coal)



Exploration Expenditure



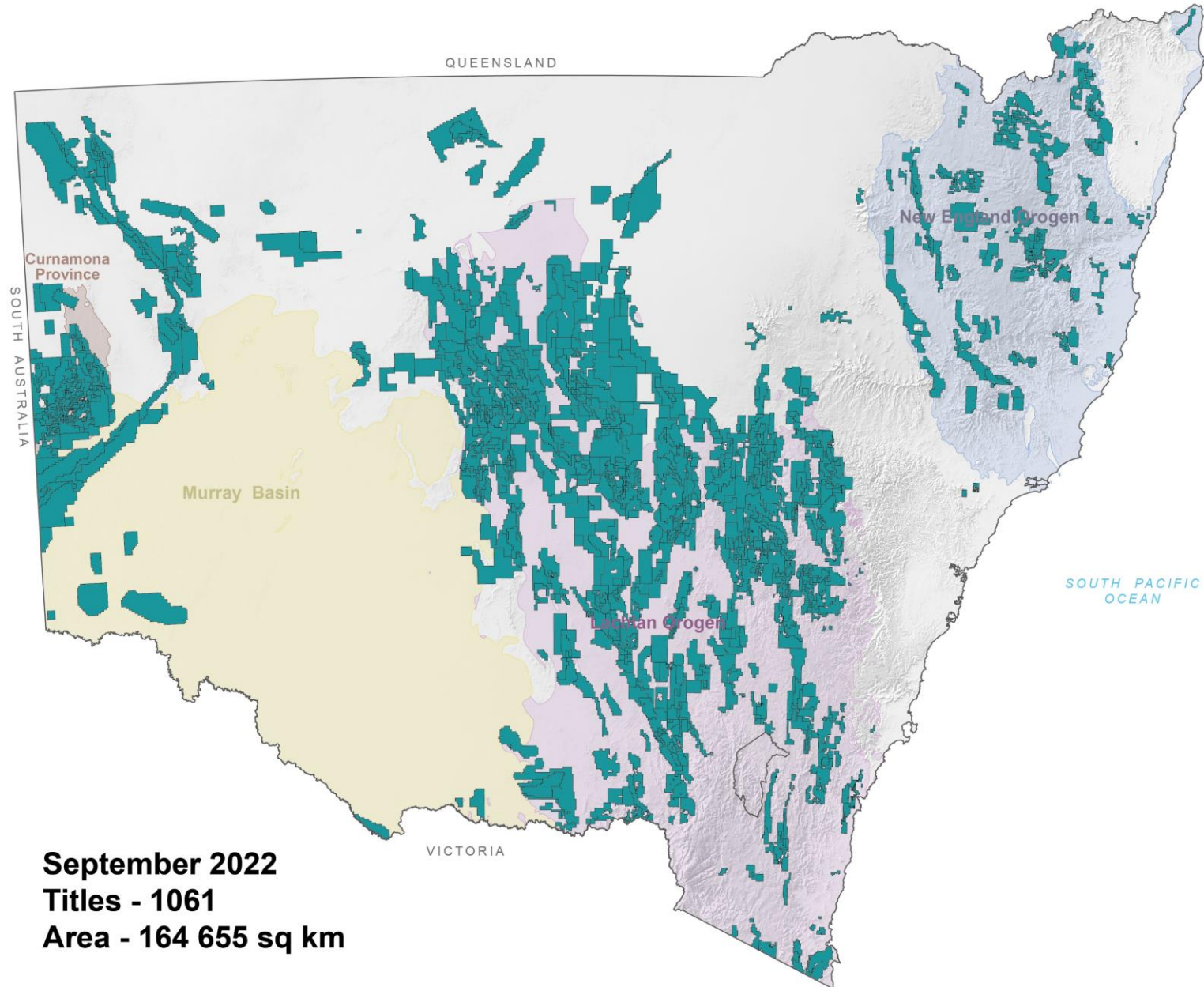
## AUD M NSW Exploration Expenditure – Deposit Type



Focus on existing deposits but general growth trend since 2017 in new deposits

2022	For every \$1 spent on New Deposits = \$x Existing
SA	1.14
NT	1.75
QLD	2.03
NSW	2.13
WA	2.44
VIC	3.85
TAS	9.00





**September 2022**  
**Titles - 1061**  
**Area - 164 655 sq km**

# NSW driving new growth and investment



## New Frontiers Exploration Program



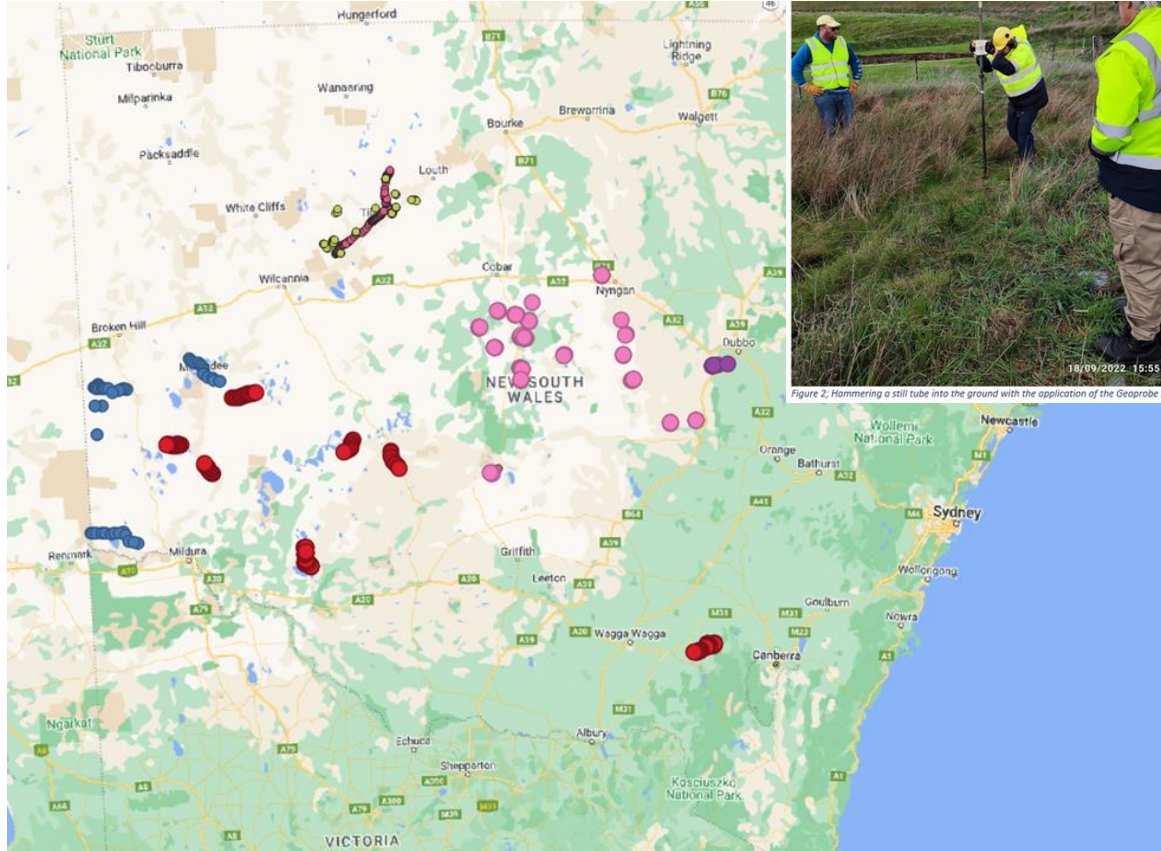
Market signalling to  
investors

Support for early stage  
exploration

Support for early-mid  
stage and advanced  
projects

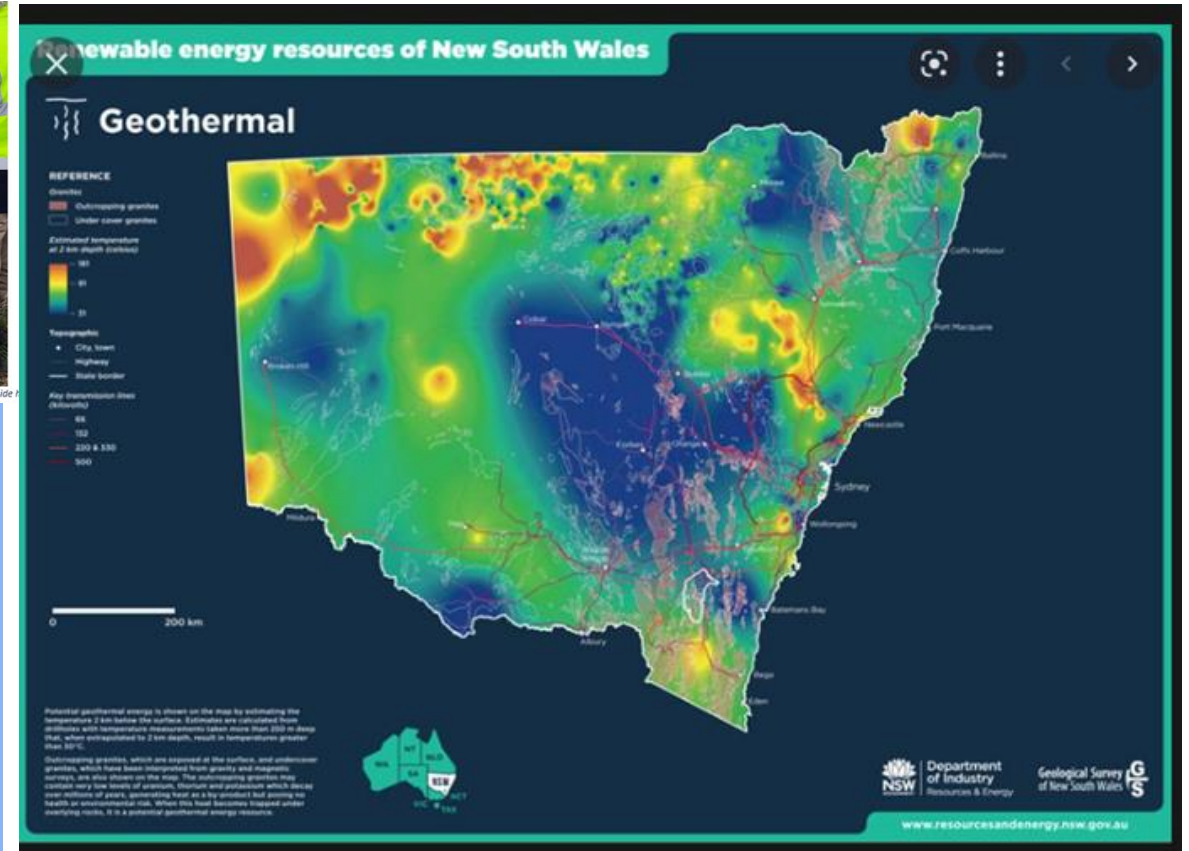


# Geologic Hydrogen (He)



Proposed locations of the sampling sites

# Geothermal Prospectivity



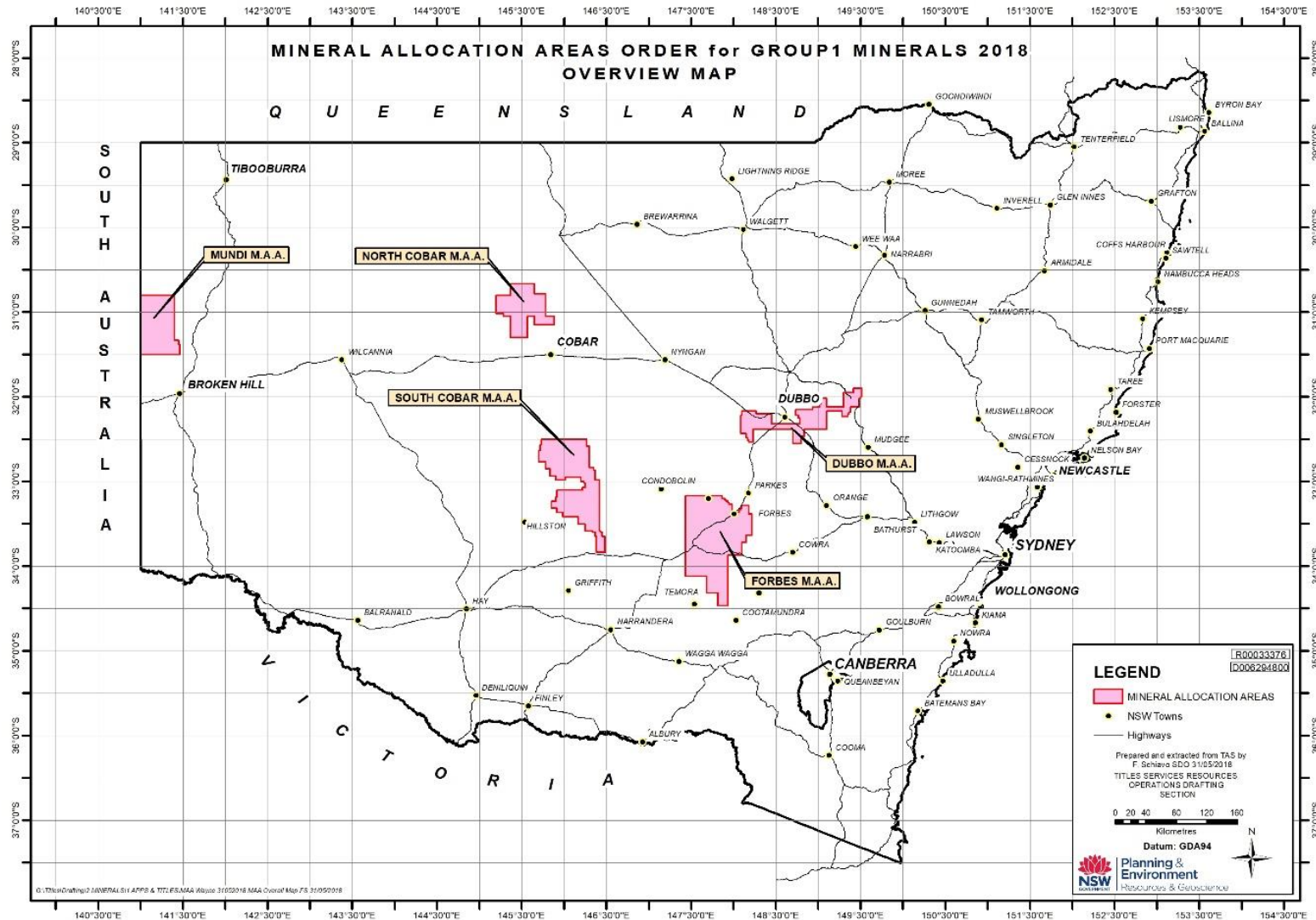
Rebuilding the geothermal model for the state



# Mine Reuse

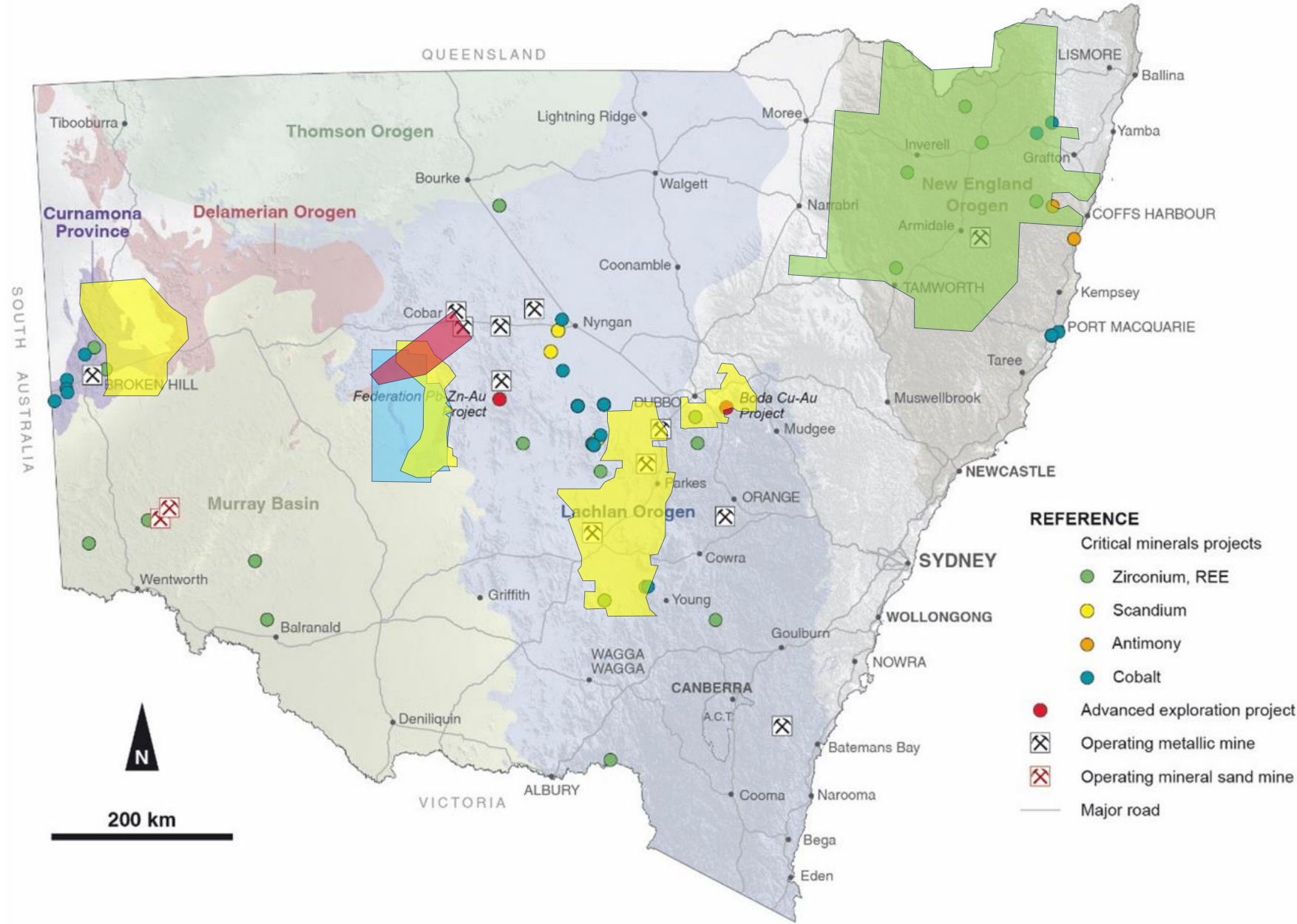


# MinEx CRC NDI





- AEM
- AMR
- SEISMIC
- GRAVITY



- REFERENCE**
- Critical minerals projects
    - Zirconium, REE
    - Scandium
    - Antimony
    - Cobalt
  - Advanced exploration project
  - Operating metallic mine
  - Operating mineral sand mine
  - Major road



