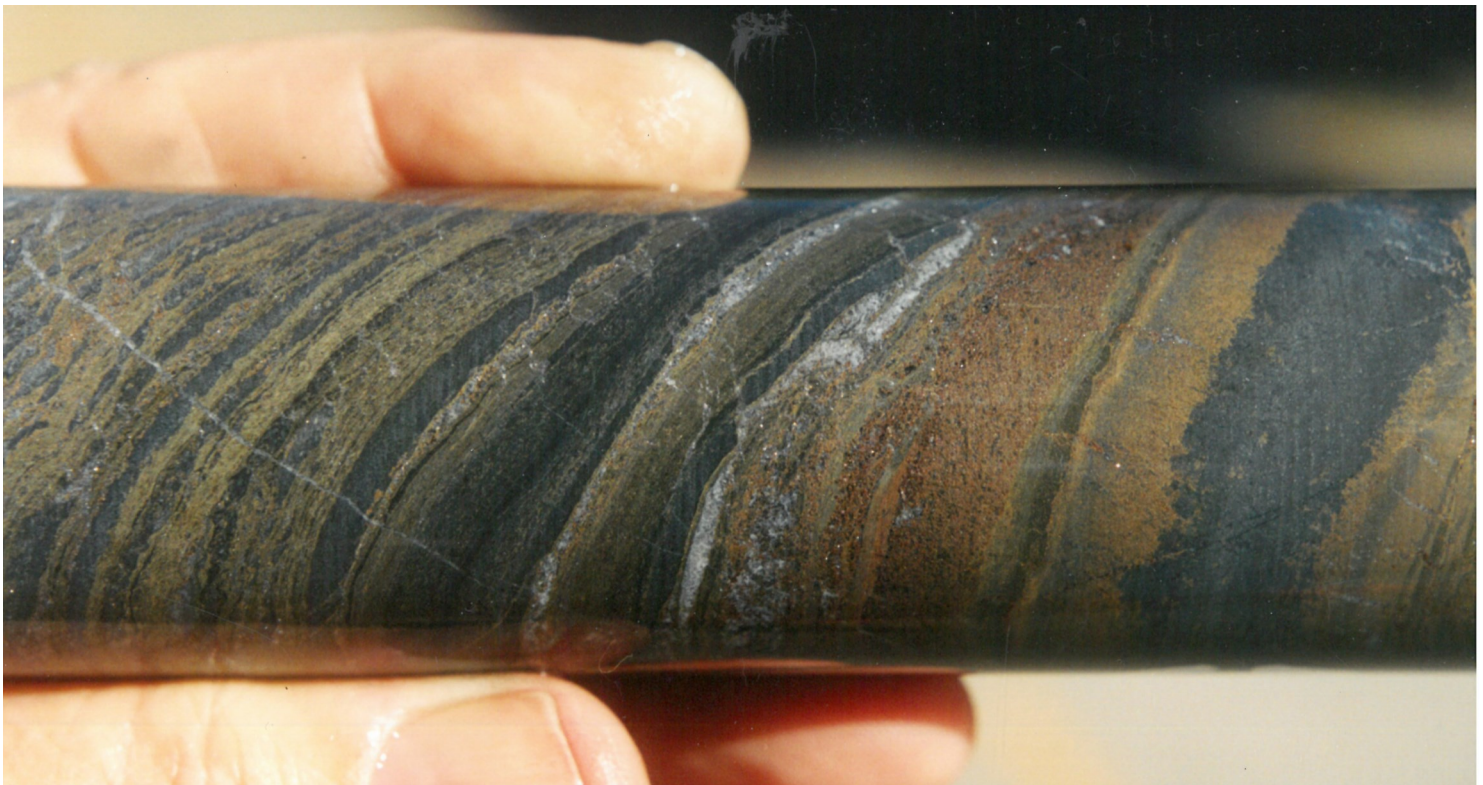


**DRILLCORE SAMPLES, GEORGE FISHER MINE, JULY 2001**  
**Scans of prints; original images taken by G M Derrick (SLR)**

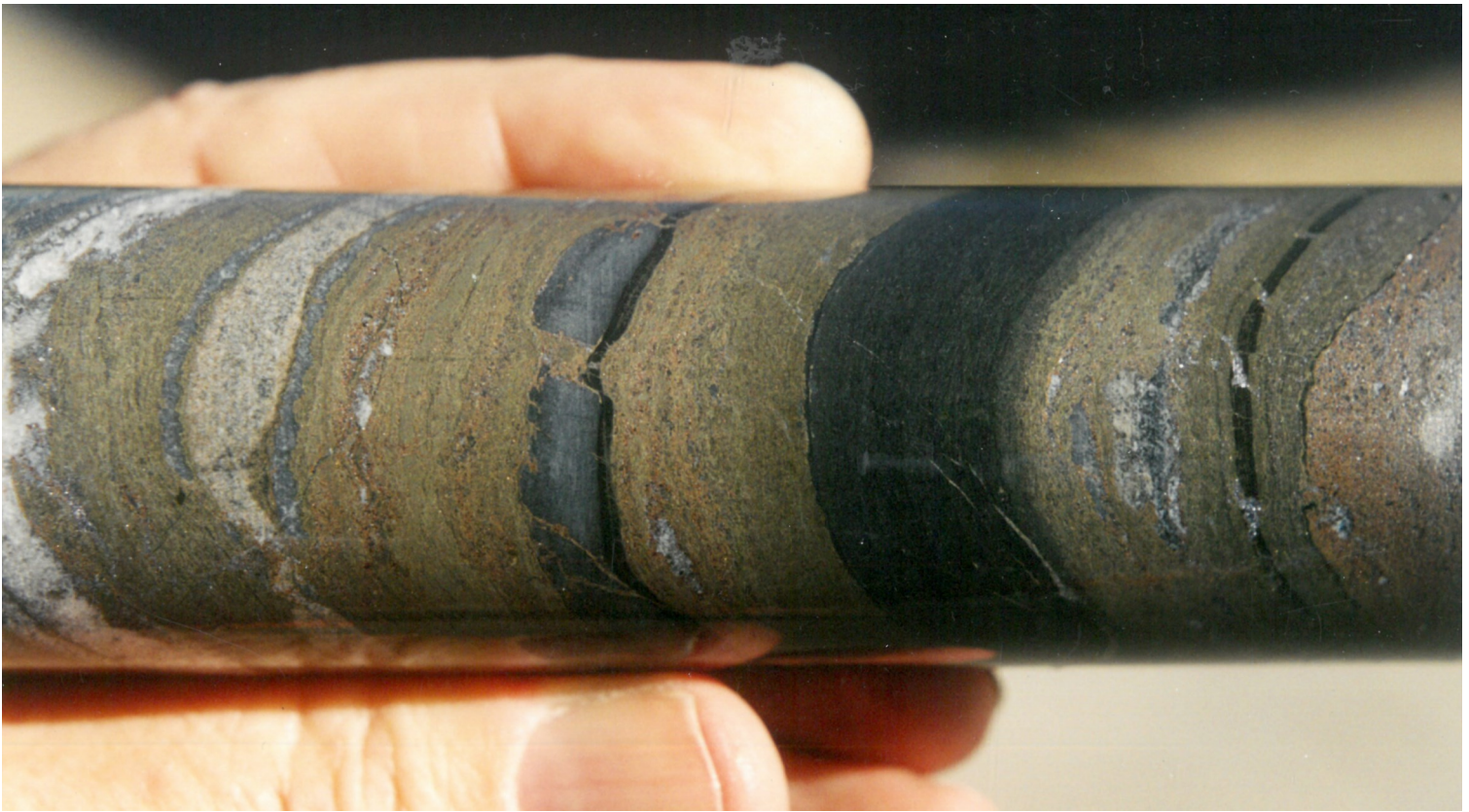


**GF2001-1:** Part of C orebody—top to left. Folded and brecciated banded pyritic siltstone with red-brown sphalerite. Many mobilised sulphide-shale breccia zones with fold remnants



**GF2001-2:** E orebody—banded pyritic siltstone with sphalerite-rich zones. Some corrosion/replacement of siltstone by sphalerite at right. Possible TMB at centre of sample





**GF2001-3:** Base of E orebody—hole drilled from E to A orebody. (A is hanging wall area; E is towards footwall). Dolomitic silt and pyritic silt with abundant red-bn sphalerite and possibly lighter coloured sph. Pull apart siltstone infilled with sphalerite



**GF2001-4:** E orebody— pyritic dolomitic siltstone with sphalerite to right, and possible tuff marker bed ??



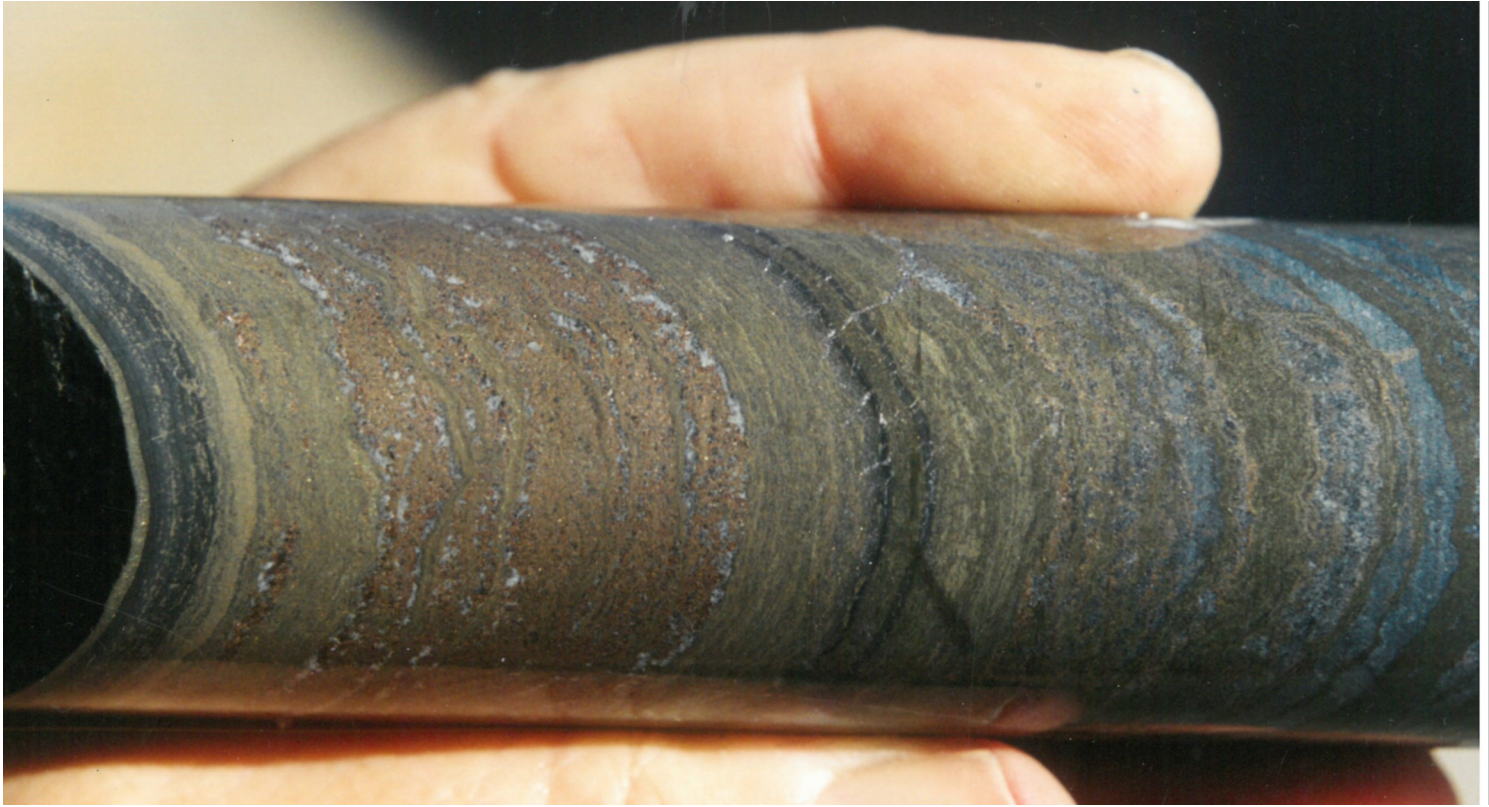


**GF2001-5:** Massive banded sulphide, E orebody—sphalerite and galena, plus late ?calcite vein; uphole to left. Getting close to D orebody (i.e. towards HW)



**GF2001-6:** Near top of E orebody. Rhythmically banded cyclic sedimentation, top to left (towards HW). Cycles are from thicker-bedded basal grey dolomitic siltstone, then lighter pyritic carbonate zone then thin dark shale





**GF2001-7:** Onset of D orebody, top to left. Banded pyritic siltstone, minor grey dolomitic siltstone, red-bn coarse-grained sphalerite. Minor cross-cutting tension gashes.



**GF2001-8:** D orebody, top to left., Massive sulphide breccias, crudely layered—galena and sphalerite, and late ?calcite veining. Breccia contains fragments of bedded siltstone



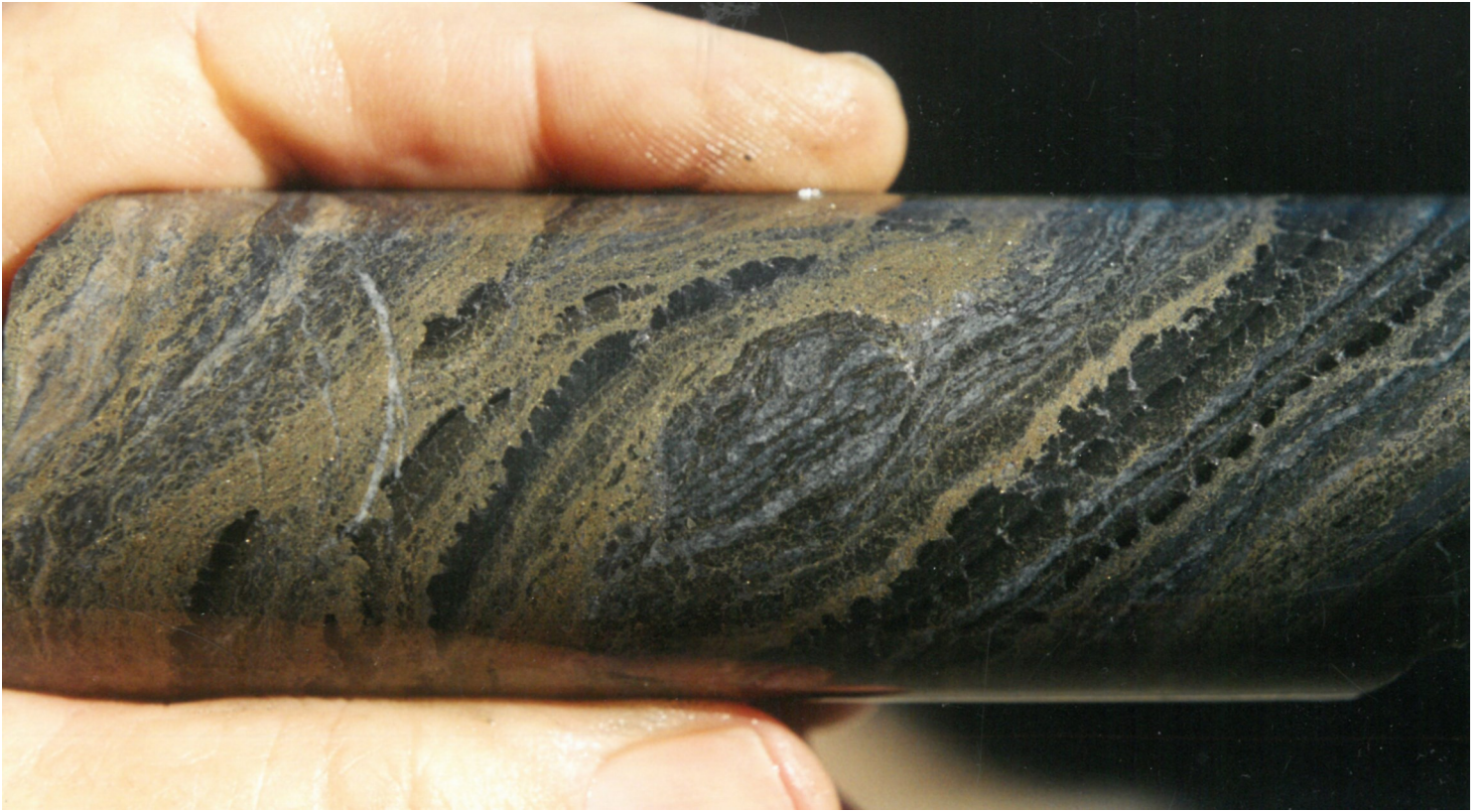


**GF2001-9:** D orebody, top to left; banded pyritic siltstone with sphalerite bands. Some fold crenulation—Z-type fold with shearing in fold axial zone, with coarser sulphide breccia.



**GF2001-10:** D orebody, top left. Crudely bedded sulphide breccia cross-cutting and replacing dolomitic siltstone to right. Breccia contains dismembered remnants of folded grey siltstone



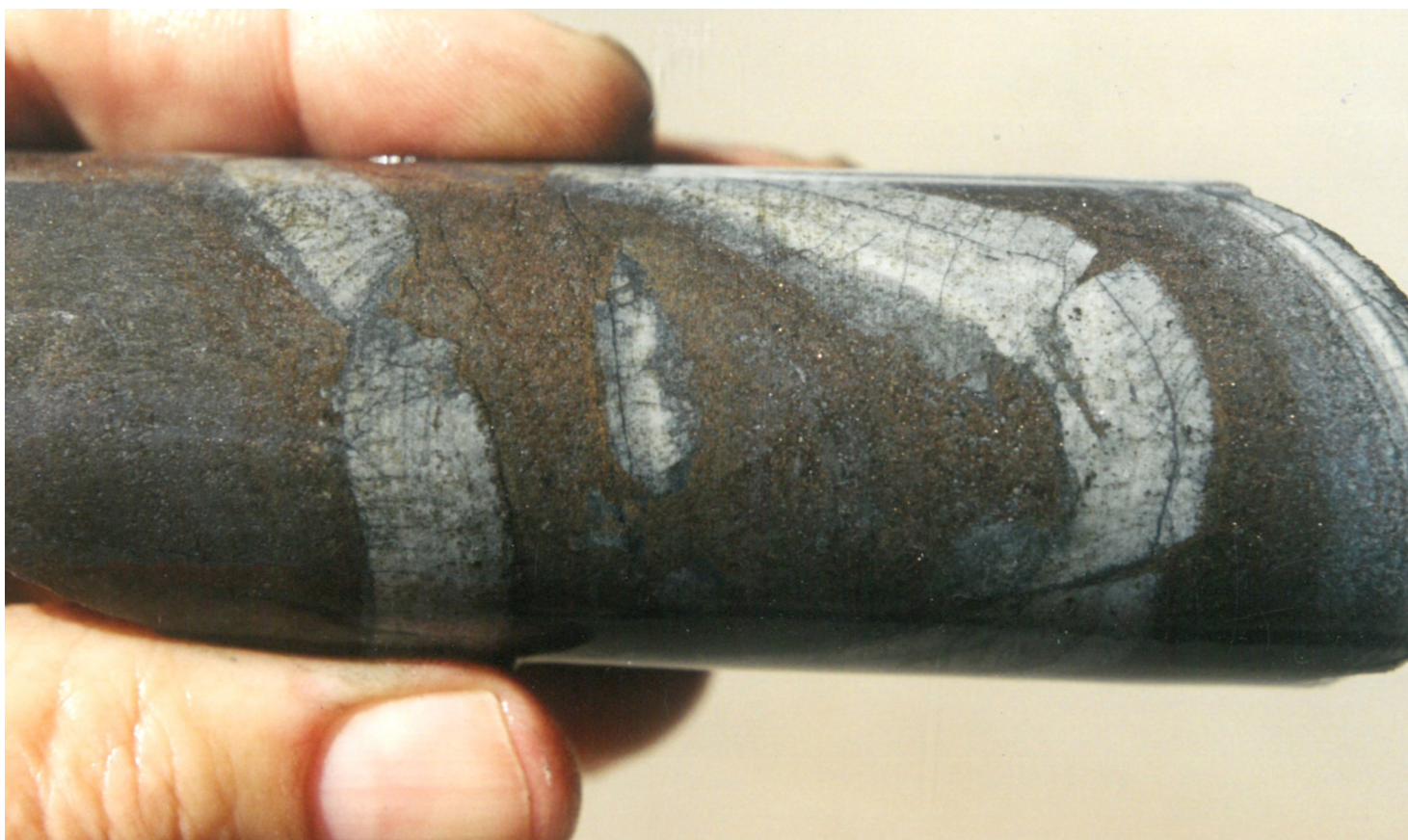


**GF2001-11:** Top of D orebody, top to left. Pyritic and dolomitic siltstone showing extensive corrosion of sediment by pyrite. Replacement zones facilitated by extensional cross fracturing ??.



**GF2001-12:** Top of C orebody, top to left, dip steep to west. Barren dolomitic siltstone with notable stylolites, minor pyrite. Part of the Urquhart shale.





**GF2001-13:** A orebody, top to left. Coarse-grained sphalerite cross-cutting grey-white ?calcitic /dolomitic siltstone; some white siltstone fragments in sulphide breccia.